



[Go to Product page](#)

Datasheet for ABIN653082  
**anti-CDC20 antibody (N-Term)**

3 Images

Overview

Quantity:	400 µL
Target:	CDC20
Binding Specificity:	AA 57-84, N-Term
Reactivity:	Human
Host:	Rabbit
Clonality:	Polyclonal
Conjugate:	This CDC20 antibody is un-conjugated
Application:	Western Blotting (WB), Flow Cytometry (FACS)

Product Details

Immunogen:	This CDC20 antibody is generated from rabbits immunized with a KLH conjugated synthetic peptide between 57-84 amino acids from the N-terminal region of human CDC20.
Clone:	RB23122
Isotype:	Ig Fraction
Predicted Reactivity:	Pig
Purification:	This antibody is purified through a protein A column, followed by peptide affinity purification.

Target Details

Target:	CDC20
Alternative Name:	CDC20 ( <a href="#">CDC20 Products</a> )

## Target Details

---

Background:	CDC20 is an activating regulatory factor for the APC/C (anaphase promoting complex/cyclosome). It activates the ubiquitination activity of the APC/C. CDC20 confers a strict destruction-box (D-box) dependence on APC. Levels of CDC20, as well as its binding to APC, peak in mitosis and decrease drastically at early G1.
Molecular Weight:	54723
Gene ID:	991
NCBI Accession:	<a href="#">NP_001246</a>
UniProt:	<a href="#">Q12834</a>

## Application Details

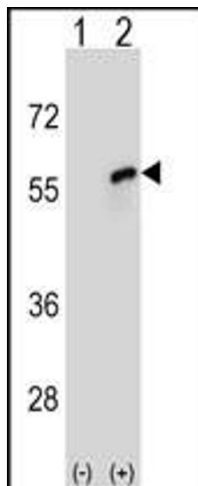
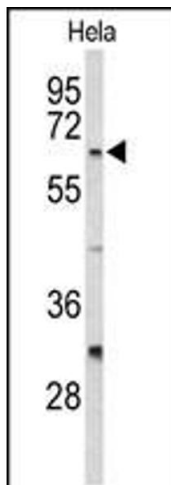
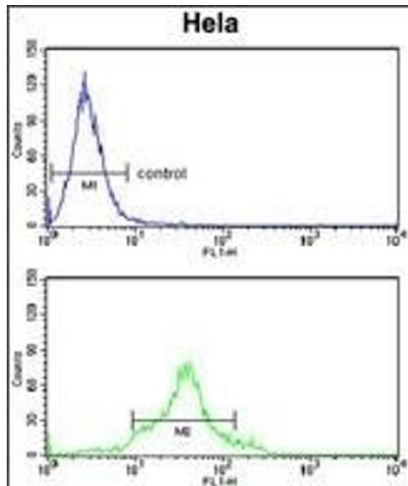
---

Application Notes:	WB: 1:1000. WB: 1:1000. FC: 1:10~50
Restrictions:	For Research Use only

## Handling

---

Format:	Liquid
Buffer:	Purified polyclonal antibody supplied in PBS with 0.09 % (W/V) sodium azide.
Preservative:	Sodium azide
Precaution of Use:	This product contains Sodium azide: a POISONOUS AND HAZARDOUS SUBSTANCE which should be handled by trained staff only.
Storage:	4 °C,-20 °C
Storage Comment:	Maintain refrigerated at 2-8 °C for up to 6 months. For long term storage store at -20 °C in small aliquots to prevent freeze-thaw cycles.
Expiry Date:	6 months



### Flow Cytometry

**Image 1.** CDC20 Antibody (N-term) (ABIN653082 and ABIN2842679) flow cytometry analysis of HeLa cells (bottom histogram) compared to a negative control cell (top histogram). FITC-conjugated goat-anti-rabbit secondary antibodies were used for the analysis.

### Western Blotting

**Image 2.** Western blot analysis of CDC20 Antibody (N-term) (ABIN653082 and ABIN2842679) in HeLa cell line lysates (35 µg/lane). CDC20 (arrow) was detected using the purified Pab.

### Western Blotting

**Image 3.** Western blot analysis of CDC20 (arrow) using rabbit polyclonal CDC20 Antibody (N-term) (ABIN653082 and ABIN2842679). 293 cell lysates (2 µg/lane) either nontransfected (Lane 1) or transiently transfected (Lane 2) with the CDC20 gene.