

Datasheet for ABIN653085
anti-C19orf50 antibody (AA 59-85)[Go to Product page](#)

3 Images

Overview

Quantity:	400 µL
Target:	C19orf50
Binding Specificity:	AA 59-85
Reactivity:	Human
Host:	Rabbit
Clonality:	Polyclonal
Conjugate:	This C19orf50 antibody is un-conjugated
Application:	Western Blotting (WB), Immunohistochemistry (Paraffin-embedded Sections) (IHC (p))

Product Details

Immunogen:	This C19orf50 antibody is generated from rabbits immunized with a KLH conjugated synthetic peptide between 59-85 amino acids from the Central region of human C19orf50.
Clone:	RB26185
Isotype:	Ig Fraction
Predicted Reactivity:	B, M, Rat
Purification:	This antibody is purified through a protein A column, followed by peptide affinity purification.

Target Details

Target:	C19orf50
Alternative Name:	C19orf50 (C19orf50 Products)

Target Details

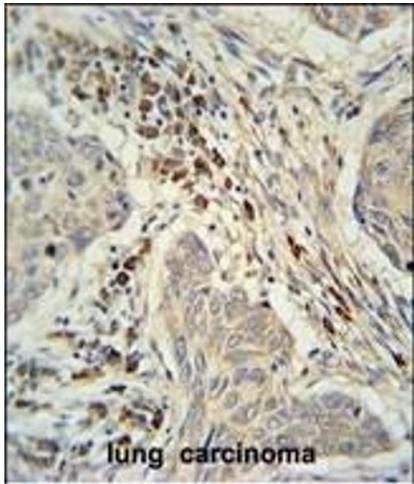
Background:	The function of the C19orf50 protein has not yet been determined.
Molecular Weight:	19668
Gene ID:	79036
NCBI Accession:	NP_001165419 , NP_001165420 , NP_076974
UniProt:	Q9BQD3

Application Details

Application Notes:	WB: 1:1000. WB: 1:1000. IHC-P: 1:50~100
Restrictions:	For Research Use only

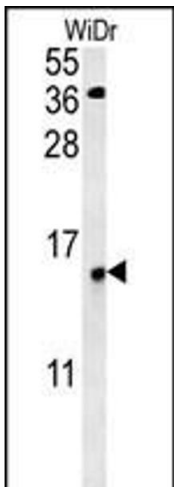
Handling

Format:	Liquid
Buffer:	Purified polyclonal antibody supplied in PBS with 0.09 % (W/V) sodium azide.
Preservative:	Sodium azide
Precaution of Use:	This product contains Sodium azide: a POISONOUS AND HAZARDOUS SUBSTANCE which should be handled by trained staff only.
Storage:	4 °C,-20 °C
Storage Comment:	Maintain refrigerated at 2-8 °C for up to 6 months. For long term storage store at -20 °C in small aliquots to prevent freeze-thaw cycles.
Expiry Date:	6 months



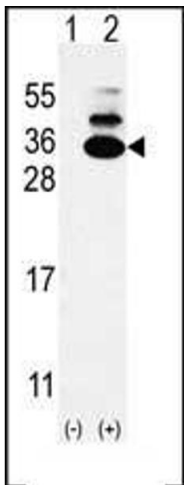
Immunohistochemistry (Paraffin-embedded Sections)

Image 1. C19orf50 Antibody (Center) (ABIN653085 and ABIN2842681) immunohistochemistry analysis in formalin fixed and paraffin embedded human lung carcinoma followed by peroxidase conjugation of the secondary antibody and DAB staining. This data demonstrates the use of the C19orf50 Antibody (Center) for immunohistochemistry. Clinical relevance has not been evaluated.



Western Blotting

Image 2. C19orf50 Antibody (Center) (ABIN653085 and ABIN2842681) western blot analysis in WiDr cell line lysates (35 µg/lane). This demonstrates the C19orf50 antibody detected the C19orf50 protein (arrow).



Western Blotting

Image 3. Western blot analysis of C19orf50 (arrow) using rabbit polyclonal C19orf50 Antibody (Center) (ABIN653085 and ABIN2842681). 293 cell lysates (2 µg/lane) either nontransfected (Lane 1) or transiently transfected (Lane 2) with the C19orf50 gene.