

Datasheet for ABIN653096

anti-PEX16 antibody (AA 247-275)

3 Images

[Go to Product page](#)

Overview

Quantity:	400 µL
Target:	PEX16
Binding Specificity:	AA 247-275
Reactivity:	Human
Host:	Rabbit
Clonality:	Polyclonal
Conjugate:	This PEX16 antibody is un-conjugated
Application:	Western Blotting (WB), Immunohistochemistry (Paraffin-embedded Sections) (IHC (p))

Product Details

Immunogen:	This PEX16 antibody is generated from rabbits immunized with a KLH conjugated synthetic peptide between 247-275 amino acids from the Central region of human PEX16.
Clone:	RB23218
Isotype:	Ig Fraction
Purification:	This antibody is purified through a protein A column, followed by peptide affinity purification.

Target Details

Target:	PEX16
Alternative Name:	PEX16 (PEX16 Products)
Background:	PEX16 is required for peroxisome membrane biogenesis. It may play a role in early stages of

Target Details

peroxisome assembly and can recruit other peroxisomal proteins, such as PEX3 and PMP34, to de novo peroxisomes derived from the endoplasmic reticulum (ER). It may function as receptor for PEX3.

Molecular Weight: 38629

Gene ID: 9409

NCBI Accession: [NP_004804](#), [NP_476515](#)

UniProt: [Q9Y5Y5](#)

Application Details

Application Notes: WB: 1:1000. WB: 1:1000. IHC-P: 1:50~100

Restrictions: For Research Use only

Handling

Format: Liquid

Buffer: Purified polyclonal antibody supplied in PBS with 0.09 % (W/V) sodium azide.

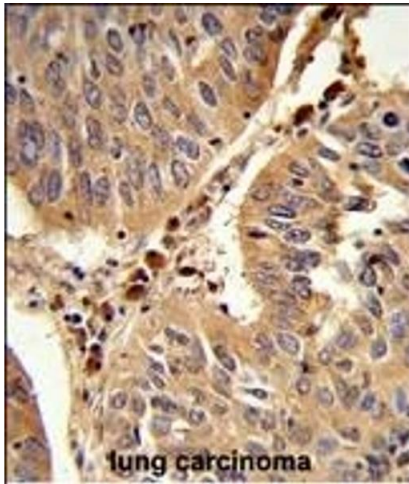
Preservative: Sodium azide

Precaution of Use: This product contains Sodium azide: a POISONOUS AND HAZARDOUS SUBSTANCE which should be handled by trained staff only.

Storage: 4 °C, -20 °C

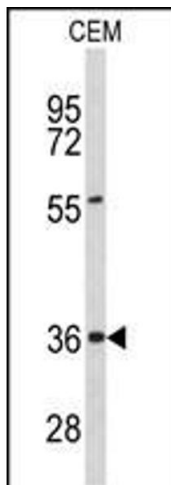
Storage Comment: Maintain refrigerated at 2-8 °C for up to 6 months. For long term storage store at -20 °C in small aliquots to prevent freeze-thaw cycles.

Expiry Date: 6 months



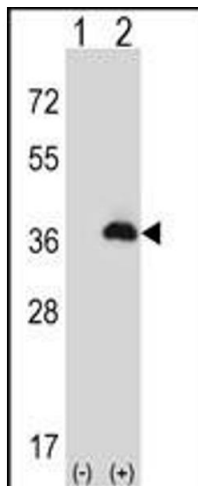
Immunohistochemistry (Paraffin-embedded Sections)

Image 1. Formalin-fixed and paraffin-embedded human lung carcinoma reacted with PEX16 Antibody (Center), which was peroxidase-conjugated to the secondary antibody, followed by DAB staining. This data demonstrates the use of this antibody for immunohistochemistry, clinical relevance has not been evaluated.



Western Blotting

Image 2. Western blot analysis of PEX16 Antibody (Center) (ABIN653096 and ABIN2842688) in CEM cell line lysates (35 µg/lane). PEX16 (arrow) was detected using the purified Pab.



Western Blotting

Image 3. Western blot analysis of PEX16 (arrow) using rabbit polyclonal PEX16 Antibody (Center) (ABIN653096 and ABIN2842688). 293 cell lysates (2 µg/lane) either nontransfected (Lane 1) or transiently transfected (Lane 2) with the PEX16 gene.