

Datasheet for ABIN653100  
**anti-COX6A1 antibody (AA 50-78)**[Go to Product page](#)

## 4 Images

## Overview

Quantity:	400 µL
Target:	COX6A1
Binding Specificity:	AA 50-78
Reactivity:	Human
Host:	Rabbit
Clonality:	Polyclonal
Conjugate:	This COX6A1 antibody is un-conjugated
Application:	Western Blotting (WB), Flow Cytometry (FACS), Immunohistochemistry (Paraffin-embedded Sections) (IHC (p))

## Product Details

Immunogen:	This COX6A1 antibody is generated from rabbits immunized with a KLH conjugated synthetic peptide between 50-78 amino acids from the Central region of human COX6A1.
Clone:	RB23259
Isotype:	Ig Fraction
Predicted Reactivity:	Rb
Purification:	This antibody is purified through a protein A column, followed by peptide affinity purification.

## Target Details

Target:	COX6A1
---------	--------

## Target Details

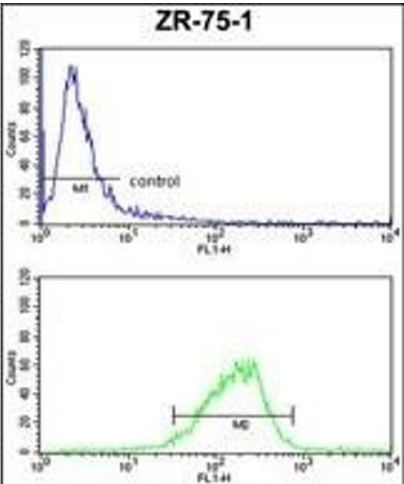
Alternative Name:	COX6A1 ( <a href="#">COX6A1 Products</a> )
Background:	This protein is one of the nuclear-coded polypeptide chains of cytochrome c oxidase, the terminal oxidase in mitochondrial electron transport.
Molecular Weight:	12155
Gene ID:	1337
NCBI Accession:	<a href="#">NP_004364</a>
UniProt:	<a href="#">P12074</a>

## Application Details

Application Notes:	WB: 1:1000. WB: 1:1000. IHC-P: 1:50~100. FC: 1:10~50
Restrictions:	For Research Use only

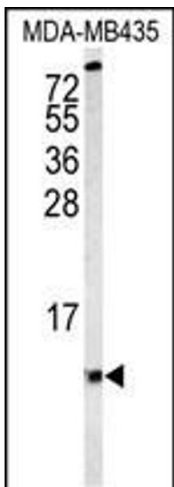
## Handling

Format:	Liquid
Buffer:	Purified polyclonal antibody supplied in PBS with 0.09 % (W/V) sodium azide.
Preservative:	Sodium azide
Precaution of Use:	This product contains Sodium azide: a POISONOUS AND HAZARDOUS SUBSTANCE which should be handled by trained staff only.
Storage:	4 °C,-20 °C
Storage Comment:	Maintain refrigerated at 2-8 °C for up to 6 months. For long term storage store at -20 °C in small aliquots to prevent freeze-thaw cycles.
Expiry Date:	6 months



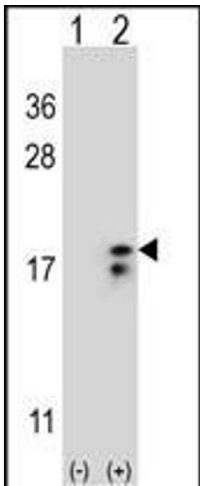
### Flow Cytometry

**Image 1.** COX6A1 Antibody (Center) (ABIN653100 and ABIN2842691) FC analysis of ZR-75-1 cells (bottom histogram) compared to a negative control cell (top histogram). FITC-conjugated goat-anti-rabbit secondary antibodies were used for the analysis.



### Western Blotting

**Image 2.** Western blot analysis of COX6A1 Antibody (Center) (ABIN653100 and ABIN2842691) in MDA-M cell line lysates (35 µg/lane). COX6A1 (arrow) was detected using the purified Pab.



### Western Blotting

**Image 3.** Western blot analysis of COX6A1 (arrow) using rabbit polyclonal COX6A1 Antibody (Center) (ABIN653100 and ABIN2842691). 293 cell lysates (2 µg/lane) either nontransfected (Lane 1) or transiently transfected (Lane 2) with the COX6A1 gene.

Please check the [product details page](#) for more images. Overall 4 images are available for ABIN653100.