

Datasheet for ABIN653102
anti-CES5A antibody (AA 244-270)[Go to Product page](#)

2 Images

Overview

Quantity:	400 µL
Target:	CES5A
Binding Specificity:	AA 244-270
Reactivity:	Human
Host:	Rabbit
Clonality:	Polyclonal
Conjugate:	This CES5A antibody is un-conjugated
Application:	Western Blotting (WB), Immunohistochemistry (Paraffin-embedded Sections) (IHC (p))

Product Details

Immunogen:	This CES7 antibody is generated from rabbits immunized with a KLH conjugated synthetic peptide between 244-270 amino acids from the Central region of human CES7.
Clone:	RB23272
Isotype:	Ig Fraction
Purification:	This antibody is purified through a protein A column, followed by peptide affinity purification.

Target Details

Target:	CES5A
Alternative Name:	CES7 (CES5A Products)
Background:	CES7 is involved in the detoxification of xenobiotics and in the activation of ester and amide

Target Details

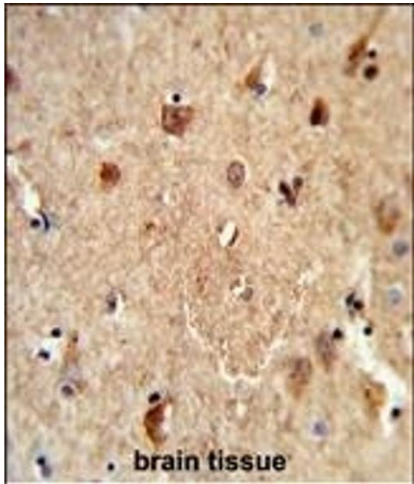
	prodrugs (By similarity).
Molecular Weight:	63926
Gene ID:	221223
NCBI Accession:	NP_001137157 , NP_001177087 , NP_659461
UniProt:	Q6NT32

Application Details

Application Notes:	WB: 1:1000. IHC-P: 1:50~100
Restrictions:	For Research Use only

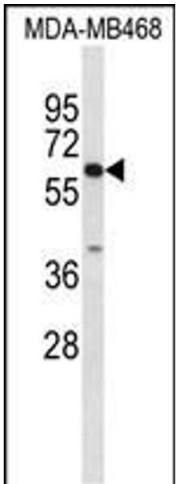
Handling

Format:	Liquid
Buffer:	Purified polyclonal antibody supplied in PBS with 0.09 % (W/V) sodium azide.
Preservative:	Sodium azide
Precaution of Use:	This product contains Sodium azide: a POISONOUS AND HAZARDOUS SUBSTANCE which should be handled by trained staff only.
Storage:	4 °C,-20 °C
Storage Comment:	Maintain refrigerated at 2-8 °C for up to 6 months. For long term storage store at -20 °C in small aliquots to prevent freeze-thaw cycles.
Expiry Date:	6 months



Immunohistochemistry (Paraffin-embedded Sections)

Image 1. Formalin-fixed and paraffin-embedded human brain tissue reacted with CES7 Antibody (Center), which was peroxidase-conjugated to the secondary antibody, followed by DAB staining. This data demonstrates the use of this antibody for immunohistochemistry, clinical relevance has not been evaluated.



Western Blotting

Image 2. Western blot analysis of CES7 Antibody (Center) (ABIN653102 and ABIN2842692) in MDA-M cell line lysates (35 µg/lane). CES7 (arrow) was detected using the purified Pab.