

Datasheet for ABIN653113
anti-CNDP1 antibody (C-Term)

3 Images

[Go to Product page](#)

Overview

| | |
|----------------------|-----------------------------------------------------------------------------------------------------------|
| Quantity: | 400 µL |
| Target: | CNDP1 |
| Binding Specificity: | AA 415-443, C-Term |
| Reactivity: | Human |
| Host: | Rabbit |
| Clonality: | Polyclonal |
| Conjugate: | This CNDP1 antibody is un-conjugated |
| Application: | Western Blotting (WB), Flow Cytometry (FACS), Immunohistochemistry (Paraffin-embedded Sections) (IHC (p)) |

Product Details

| | |
|---------------|------------------------------------------------------------------------------------------------------------------------------------------------------------------------|
| Immunogen: | This CNDP1 antibody is generated from rabbits immunized with a KLH conjugated synthetic peptide between 415-443 amino acids from the C-terminal region of human CNDP1. |
| Clone: | RB22141 |
| Isotype: | Ig Fraction |
| Purification: | This antibody is purified through a protein A column, followed by peptide affinity purification. |

Target Details

| | |
|-------------------|------------------------------------------|
| Target: | CNDP1 |
| Alternative Name: | CNDP1 (CNDP1 Products) |

Target Details

Background: CNDP1 encodes a member of the M20 metalloprotease family. The encoded protein is specifically expressed in the brain, is a homodimeric dipeptidase which was identified as human carnosinase. This protein contains trinucleotide (CTG) repeat length polymorphism in the coding region.

Molecular Weight: 56706

Gene ID: 84735

NCBI Accession: [NP_116038](#)

UniProt: [Q96KN2](#)

Application Details

Application Notes: WB: 1:1000. IHC-P: 1:50~100. FC: 1:10~50

Restrictions: For Research Use only

Handling

Format: Liquid

Buffer: Purified polyclonal antibody supplied in PBS with 0.09 % (W/V) sodium azide.

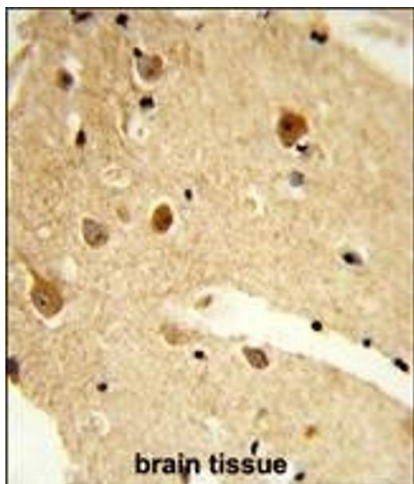
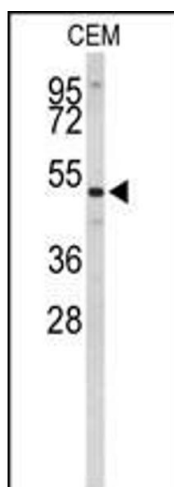
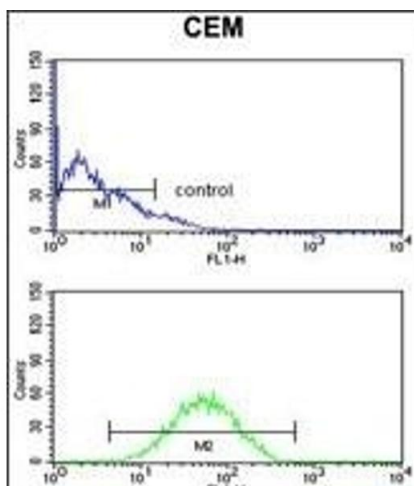
Preservative: Sodium azide

Precaution of Use: This product contains Sodium azide: a POISONOUS AND HAZARDOUS SUBSTANCE which should be handled by trained staff only.

Storage: 4 °C, -20 °C

Storage Comment: Maintain refrigerated at 2-8 °C for up to 6 months. For long term storage store at -20 °C in small aliquots to prevent freeze-thaw cycles.

Expiry Date: 6 months



Flow Cytometry

Image 1. CNDP1 Antibody (C-term) (ABIN653113 and ABIN2842697) flow cytometry analysis of CEM cells (bottom histogram) compared to a negative control cell (top histogram). FITC-conjugated goat-anti-rabbit secondary antibodies were used for the analysis.

Western Blotting

Image 2. Western blot analysis of CNDP1 Antibody (C-term) (ABIN653113 and ABIN2842697) in CEM cell line lysates (35 µg/lane). CNDP1 (arrow) was detected using the purified Pab.

Immunohistochemistry (Paraffin-embedded Sections)

Image 3. Formalin-fixed and paraffin-embedded human brain tissue reacted with CNDP1 Antibody (C-term), which was peroxidase-conjugated to the secondary antibody, followed by DAB staining. This data demonstrates the use of this antibody for immunohistochemistry, clinical relevance has not been evaluated.