

Datasheet for ABIN653117  
**anti-KIR3DL3 antibody (AA 132-158)**[Go to Product page](#)

## 3 Images

## Overview

Quantity:	400 µL
Target:	KIR3DL3
Binding Specificity:	AA 132-158
Reactivity:	Human
Host:	Rabbit
Clonality:	Polyclonal
Conjugate:	This KIR3DL3 antibody is un-conjugated
Application:	Western Blotting (WB), Flow Cytometry (FACS), Immunohistochemistry (Paraffin-embedded Sections) (IHC (p))

## Product Details

Immunogen:	This KIR3DL3 antibody is generated from rabbits immunized with a KLH conjugated synthetic peptide between 132-158 amino acids from the Central region of human KIR3DL3.
Clone:	RB22635
Isotype:	Ig Fraction
Purification:	This antibody is purified through a protein A column, followed by peptide affinity purification.

## Target Details

Target:	KIR3DL3
Alternative Name:	KIR3DL3 ( <a href="#">KIR3DL3 Products</a> )

## Target Details

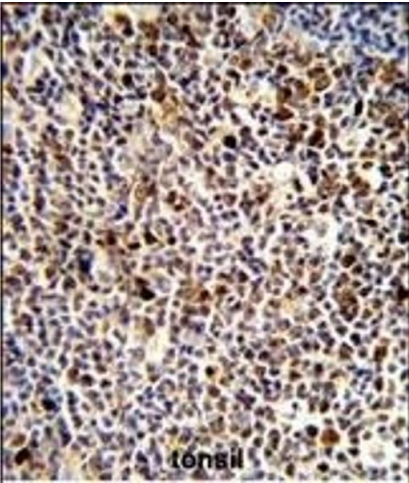
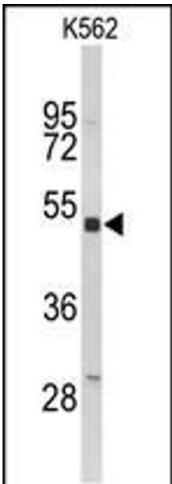
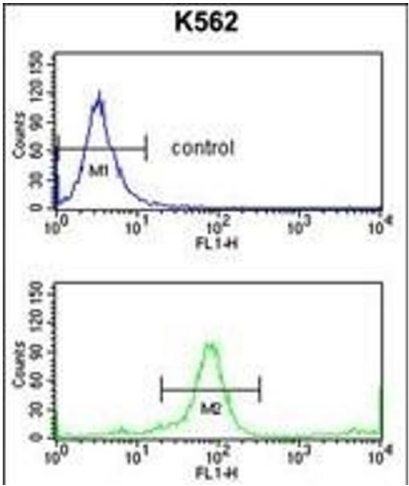
Background:	KIR3DL3 is transmembrane glycoproteins expressed by natural killer cells and subsets of T cells. This protein are polymorphic and highly homologous and they are found in a cluster on chromosome 19q13.4 within the 1 Mb leukocyte receptor complex (LRC).
Molecular Weight:	44928
Gene ID:	115653
NCBI Accession:	<a href="#">NP_703144</a>
UniProt:	<a href="#">Q8N743</a>

## Application Details

Application Notes:	WB: 1:1000. IHC-P: 1:50~100. FC: 1:10~50
Restrictions:	For Research Use only

## Handling

Format:	Liquid
Buffer:	Purified polyclonal antibody supplied in PBS with 0.09 % (W/V) sodium azide.
Preservative:	Sodium azide
Precaution of Use:	This product contains Sodium azide: a POISONOUS AND HAZARDOUS SUBSTANCE which should be handled by trained staff only.
Storage:	4 °C, -20 °C
Storage Comment:	Maintain refrigerated at 2-8 °C for up to 6 months. For long term storage store at -20 °C in small aliquots to prevent freeze-thaw cycles.
Expiry Date:	6 months



### Flow Cytometry

**Image 1.** KIR3DL3 Antibody (Center) (ABIN653117 and ABIN2842700) flow cytometry analysis of K562 cells (bottom histogram) compared to a negative control cell (top histogram). FITC-conjugated goat-anti-rabbit secondary antibody was used for the analysis.

### Western Blotting

**Image 2.** Western blot analysis of KIR3DL3 Antibody (Center) (ABIN653117 and ABIN2842700) in K562 cell line lysates (35 µg/lane). KIR3DL3 (arrow) was detected using the purified Pab.

### Immunohistochemistry (Paraffin-embedded Sections)

**Image 3.** Formalin-fixed and paraffin-embedded human tonsil reacted with KIR3DL3 Antibody (Center), which was peroxidase-conjugated to the secondary antibody, followed by DAB staining. This data demonstrates the use of this antibody for immunohistochemistry, clinical relevance has not been evaluated.