

Datasheet for ABIN653119
anti-SLC25A17 antibody (N-Term)

3 Images

[Go to Product page](#)

Overview

Quantity:	400 µL
Target:	SLC25A17
Binding Specificity:	AA 17-44, N-Term
Reactivity:	Human, Mouse
Host:	Rabbit
Clonality:	Polyclonal
Conjugate:	This SLC25A17 antibody is un-conjugated
Application:	Western Blotting (WB), Flow Cytometry (FACS)

Product Details

Immunogen:	This SLC25A17 antibody is generated from rabbits immunized with a KLH conjugated synthetic peptide between 17-44 amino acids from the N-terminal region of human SLC25A17.
Clone:	RB22650
Isotype:	Ig Fraction
Purification:	This antibody is purified through a protein A column, followed by peptide affinity purification.

Target Details

Target:	SLC25A17
Alternative Name:	SLC25A17 (SLC25A17 Products)
Background:	This protein encodes a selenoprotein, which contains a selenocysteine (Sec) residue at its

Target Details

active site. The selenocysteine is encoded by the UGA codon that normally signals translation termination. The 3' UTR of selenoprotein genes have a common stem-loop structure, the sec insertion sequence (SECIS), that is necessary for the recognition of UGA as a Sec codon rather than as a stop signal. Studies suggest that this protein may regulate cytokine production, and thus play a key role in the control of the inflammatory response.

Molecular Weight: 34567

Gene ID: 10478

NCBI Accession: [NP_006349](#)

UniProt: [O43808](#)

Pathways: [Monocarboxylic Acid Catabolic Process](#)

Application Details

Application Notes: WB: 1:1000. WB: 1:1000. FC: 1:10~50

Restrictions: For Research Use only

Handling

Format: Liquid

Buffer: Purified polyclonal antibody supplied in PBS with 0.09 % (W/V) sodium azide.

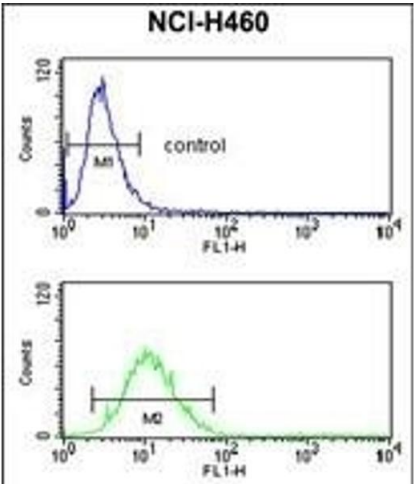
Preservative: Sodium azide

Precaution of Use: This product contains Sodium azide: a POISONOUS AND HAZARDOUS SUBSTANCE which should be handled by trained staff only.

Storage: 4 °C, -20 °C

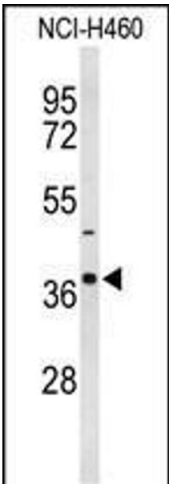
Storage Comment: Maintain refrigerated at 2-8 °C for up to 6 months. For long term storage store at -20 °C in small aliquots to prevent freeze-thaw cycles.

Expiry Date: 6 months



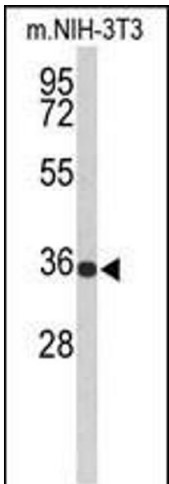
Flow Cytometry

Image 1. SLC25A17 Antibody (N-term) (ABIN653119 and ABIN2842701) flow cytometry analysis of NCI- cells (bottom histogram) compared to a negative control cell (top histogram). FITC-conjugated goat-anti-rabbit secondary antibodies were used for the analysis.



Western Blotting

Image 2. Western blot analysis of SLC25A17 Antibody (N-term) (ABIN653119 and ABIN2842701) in NCI- cell line lysates (35 µg/lane). SLC25A17 (arrow) was detected using the purified Pab.



Western Blotting

Image 3. Western blot analysis of SLC25A17 Antibody (N-term) (ABIN653119 and ABIN2842701) in Mouse NIH-3T3 cell line lysates (35 µg/lane). SLC25A17 (arrow) was detected using the purified Pab.