

Datasheet for ABIN653124

anti-Tryptophan Hydroxylase 2 antibody (AA 168-193)**3** Images[Go to Product page](#)

Overview

Quantity:	400 µL
Target:	Tryptophan Hydroxylase 2 (TPH2)
Binding Specificity:	AA 168-193
Reactivity:	Human
Host:	Rabbit
Clonality:	Polyclonal
Conjugate:	This Tryptophan Hydroxylase 2 antibody is un-conjugated
Application:	Western Blotting (WB), Flow Cytometry (FACS), Immunohistochemistry (Paraffin-embedded Sections) (IHC (p))

Product Details

Immunogen:	This TPH2 antibody is generated from rabbits immunized with a KLH conjugated synthetic peptide between 168-193 amino acids from the Central region of human TPH2.
Clone:	RB22900
Isotype:	Ig Fraction
Predicted Reactivity:	Hs, M, Rat
Purification:	This antibody is purified through a protein A column, followed by peptide affinity purification.

Target Details

Target:	Tryptophan Hydroxylase 2 (TPH2)
---------	---------------------------------

Target Details

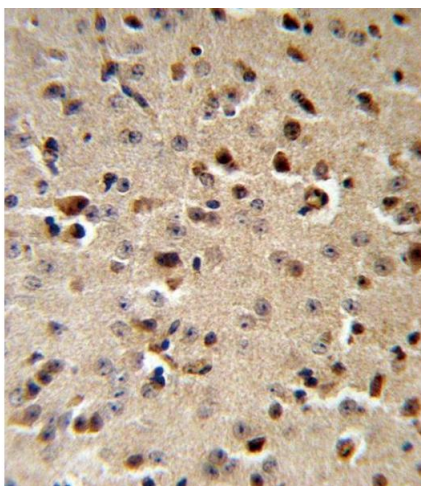
Alternative Name:	TPH2 (TPH2 Products)
Background:	This protein is a member of the cytidine deaminase gene family. It is one of seven related genes or pseudogenes found in a cluster, thought to result from gene duplication, on chromosome 22. Members of the cluster encode proteins that are structurally and functionally related to the C to U RNA-editing cytidine deaminase APOBEC1. It is thought that the proteins may be RNA editing enzymes and have roles in growth or cell cycle control.
Molecular Weight:	56057
Gene ID:	121278
NCBI Accession:	NP_775489
UniProt:	Q8IWU9

Application Details

Application Notes:	WB: 1:1000. IHC-P: 1:10~50. FC: 1:10~50
Restrictions:	For Research Use only

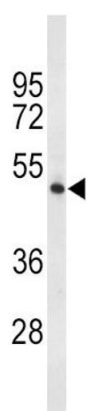
Handling

Format:	Liquid
Buffer:	Purified polyclonal antibody supplied in PBS with 0.09 % (W/V) sodium azide.
Preservative:	Sodium azide
Precaution of Use:	This product contains Sodium azide: a POISONOUS AND HAZARDOUS SUBSTANCE which should be handled by trained staff only.
Storage:	4 °C, -20 °C
Storage Comment:	Maintain refrigerated at 2-8 °C for up to 6 months. For long term storage store at -20 °C in small aliquots to prevent freeze-thaw cycles.
Expiry Date:	6 months



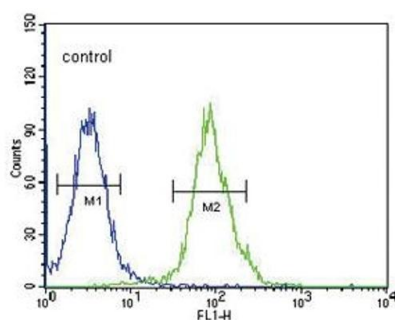
Immunohistochemistry (Paraffin-embedded Sections)

Image 1. TPH2 Antibody (Center) (ABIN653124 and ABIN2842704) IHC analysis in formalin fixed and paraffin embedded mouse brain followed by peroxidase conjugation of the secondary antibody and DAB staining. This data demonstrates the use of the TPH2 Antibody (Center) for immunohistochemistry. Clinical relevance has not been evaluated.



Western Blotting

Image 2. Western blot analysis of TPH2 Antibody (Center) (ABIN653124 and ABIN2842704) in 293 cell line lysates (35 µg/lane). TPH2 (arrow) was detected using the purified Pab.



Flow Cytometry

Image 3. TPH2 Antibody (Center) (ABIN653124 and ABIN2842704) flow cytometric analysis of 293 cells (right histogram) compared to a negative control cell (left histogram). FITC-conjugated goat-anti-rabbit secondary antibodies were used for the analysis.