



Datasheet for ABIN653129
anti-DCP2 antibody (AA 144-173)



[Go to Product page](#)

3 Images

Overview

Quantity:	400 µL
Target:	DCP2
Binding Specificity:	AA 144-173
Reactivity:	Human
Host:	Rabbit
Clonality:	Polyclonal
Conjugate:	This DCP2 antibody is un-conjugated
Application:	Western Blotting (WB), Flow Cytometry (FACS), Immunohistochemistry (Paraffin-embedded Sections) (IHC (p))

Product Details

Immunogen:	This DCP2 antibody is generated from rabbits immunized with a KLH conjugated synthetic peptide between 144-173 amino acids from the Central region of human DCP2.
Clone:	RB23240
Isotype:	Ig Fraction
Predicted Reactivity:	M
Purification:	This antibody is purified through a protein A column, followed by peptide affinity purification.

Target Details

Target:	DCP2
---------	------

Target Details

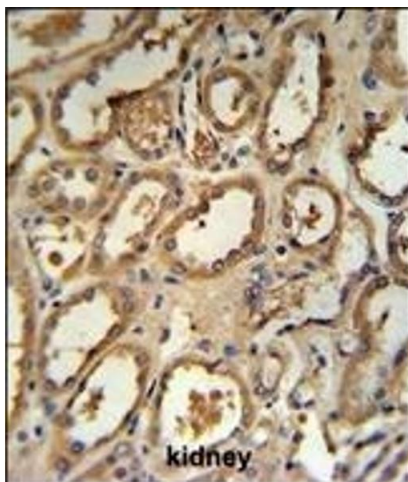
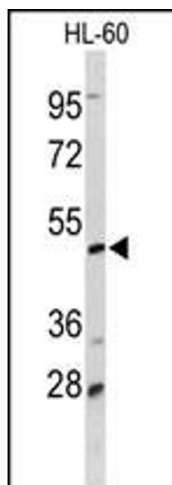
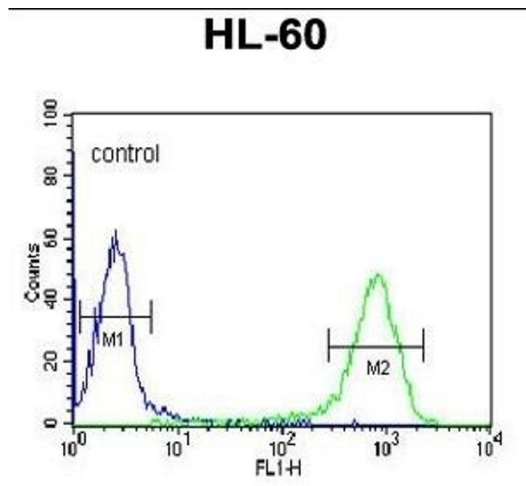
Alternative Name:	DCP2 (DCP2 Products)
Background:	DCP2 is a key component of an mRNA-decapping complex required for removal of the 5-prime cap from mRNA prior to its degradation from the 5-prime end (Fenger-Gron et al., 2005).
Molecular Weight:	48423
Gene ID:	167227
NCBI Accession:	NP_001229306 , NP_689837
UniProt:	Q8IU60

Application Details

Application Notes:	WB: 1:1000. IHC-P: 1:50~100. FC: 1:10~50
Restrictions:	For Research Use only

Handling

Format:	Liquid
Buffer:	Purified polyclonal antibody supplied in PBS with 0.09 % (W/V) sodium azide.
Preservative:	Sodium azide
Precaution of Use:	This product contains Sodium azide: a POISONOUS AND HAZARDOUS SUBSTANCE which should be handled by trained staff only.
Storage:	4 °C, -20 °C
Storage Comment:	Maintain refrigerated at 2-8 °C for up to 6 months. For long term storage store at -20 °C in small aliquots to prevent freeze-thaw cycles.
Expiry Date:	6 months



Flow Cytometry

Image 1. DCP2 Antibody (Center) (ABIN653129 and ABIN2842708) flow cytometric analysis of HL-60 cells (right histogram) compared to a negative control cell (left histogram). FITC-conjugated goat-anti-rabbit secondary antibodies were used for the analysis.

Western Blotting

Image 2. Western blot analysis of DCP2 Antibody (Center) (ABIN653129 and ABIN2842708) in HL-60 cell line lysates (35 µg/lane). DCP2 (arrow) was detected using the purified Pab.

Immunohistochemistry (Paraffin-embedded Sections)

Image 3. DCP2 Antibody (Center) (ABIN653129 and ABIN2842708) IHC analysis in formalin fixed and paraffin embedded human kidney tissue followed by peroxidase conjugation of the secondary antibody and DAB staining. This data demonstrates the use of the DCP2 Antibody (Center) for immunohistochemistry. Clinical relevance has not been evaluated.