

Datasheet for ABIN653133  
**anti-DEK antibody (C-Term)**[Go to Product page](#)

## 4 Images

## Overview

Quantity:	400 µL
Target:	DEK
Binding Specificity:	AA 336-364, C-Term
Reactivity:	Human
Host:	Rabbit
Clonality:	Polyclonal
Conjugate:	This DEK antibody is un-conjugated
Application:	Western Blotting (WB), Immunofluorescence (IF), Flow Cytometry (FACS), Immunohistochemistry (Paraffin-embedded Sections) (IHC (p))

## Product Details

Immunogen:	This DEK antibody is generated from rabbits immunized with a KLH conjugated synthetic peptide between 336-364 amino acids from the C-terminal region of human DEK.
Clone:	RB23679
Isotype:	Ig Fraction
Purification:	This antibody is purified through a protein A column, followed by peptide affinity purification.

## Target Details

Target:	DEK
Alternative Name:	DEK ( <a href="#">DEK Products</a> )

## Target Details

**Background:** DEK is a protein with one SAP domain. This protein binds to cruciform and superhelical DNA and induces positive supercoils into closed circular DNA, and is also involved in splice site selection during mRNA processing. Chromosomal aberrations involving this region, increased expression of this gene, and the presence of antibodies against this protein are all associated with various diseases.

**Molecular Weight:** 42674

**Gene ID:** 7913

**NCBI Accession:** [NP\\_001128181](#), [NP\\_003463](#)

**UniProt:** [P35659](#)

## Application Details

**Application Notes:** IF: 1:10~50. WB: 1:1000. IHC-P: 1:50~100. FC: 1:10~50

**Restrictions:** For Research Use only

## Handling

**Format:** Liquid

**Buffer:** Purified polyclonal antibody supplied in PBS with 0.09 % (W/V) sodium azide.

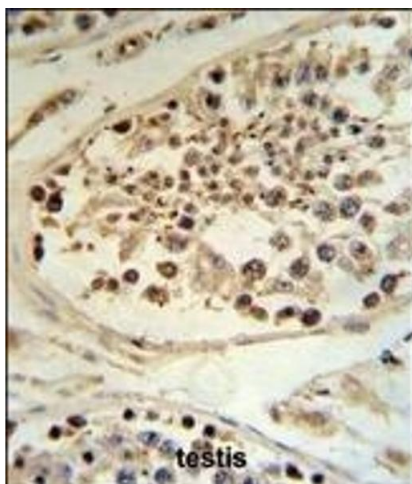
**Preservative:** Sodium azide

**Precaution of Use:** This product contains Sodium azide: a POISONOUS AND HAZARDOUS SUBSTANCE which should be handled by trained staff only.

**Storage:** 4 °C,-20 °C

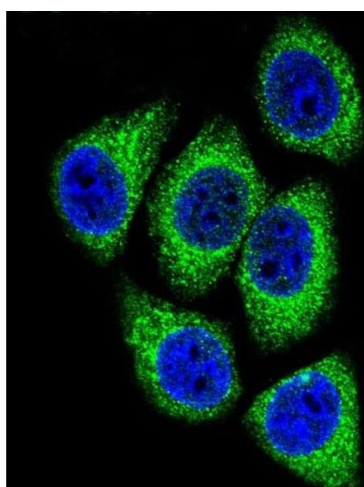
**Storage Comment:** Maintain refrigerated at 2-8 °C for up to 6 months. For long term storage store at -20 °C in small aliquots to prevent freeze-thaw cycles.

**Expiry Date:** 6 months



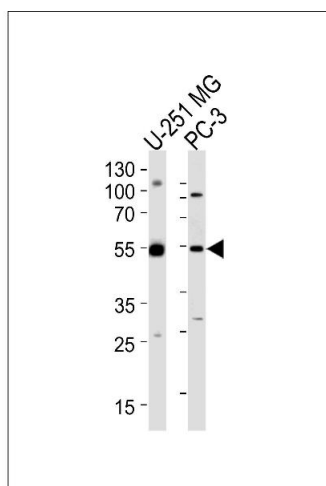
#### Immunohistochemistry (Paraffin-embedded Sections)

**Image 1.** DEK Antibody (C-term) (ABIN653133 and ABIN2842710) IHC analysis in formalin fixed and paraffin embedded human testis tissue followed by peroxidase conjugation of the secondary antibody and DAB staining. This data demonstrates the use of the DEK Antibody (C-term) for immunohistochemistry. Clinical relevance has not been evaluated.



#### Immunofluorescence

**Image 2.** Confocal immunofluorescent analysis of DEK Antibody (C-term) (ABIN653133 and ABIN2842710) with HeLa cells followed by Alexa Fluor 488-conjugated goat anti-rabbit IgG (green). DAPI was used to stain the cell nuclei (blue).



#### Western Blotting

**Image 3.** Western blot analysis of lysates from U-251 MG, PC-3 cell line (from left to right), using DEK Antibody (C-term) (ABIN653133 and ABIN2842710). (ABIN653133 and ABIN2842710) was diluted at 1:1000 at each lane. A goat anti-rabbit IgG H&L(HRP) at 1:5000 dilution was used as the secondary antibody. Lysates at 35 µg per lane.

Please check the [product details page](#) for more images. Overall 4 images are available for ABIN653133.