



Datasheet for ABIN653148
anti-MPP6 antibody (AA 360-388)



[Go to Product page](#)

2 Images

Overview

Quantity:	400 µL
Target:	MPP6
Binding Specificity:	AA 360-388
Reactivity:	Human, Mouse
Host:	Rabbit
Clonality:	Polyclonal
Conjugate:	This MPP6 antibody is un-conjugated
Application:	Western Blotting (WB), Flow Cytometry (FACS)

Product Details

Immunogen:	This MPP6 antibody is generated from rabbits immunized with a KLH conjugated synthetic peptide between 360-388 amino acids from the Central region of human MPP6.
Clone:	RB17454
Isotype:	Ig Fraction
Purification:	This antibody is prepared by Saturated Ammonium Sulfate (SAS) precipitation followed by dialysis against PBS.

Target Details

Target:	MPP6
Alternative Name:	MPP6 (MPP6 Products)

Target Details

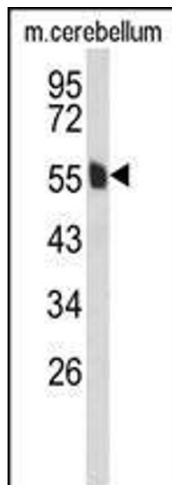
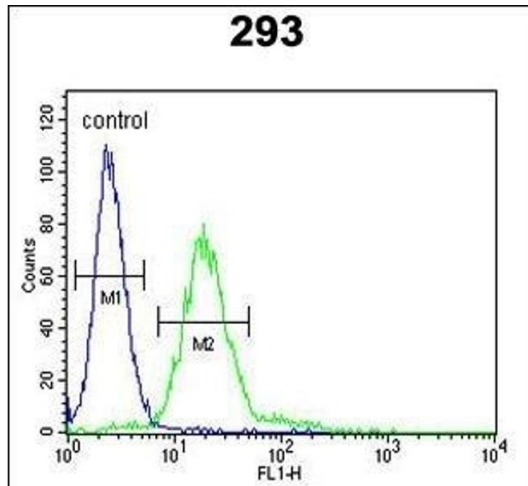
Background:	Members of the peripheral membrane-associated guanylate kinase (MAGUK) family function in tumor suppression and receptor clustering by forming multiprotein complexes containing distinct sets of transmembrane, cytoskeletal, and cytoplasmic signaling proteins. All MAGUKs contain a PDZ-SH3-GUK core and are divided into 4 subfamilies, DLG-like (see DLG1, MIM 601014), ZO1-like (see TJP1, MIM 601009), p55-like (see MPP1, MIM 305360), and LIN2-like (see CASK, MIM 300172), based on their size and the presence of additional domains. MPP6 is a member of the p55-like MAGUK subfamily.
Molecular Weight:	61117
Gene ID:	51678
NCBI Accession:	NP_057531
UniProt:	Q9NZW5
Pathways:	Nucleotide Phosphorylation

Application Details

Application Notes:	WB: 1:1000. FC: 1:10~50
Restrictions:	For Research Use only

Handling

Format:	Liquid
Buffer:	Purified polyclonal antibody supplied in PBS with 0.09 % (W/V) sodium azide.
Preservative:	Sodium azide
Precaution of Use:	This product contains Sodium azide: a POISONOUS AND HAZARDOUS SUBSTANCE which should be handled by trained staff only.
Storage:	4 °C,-20 °C
Storage Comment:	Maintain refrigerated at 2-8 °C for up to 6 months. For long term storage store at -20 °C in small aliquots to prevent freeze-thaw cycles.
Expiry Date:	6 months



Flow Cytometry

Image 1. P6 Antibody (Center) (ABIN653148 and ABIN2842720) flow cytometric analysis of 293 cells (right histogram) coated to a negative control cell (left histogram). FITC-conjugated goat-anti-rabbit secondary antibodies were used for the analysis.

Western Blotting

Image 2. Western blot analysis of P6 Antibody (Center) (ABIN653148 and ABIN2842720) in mouse cerebellum tissue lysates (35 µg/lane). P6 (arrow) was detected using the purified Pab.