

Datasheet for ABIN653154  
**anti-SLC39A3 antibody (AA 106-134)**

## 2 Images

[Go to Product page](#)

## Overview

|                      |  |
|----------------------|--|
| Quantity:            | 400 µL   |
| Target:              | SLC39A3  |
| Binding Specificity: | AA 106-134   |
| Reactivity:          | Human, Mouse   |
| Host:                | Rabbit   |
| Clonality:           | Polyclonal   |
| Conjugate:           | This SLC39A3 antibody is un-conjugated   |
| Application:         | Western Blotting (WB), Immunohistochemistry (Paraffin-embedded Sections) (IHC (p)) |

## Product Details

|               |   |
|---------------|---|
| Immunogen:    | This S39A3 antibody is generated from rabbits immunized with a KLH conjugated synthetic peptide between 106-134 amino acids from the Central region of human S39A3. |
| Clone:        | RB24733   |
| Isotype:      | Ig Fraction   |
| Purification: | This antibody is purified through a protein A column, followed by peptide affinity purification.  |

## Target Details

|                   |  |
|-------------------|--|
| Target:           | SLC39A3                                    |
| Alternative Name: | S39A3 ( <a href="#">SLC39A3 Products</a> ) |
| Molecular Weight: | 33601                                      |

## Target Details

|                 |  |
|-----------------|--|
| Gene ID:        | 29985  |
| NCBI Accession: | <a href="#">NP_653165</a> , <a href="#">NP_998733</a>  |
| UniProt:        | <a href="#">Q9BRY0</a>   |
| Pathways:       | <a href="#">NF-kappaB Signaling</a> , <a href="#">Neurotrophin Signaling Pathway</a> , <a href="#">Autophagy</a> |

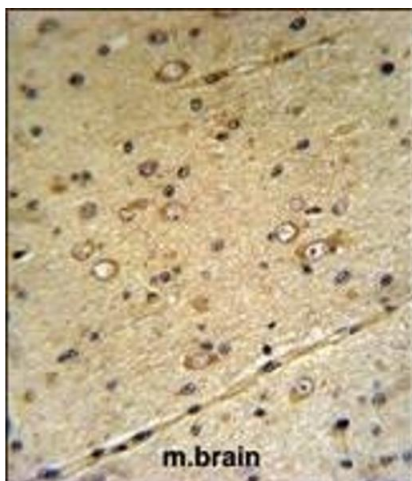
## Application Details

|                    |                             |
|--------------------|-----------------------------|
| Application Notes: | WB: 1:1000. IHC-P: 1:50~100 |
| Restrictions:      | For Research Use only       |

## Handling

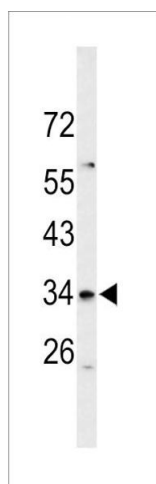
|                    |  |
|--------------------|--|
| Format:            | Liquid   |
| Buffer:            | Purified polyclonal antibody supplied in PBS with 0.09 % (W/V) sodium azide.   |
| Preservative:      | Sodium azide   |
| Precaution of Use: | This product contains Sodium azide: a POISONOUS AND HAZARDOUS SUBSTANCE which should be handled by trained staff only.                     |
| Storage:           | 4 °C, -20 °C   |
| Storage Comment:   | Maintain refrigerated at 2-8 °C for up to 6 months. For long term storage store at -20 °C in small aliquots to prevent freeze-thaw cycles. |
| Expiry Date:       | 6 months   |

## Images



### Immunohistochemistry (Paraffin-embedded Sections)

**Image 1.** S39A3 Antibody (Center) (ABIN653154 and ABIN2842722) IHC analysis in formalin fixed and paraffin embedded mouse brain tissue followed by peroxidase conjugation of the secondary antibody and DAB staining. This data demonstrates the use of the S39A3 Antibody (Center) for immunohistochemistry. Clinical relevance has not been evaluated.



### Western Blotting

**Image 2.** Western blot analysis of S39A3 Antibody (Center) (ABIN653154 and ABIN2842722) in mouse cerebellum tissue lysates (35 µg/lane). S39A3 (arrow) was detected using the purified Pab.