

Datasheet for ABIN653158
anti-REG3A antibody (N-Term)

3 Images

[Go to Product page](#)

Overview

Quantity:	400 µL
Target:	REG3A
Binding Specificity:	AA 12-39, N-Term
Reactivity:	Human
Host:	Rabbit
Clonality:	Polyclonal
Conjugate:	This REG3A antibody is un-conjugated
Application:	Western Blotting (WB), Flow Cytometry (FACS)

Product Details

Immunogen:	This REG3A antibody is generated from rabbits immunized with a KLH conjugated synthetic peptide between 12-39 amino acids from the N-terminal region of human REG3A.
Clone:	RB21532
Isotype:	IgG
Purification:	This antibody is purified through a protein A column, followed by peptide affinity purification.

Target Details

Target:	REG3A
Alternative Name:	REG3A (REG3A Products)
Background:	REG3A encodes a pancreatic secretory protein that may be involved in cell proliferation or

Target Details

differentiation. It has similarity to the C-type lectin superfamily. The enhanced expression of this protein is observed during pancreatic inflammation and liver carcinogenesis.

Molecular Weight: 19395

Gene ID: 5068

NCBI Accession: [NP_002571](#), [NP_620354](#), [NP_620355](#)

UniProt: [Q06141](#)

Application Details

Application Notes: WB: 1:1000. WB: 1:1000. FC: 1:10~50

Restrictions: For Research Use only

Handling

Format: Liquid

Buffer: Purified polyclonal antibody supplied in PBS with 0.09 % (W/V) sodium azide.

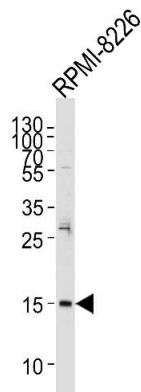
Preservative: Sodium azide

Precaution of Use: This product contains Sodium azide: a POISONOUS AND HAZARDOUS SUBSTANCE which should be handled by trained staff only.

Storage: 4 °C,-20 °C

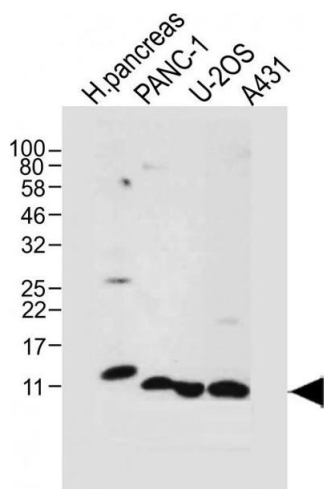
Storage Comment: Maintain refrigerated at 2-8 °C for up to 6 months. For long term storage store at -20 °C in small aliquots to prevent freeze-thaw cycles.

Expiry Date: 6 months



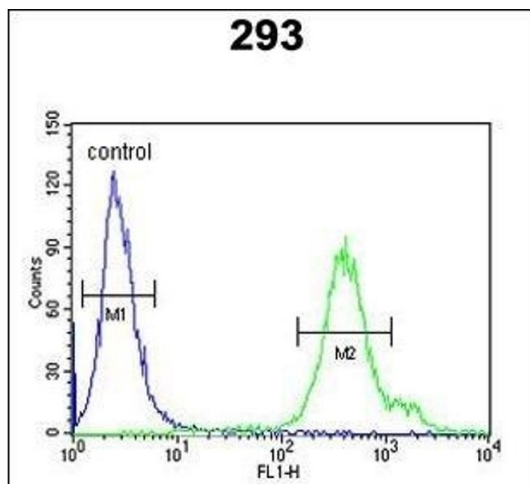
Western Blotting

Image 1. Western blot analysis of lysate from RPMI-8226 cell line, using REG3A Antibody (N-term) (ABIN653158 and ABIN2842726). (ABIN653158 and ABIN2842726) was diluted at 1:1000 at each lane. A goat anti-rabbit IgG H&L(HRP) at 1:5000 dilution was used as the secondary antibody. Lysate at 35 µg per lane.



Western Blotting

Image 2. All lanes : Anti-REG3A Antibody (N-term) at 1:1000 dilution Lane 1: Human pancreas tissue lysate Lane 2: NC-1 whole cell lysate Lane 3: U-2OS whole cell lysate Lane 4: A431 whole cell lysate Lysates/proteins at 20 µg per lane. Secondary Goat Anti-Rabbit IgG, (H+L), Peroxidase conjugated at 1/10000 dilution. Predicted band size : 19 kDa Blocking/Dilution buffer: 5 % NFDM/TBST.



Flow Cytometry

Image 3. REG3A Antibody (N-term) (ABIN653158 and ABIN2842726) flow cytometric analysis of 293 cells (right histogram) compared to a negative control cell (left histogram). FITC-conjugated goat-anti-rabbit secondary antibodies were used for the analysis.