

Datasheet for ABIN653159
anti-FOXL1 antibody (AA 94-119)[Go to Product page](#)

2 Images

Overview

Quantity:	400 µL
Target:	FOXL1
Binding Specificity:	AA 94-119
Reactivity:	Human, Mouse
Host:	Rabbit
Clonality:	Polyclonal
Conjugate:	This FOXL1 antibody is un-conjugated
Application:	Western Blotting (WB)

Product Details

Immunogen:	This FOXL1 antibody is generated from rabbits immunized with a KLH conjugated synthetic peptide between 94-119 amino acids from the Central region of human FOXL1.
Clone:	RB22147
Isotype:	Ig Fraction
Purification:	This antibody is purified through a protein A column, followed by peptide affinity purification.

Target Details

Target:	FOXL1
Alternative Name:	FOXL1 (FOXL1 Products)
Background:	The forkhead domain is a 100-amino acid monomeric DNA binding motif originally identified as

Target Details

a region of homology between the Drosophila forkhead protein and rat HNF3. Pierrou et al. (1994) identified 7 human genes containing forkhead domains and designated them forkhead related activators (FREAC) 1 through 7.

Gene ID: 2300

NCBI Accession: [NP_005241](#)

UniProt: [Q12952](#)

Application Details

Application Notes: WB: 1:1000. WB: 1:1000

Restrictions: For Research Use only

Handling

Format: Liquid

Buffer: Purified polyclonal antibody supplied in PBS with 0.09 % (W/V) sodium azide.

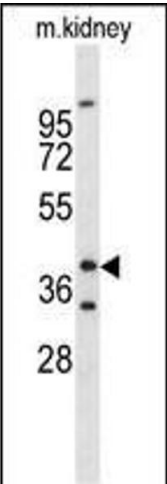
Preservative: Sodium azide

Precaution of Use: This product contains Sodium azide: a POISONOUS AND HAZARDOUS SUBSTANCE which should be handled by trained staff only.

Storage: 4 °C,-20 °C

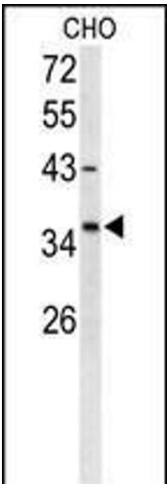
Storage Comment: Maintain refrigerated at 2-8 °C for up to 6 months. For long term storage store at -20 °C in small aliquots to prevent freeze-thaw cycles.

Expiry Date: 6 months



Western Blotting

Image 1. Western blot analysis of FOXL1 Antibody (Center) (ABIN653159 and ABIN2842727) in mouse kidney tissue lysates (35 µg/lane).FOXL1 (arrow) was detected using the purified Pab.



Western Blotting

Image 2. Western blot analysis of FOXL1 Antibody (Center) (ABIN653159 and ABIN2842727) in CHO cell line lysates (35 µg/lane).FOXL1 (arrow) was detected using the purified Pab,