

Datasheet for ABIN653165  
**anti-ERGIC3 antibody (N-Term)**[Go to Product page](#)

## 3 Images

## Overview

Quantity:	400 µL
Target:	ERGIC3
Binding Specificity:	AA 1-30, N-Term
Reactivity:	Human
Host:	Rabbit
Clonality:	Polyclonal
Conjugate:	This ERGIC3 antibody is un-conjugated
Application:	Western Blotting (WB), Immunohistochemistry (Paraffin-embedded Sections) (IHC (p))

## Product Details

Immunogen:	This ERGIC3 antibody is generated from rabbits immunized with a KLH conjugated synthetic peptide between 1-30 amino acids from the N-terminal region of human ERGIC3.
Clone:	RB22586
Isotype:	Ig Fraction
Predicted Reactivity:	B, Zf, Pr, M
Purification:	This antibody is purified through a protein A column, followed by peptide affinity purification.

## Target Details

Target:	ERGIC3
Alternative Name:	ERGIC3 ( <a href="#">ERGIC3 Products</a> )

## Target Details

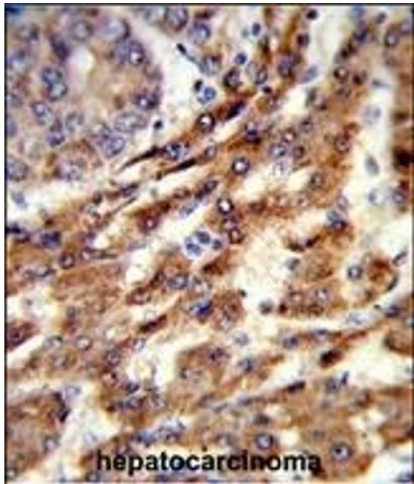
Background:	ERGIC3 is possible role in transport between endoplasmic reticulum and Golgi.
Molecular Weight:	43222
Gene ID:	51614
NCBI Accession:	<a href="#">NP_057050</a> , <a href="#">NP_938408</a>
UniProt:	<a href="#">Q9Y282</a>

## Application Details

Application Notes:	WB: 1:1000. WB: 1:1000. IHC-P: 1:50~100
Restrictions:	For Research Use only

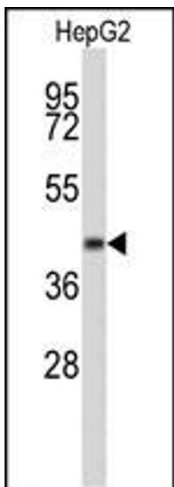
## Handling

Format:	Liquid
Buffer:	Purified polyclonal antibody supplied in PBS with 0.09 % (W/V) sodium azide.
Preservative:	Sodium azide
Precaution of Use:	This product contains Sodium azide: a POISONOUS AND HAZARDOUS SUBSTANCE which should be handled by trained staff only.
Storage:	4 °C,-20 °C
Storage Comment:	Maintain refrigerated at 2-8 °C for up to 6 months. For long term storage store at -20 °C in small aliquots to prevent freeze-thaw cycles.
Expiry Date:	6 months



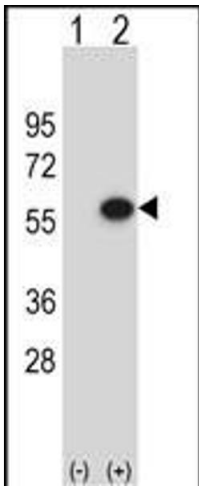
**Immunohistochemistry (Paraffin-embedded Sections)**

**Image 1.** Formalin-fixed and paraffin-embedded human hepatocarcinoma reacted with ERGIC3 Antibody (N-term), which was peroxidase-conjugated to the secondary antibody, followed by DAB staining. This data demonstrates the use of this antibody for immunohistochemistry, clinical relevance has not been evaluated.



**Western Blotting**

**Image 2.** Western blot analysis of ERGIC3 Antibody (N-term) R in HepG2 cell line lysates (35 µg/lane). ERGIC3 (arrow) was detected using the purified Pab.



**Western Blotting**

**Image 3.** Western blot analysis of ERGIC3 (arrow) using rabbit polyclonal ERGIC3 Antibody (N-term) (ABIN653165 and ABIN2842731). 293 cell lysates (2 µg/lane) either nontransfected (Lane 1) or transiently transfected (Lane 2) with the ERGIC3 gene.