

Datasheet for ABIN653167  
**anti-Tricellulin antibody (C-Term)**[Go to Product page](#)

## 2 Images

## Overview

Quantity:	400 µL
Target:	Tricellulin (MARVELD2)
Binding Specificity:	AA 386-415, C-Term
Reactivity:	Human
Host:	Rabbit
Clonality:	Polyclonal
Conjugate:	This Tricellulin antibody is un-conjugated
Application:	Western Blotting (WB), Immunohistochemistry (Paraffin-embedded Sections) (IHC (p))

## Product Details

Immunogen:	This MALD2 antibody is generated from rabbits immunized with a KLH conjugated synthetic peptide between 386-415 amino acids from the C-terminal region of human MALD2.
Clone:	RB24717
Isotype:	Ig Fraction
Purification:	This antibody is purified through a protein A column, followed by peptide affinity purification.

## Target Details

Target:	Tricellulin (MARVELD2)
Alternative Name:	MALD2 ( <a href="#">MARVELD2 Products</a> )
Background:	MALD2 plays a role in the formation of the epithelial barriers. The separation of the

## Target Details

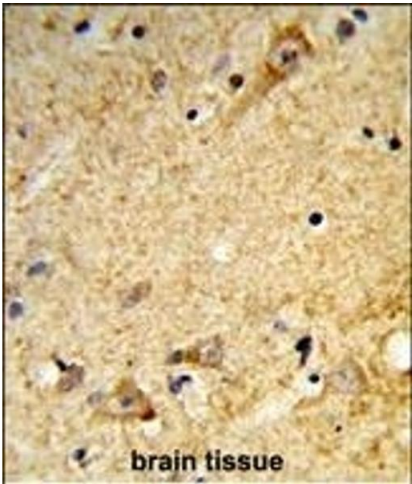
	endolymphatic and perilymphatic spaces of the organ of Corti from one another by epithelial barriers is required for normal hearing.
Molecular Weight:	64168
Gene ID:	153562
NCBI Accession:	<a href="#">NP_001033692</a> , <a href="#">NP_001231663</a>
UniProt:	<a href="#">Q8N4S9</a>
Pathways:	<a href="#">Sensory Perception of Sound</a> , <a href="#">Cell-Cell Junction Organization</a>

## Application Details

Application Notes:	WB: 1:1000. IHC-P: 1:50~100
Restrictions:	For Research Use only

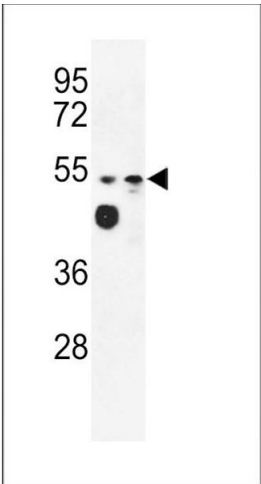
## Handling

Format:	Liquid
Buffer:	Purified polyclonal antibody supplied in PBS with 0.09 % (W/V) sodium azide.
Preservative:	Sodium azide
Precaution of Use:	This product contains Sodium azide: a POISONOUS AND HAZARDOUS SUBSTANCE which should be handled by trained staff only.
Storage:	4 °C, -20 °C
Storage Comment:	Maintain refrigerated at 2-8 °C for up to 6 months. For long term storage store at -20 °C in small aliquots to prevent freeze-thaw cycles.
Expiry Date:	6 months



**Immunohistochemistry (Paraffin-embedded Sections)**

**Image 1.** Forlin-fixed and paraffin-embedded hun brain tissue reacted with LD2 Antibody (C-term), which was peroxidase-conjugated to the secondary antibody, followed by DAB staining. This data demonstrates the use of this antibody for immunohistochemistry, clinical relevance has not been evaluated.



**Western Blotting**

**Image 2.** Western blot analysis of LD2 Antibody (C-term) (ABIN653167 and ABIN2842732) in WiDr, MDA-M cell line lysates (35 µg/lane). LD2 (arrow) was detected using the purified Pab.