

Datasheet for ABIN653170
anti-CLDN8 antibody (AA 140-166)[Go to Product page](#)

2 Images

1 Publication

Overview

Quantity:	400 µL
Target:	CLDN8
Binding Specificity:	AA 140-166
Reactivity:	Human
Host:	Rabbit
Clonality:	Polyclonal
Conjugate:	This CLDN8 antibody is un-conjugated
Application:	Western Blotting (WB), Flow Cytometry (FACS)

Product Details

Immunogen:	This CLDN8 antibody is generated from rabbits immunized with a KLH conjugated synthetic peptide between 140-166 amino acids from the Central region of human CLDN8.
Clone:	RB23223
Isotype:	Ig Fraction
Purification:	This antibody is purified through a protein A column, followed by peptide affinity purification.

Target Details

Target:	CLDN8
Alternative Name:	CLDN8 (CLDN8 Products)
Background:	CLDN8 is components of epithelial cell tight junctions. Tight junctions regulate movement of

Target Details

	solutes and ions through the paracellular space and prevent mixing of proteins and lipids in the outer leaflet of the apical and basolateral plasma membrane domains
Molecular Weight:	24845
Gene ID:	9073
NCBI Accession:	NP_955360
UniProt:	P56748
Pathways:	Hepatitis C

Application Details

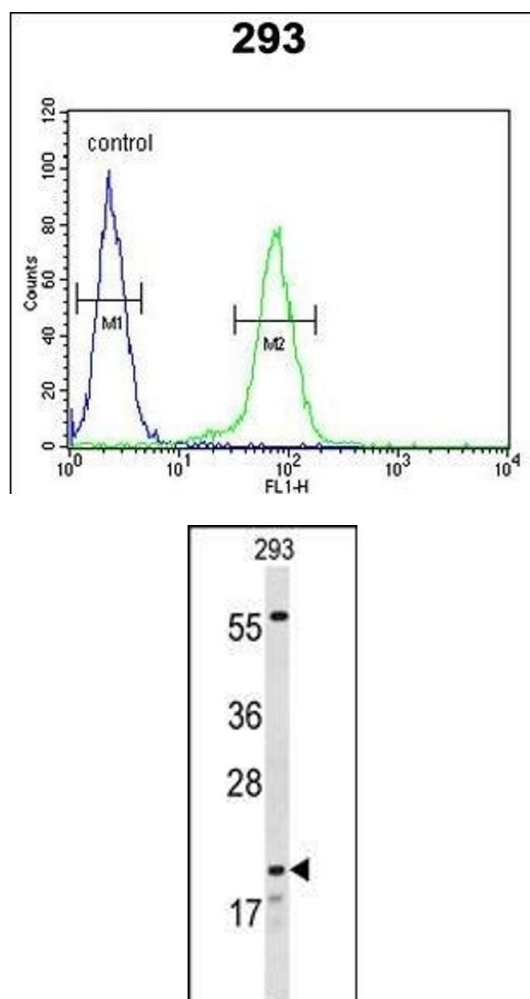
Application Notes:	WB: 1:1000. FC: 1:10~50
Restrictions:	For Research Use only

Handling

Format:	Liquid
Buffer:	Purified polyclonal antibody supplied in PBS with 0.09 % (W/V) sodium azide.
Preservative:	Sodium azide
Precaution of Use:	This product contains Sodium azide: a POISONOUS AND HAZARDOUS SUBSTANCE which should be handled by trained staff only.
Storage:	4 °C, -20 °C
Storage Comment:	Maintain refrigerated at 2-8 °C for up to 6 months. For long term storage store at -20 °C in small aliquots to prevent freeze-thaw cycles.
Expiry Date:	6 months

Publications

Product cited in:	He, Yang, Li: "The clinical pathological significance of Thy1 and CD49f expression in chondrosarcomas." in: Pathology, research and practice , Vol. 212, Issue 7, pp. 636-42, (2017) (PubMed).
-------------------	---



Flow Cytometry

Image 1. CLDN8 Antibody (Center) (ABIN653170 and ABIN2842734) flow cytometric analysis of 293 cells (right histogram) compared to a negative control cell (left histogram). FITC-conjugated goat-anti-rabbit secondary antibodies were used for the analysis.

Western Blotting

Image 2. Western blot analysis of CLDN8 Antibody (Center) (ABIN653170 and ABIN2842734) in 293 cell line lysates (35 μ g/lane). CLDN8 (arrow) was detected using the purified Pab.