



[Go to Product page](#)

Datasheet for ABIN653181
anti-EXTL2 antibody (C-Term)

2 Images

Overview

Quantity:	400 µL
Target:	EXTL2
Binding Specificity:	AA 269-295, C-Term
Reactivity:	Human, Mouse
Host:	Rabbit
Clonality:	Polyclonal
Conjugate:	This EXTL2 antibody is un-conjugated
Application:	Western Blotting (WB)

Product Details

Immunogen:	This EXTL2 antibody is generated from rabbits immunized with a KLH conjugated synthetic peptide between 269-295 amino acids from the C-terminal region of human EXTL2.
Clone:	RB23786
Isotype:	Ig Fraction
Purification:	This antibody is purified through a protein A column, followed by peptide affinity purification.

Target Details

Target:	EXTL2
Alternative Name:	EXTL2 (EXTL2 Products)
Background:	EXTL2 is a glycosyltransferase required for the biosynthesis of heparan-sulfate and responsible

Target Details

for the alternating addition of beta-1-4-linked glucuronic acid (GlcA) and alpha-1-4-linked N-acetylglucosamine (GlcNAc) units to nascent heparan sulfate chains.

Molecular Weight: 37466

Gene ID: 2135

NCBI Accession: [NP_001028197, NP_001430](#)

UniProt: [Q9UBQ6](#)

Application Details

Application Notes: WB: 1:1000. WB: 1:1000

Restrictions: For Research Use only

Handling

Format: Liquid

Buffer: Purified polyclonal antibody supplied in PBS with 0.09 % (W/V) sodium azide.

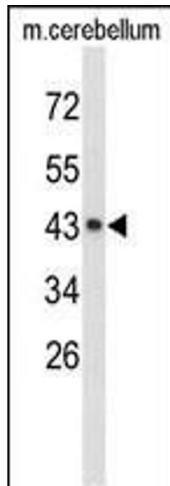
Preservative: Sodium azide

Precaution of Use: This product contains Sodium azide: a POISONOUS AND HAZARDOUS SUBSTANCE which should be handled by trained staff only.

Storage: 4 °C, -20 °C

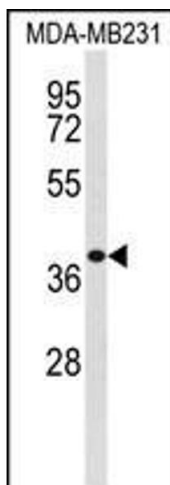
Storage Comment: Maintain refrigerated at 2-8 °C for up to 6 months. For long term storage store at -20 °C in small aliquots to prevent freeze-thaw cycles.

Expiry Date: 6 months



Western Blotting

Image 1. Western blot analysis of EXTL2 Antibody (C-term) (ABIN653181 and ABIN2842737) in mouse cerebellum tissue lysates (35 µg/lane). EXTL2 (arrow) was detected using the purified Pab.



Western Blotting

Image 2. Western blot analysis of EXTL2 Antibody (C-term) (ABIN653181 and ABIN2842737) in MDA-M cell line lysates (35 µg/lane). EXTL2 (arrow) was detected using the purified Pab,