

Datasheet for ABIN653195

**anti-Topoisomerase II alpha antibody (C-Term)**

## 4 Images

[Go to Product page](#)

## Overview

Quantity:	400 µL
Target:	Topoisomerase II alpha (TOP2A)
Binding Specificity:	AA 1167-1196, C-Term
Reactivity:	Human
Host:	Rabbit
Clonality:	Polyclonal
Conjugate:	This Topoisomerase II alpha antibody is un-conjugated
Application:	Western Blotting (WB), Immunofluorescence (IF), Immunohistochemistry (Paraffin-embedded Sections) (IHC (p))

## Product Details

Immunogen:	This TOP2A antibody is generated from rabbits immunized with a KLH conjugated synthetic peptide between 1167-1196 amino acids from the C-terminal region of human TOP2A.
Clone:	RB24346
Isotype:	Ig Fraction
Predicted Reactivity:	Ha, M, Rat
Purification:	This antibody is purified through a protein A column, followed by peptide affinity purification.

## Target Details

Target:	Topoisomerase II alpha (TOP2A)
---------	--------------------------------

## Target Details

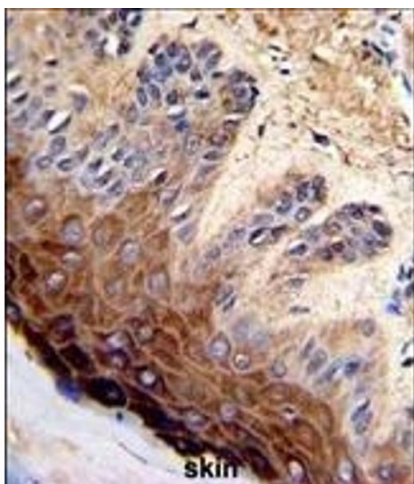
Alternative Name:	TOP2A ( <a href="#">TOP2A Products</a> )
Background:	TOP2A encodes a DNA topoisomerase, an enzyme that controls and alters the topologic states of DNA during transcription. This nuclear enzyme is involved in processes such as chromosome condensation, chromatid separation, and the relief of torsional stress that occurs during DNA transcription and replication. It catalyzes the transient breaking and rejoining of two strands of duplex DNA which allows the strands to pass through one another, thus altering the topology of DNA.
Molecular Weight:	174385
Gene ID:	7153
NCBI Accession:	<a href="#">NP_001058</a>
UniProt:	<a href="#">P11388</a>
Pathways:	<a href="#">Cell Division Cycle, Mitotic G1-G1/S Phases</a>

## Application Details

Application Notes:	IF: 1:10~50. WB: 1:1000. WB: 1:1000. IHC-P: 1:50~100
Restrictions:	For Research Use only

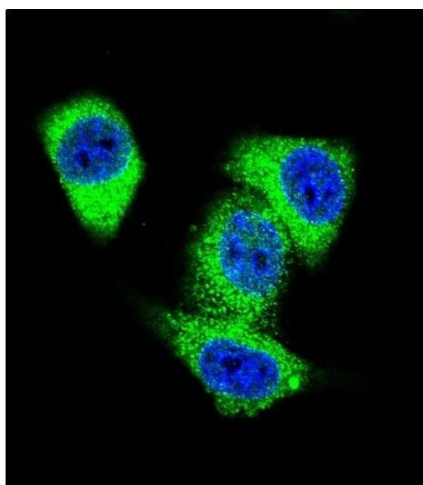
## Handling

Format:	Liquid
Buffer:	Purified polyclonal antibody supplied in PBS with 0.09 % (W/V) sodium azide.
Preservative:	Sodium azide
Precaution of Use:	This product contains Sodium azide: a POISONOUS AND HAZARDOUS SUBSTANCE which should be handled by trained staff only.
Storage:	4 °C,-20 °C
Storage Comment:	Maintain refrigerated at 2-8 °C for up to 6 months. For long term storage store at -20 °C in small aliquots to prevent freeze-thaw cycles.
Expiry Date:	6 months



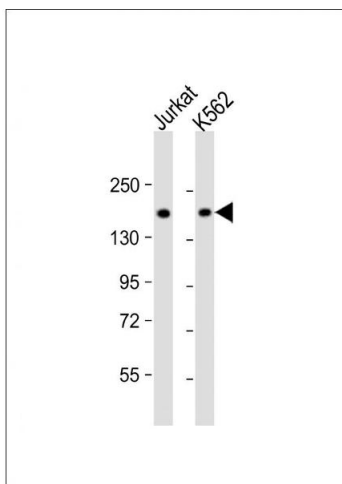
#### Immunohistochemistry (Paraffin-embedded Sections)

**Image 1.** Formalin-fixed and paraffin-embedded human skin with TOP2A Antibody (C-term), which was peroxidase-conjugated to the secondary antibody, followed by DAB staining. This data demonstrates the use of this antibody for immunohistochemistry, clinical relevance has not been evaluated.



#### Immunofluorescence

**Image 2.** Confocal immunofluorescent analysis of TOP2A Antibody (C-term) (ABIN653195 and ABIN2842744) with HeLa cells followed by Alexa Fluor 488-conjugated goat anti-rabbit IgG (green). DAPI was used to stain the cell nuclei (blue).



#### Western Blotting

**Image 3.** All lanes : Anti-TOP2A Antibody (C-term) at 1:1000 dilution Lane 1: Jurkat whole cell lysate Lane 2: K562 whole cell lysate Lysates/proteins at 20 µg per lane. Secondary Goat Anti-Rabbit IgG, (H+L), Peroxidase conjugated at 1/10000 dilution. Predicted band size : 174 kDa Blocking/Dilution buffer: 5 % NFDN/TBST.

Please check the [product details page](#) for more images. Overall 4 images are available for ABIN653195.