



[Go to Product page](#)

Datasheet for ABIN653198  
**anti-WDR37 antibody (C-Term)**

3 Images

Overview

Quantity:	400 µL
Target:	WDR37
Binding Specificity:	AA 426-455, C-Term
Reactivity:	Human
Host:	Rabbit
Clonality:	Polyclonal
Conjugate:	This WDR37 antibody is un-conjugated
Application:	Western Blotting (WB), Flow Cytometry (FACS), Immunohistochemistry (Paraffin-embedded Sections) (IHC (p))

Product Details

Immunogen:	This WDR37 antibody is generated from rabbits immunized with a KLH conjugated synthetic peptide between 426-455 amino acids from the C-terminal region of human WDR37.
Clone:	RB24704
Isotype:	Ig Fraction
Predicted Reactivity:	M
Purification:	This antibody is purified through a protein A column, followed by peptide affinity purification.

Target Details

Target:	WDR37
---------	-------

## Target Details

---

Alternative Name:	WDR37 ( <a href="#">WDR37 Products</a> )
Background:	WDR37 encodes a member of the WD repeat protein family. WD repeats are minimally conserved regions of approximately 40 amino acids typically bracketed by gly-his and trp-asp (GH-WD), which may facilitate formation of heterotrimeric or multiprotein complexes.
Molecular Weight:	54665
Gene ID:	22884
NCBI Accession:	<a href="#">NP_054742</a>
UniProt:	<a href="#">Q9Y2I8</a>

## Application Details

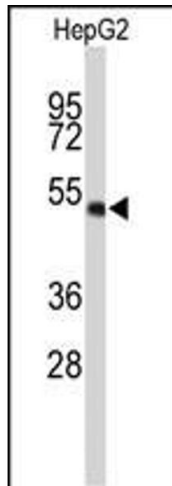
---

Application Notes:	WB: 1:1000. IHC-P: 1:50~100. FC: 1:10~50
Restrictions:	For Research Use only

## Handling

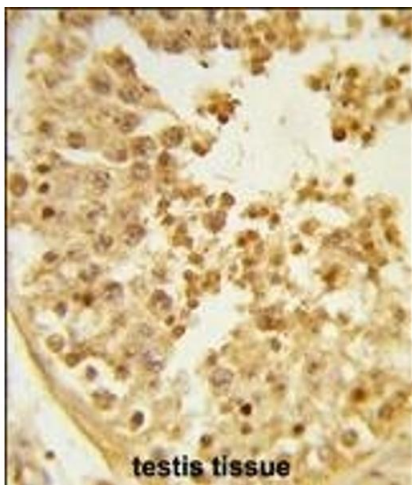
---

Format:	Liquid
Buffer:	Purified polyclonal antibody supplied in PBS with 0.09 % (W/V) sodium azide.
Preservative:	Sodium azide
Precaution of Use:	This product contains Sodium azide: a POISONOUS AND HAZARDOUS SUBSTANCE which should be handled by trained staff only.
Storage:	4 °C,-20 °C
Storage Comment:	Maintain refrigerated at 2-8 °C for up to 6 months. For long term storage store at -20 °C in small aliquots to prevent freeze-thaw cycles.
Expiry Date:	6 months



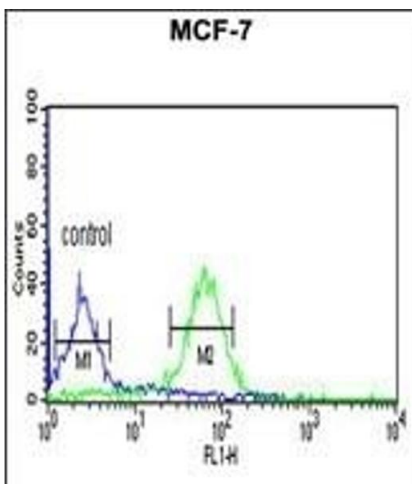
### Western Blotting

**Image 1.** Western blot analysis of WDR37 Antibody (C-term) (ABIN653198 and ABIN2842745) in HepG2 cell line lysates (35 µg/lane). WDR37 (arrow) was detected using the purified Pab.



### Immunohistochemistry (Paraffin-embedded Sections)

**Image 2.** Formalin-fixed and paraffin-embedded human testis tissue reacted with WDR37 Antibody (C-term), which was peroxidase-conjugated to the secondary antibody, followed by DAB staining. This data demonstrates the use of this antibody for immunohistochemistry, clinical relevance has not been evaluated.



### Flow Cytometry

**Image 3.** WDR37 Antibody (C-term) (ABIN653198 and ABIN2842745) flow cytometric analysis of MCF-7 cells (right histogram) compared to a negative control cell (left histogram). FITC-conjugated goat-anti-rabbit secondary antibodies were used for the analysis.