

Datasheet for ABIN653200

**anti-Phospholipase C beta 2 antibody (N-Term)****3** Images[Go to Product page](#)

## Overview

Quantity:	400 µL
Target:	Phospholipase C beta 2 (PLCb2)
Binding Specificity:	AA 174-202, N-Term
Reactivity:	Human
Host:	Rabbit
Clonality:	Polyclonal
Conjugate:	This Phospholipase C beta 2 antibody is un-conjugated
Application:	Western Blotting (WB), Flow Cytometry (FACS), Immunohistochemistry (Paraffin-embedded Sections) (IHC (p))

## Product Details

Immunogen:	This PLCB2 antibody is generated from rabbits immunized with a KLH conjugated synthetic peptide between 174-202 amino acids from the N-terminal region of human PLCB2.
Clone:	RB17392
Isotype:	Ig Fraction
Purification:	This antibody is prepared by Saturated Ammonium Sulfate (SAS) precipitation followed by dialysis against PBS.

## Target Details

Target:	Phospholipase C beta 2 (PLCb2)
Alternative Name:	PLCB2 ( <a href="#">PLCb2 Products</a> )

## Target Details

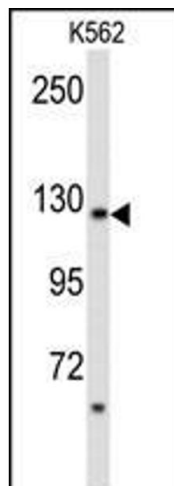
Background:	PLCB2 is the production of the second messenger molecules diacylglycerol (DAG) and inositol 1,4,5-trisphosphate (IP3) is mediated by activated phosphatidylinositol-specific phospholipase C enzymes.
Molecular Weight:	134024
Gene ID:	5330
NCBI Accession:	<a href="#">NP_004564</a>
UniProt:	<a href="#">Q00722</a>
Pathways:	<a href="#">WNT Signaling</a> , <a href="#">Thyroid Hormone Synthesis</a> , <a href="#">CXCR4-mediated Signaling Events</a> , <a href="#">G-protein mediated Events</a> , <a href="#">Thromboxane A2 Receptor Signaling</a>

## Application Details

Application Notes:	WB: 1:1000. IHC-P: 1:50~100. FC: 1:10~50
Restrictions:	For Research Use only

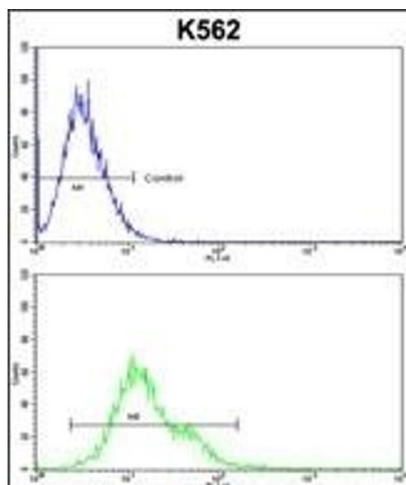
## Handling

Format:	Liquid
Buffer:	Purified polyclonal antibody supplied in PBS with 0.09 % (W/V) sodium azide.
Preservative:	Sodium azide
Precaution of Use:	This product contains Sodium azide: a POISONOUS AND HAZARDOUS SUBSTANCE which should be handled by trained staff only.
Storage:	4 °C,-20 °C
Storage Comment:	Maintain refrigerated at 2-8 °C for up to 6 months. For long term storage store at -20 °C in small aliquots to prevent freeze-thaw cycles.
Expiry Date:	6 months



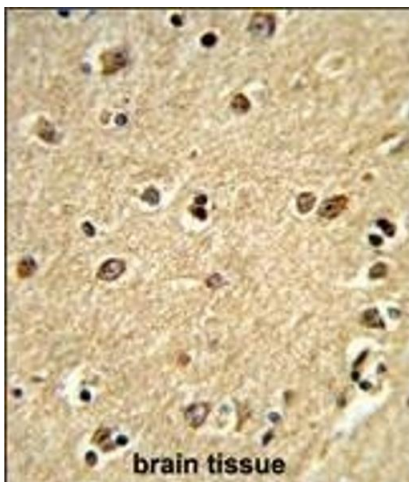
### Western Blotting

**Image 1.** Western blot analysis of PLCB2 Antibody (N-term) (ABIN653200 and ABIN2842746) in K562 cell line lysates (35 µg/lane). PLCB2 (arrow) was detected using the purified Pab.



### Flow Cytometry

**Image 2.** PLCB2 Antibody (N-term) (ABIN653200 and ABIN2842746) flow cytometric analysis of k562 cells (bottom histogram) compared to a negative control cell (top histogram). FITC-conjugated goat-anti-rabbit secondary antibodies were used for the analysis.



### Immunohistochemistry (Paraffin-embedded Sections)

**Image 3.** Formalin-fixed and paraffin-embedded human brain tissue reacted with PLCB2 Antibody (N-term), which was peroxidase-conjugated to the secondary antibody, followed by DAB staining. This data demonstrates the use of this antibody for immunohistochemistry, clinical relevance has not been evaluated.