

Datasheet for ABIN653206  
**anti-MEF2A antibody (AA 453-479)**[Go to Product page](#)

## 3 Images

## Overview

|                      |   |
|----------------------|---|
| Quantity:            | 400 µL  |
| Target:              | MEF2A   |
| Binding Specificity: | AA 453-479  |
| Reactivity:          | Human, Mouse  |
| Host:                | Rabbit  |
| Clonality:           | Polyclonal  |
| Conjugate:           | This MEF2A antibody is un-conjugated  |
| Application:         | Western Blotting (WB), Immunofluorescence (IF), Immunohistochemistry (Paraffin-embedded Sections) (IHC (p)) |

## Product Details

|                       |   |
|-----------------------|---|
| Immunogen:            | This MEF2A antibody is generated from rabbits immunized with a KLH conjugated synthetic peptide between 453-479 amino acids from the Central region of human MEF2A. |
| Clone:                | RB21291   |
| Isotype:              | Ig Fraction   |
| Predicted Reactivity: | B, Pig, Rat   |
| Purification:         | This antibody is purified through a protein A column, followed by peptide affinity purification.  |

## Target Details

|         |       |
|---------|-------|
| Target: | MEF2A |
|---------|-------|

## Target Details

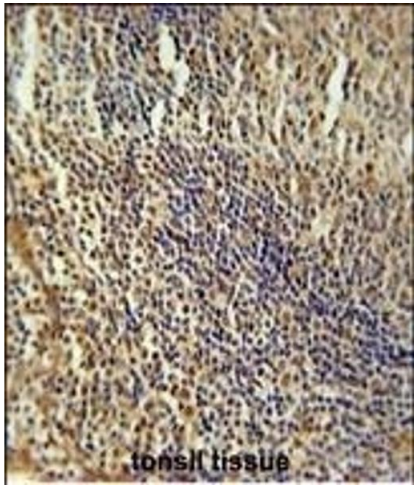
|                   |   |
|-------------------|---|
| Alternative Name: | MEF2A ( <a href="#">MEF2A Products</a> )  |
| Background:       | MEF2A is a DNA-binding transcription factor that activates many muscle-specific, growth factor-induced, and stress-induced genes. The encoded protein can act as a homodimer or as a heterodimer and is involved in several cellular processes, including muscle development, neuronal differentiation, cell growth control, and apoptosis. Defects in this protein could be a cause of autosomal dominant coronary artery disease 1 with myocardial infarction (ADCAD1). |
| Molecular Weight: | 54811   |
| Gene ID:          | 4205  |
| NCBI Accession:   | <a href="#">NP_001124398</a> , <a href="#">NP_001124399</a> , <a href="#">NP_001124400</a> , <a href="#">NP_001165365</a> , <a href="#">NP_005578</a>   |
| UniProt:          | <a href="#">Q02078</a>  |
| Pathways:         | <a href="#">Neurotrophin Signaling Pathway</a> , <a href="#">Activation of Innate immune Response</a> , <a href="#">Carbohydrate Homeostasis</a> , <a href="#">Chromatin Binding</a> , <a href="#">Regulation of Muscle Cell Differentiation</a> , <a href="#">Toll-Like Receptors Cascades</a>   |

## Application Details

|                    |  |
|--------------------|--|
| Application Notes: | IF: 1:10~50. WB: 1:1000. IHC-P: 1:50~100 |
| Restrictions:      | For Research Use only                    |

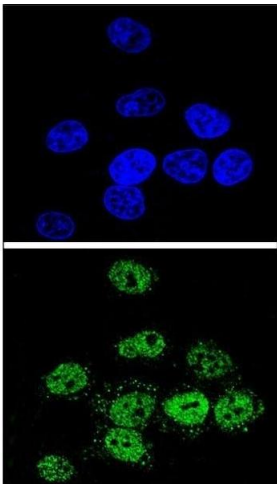
## Handling

|                    |  |
|--------------------|--|
| Format:            | Liquid   |
| Buffer:            | Purified polyclonal antibody supplied in PBS with 0.09 % (W/V) sodium azide.   |
| Preservative:      | Sodium azide   |
| Precaution of Use: | This product contains Sodium azide: a POISONOUS AND HAZARDOUS SUBSTANCE which should be handled by trained staff only.                     |
| Storage:           | 4 °C, -20 °C   |
| Storage Comment:   | Maintain refrigerated at 2-8 °C for up to 6 months. For long term storage store at -20 °C in small aliquots to prevent freeze-thaw cycles. |
| Expiry Date:       | 6 months   |



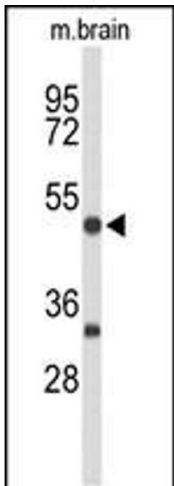
**Immunohistochemistry (Paraffin-embedded Sections)**

**Image 1.** MEF2A Antibody (Center) (ABIN653206 and ABIN2842748) immunohistochemistry analysis in formalin fixed and paraffin embedded human tonsil tissue followed by peroxidase conjugation of the secondary antibody and DAB staining. This data demonstrates the use of the MEF2A Antibody (Center) for immunohistochemistry. Clinical relevance has not been evaluated.



**Immunofluorescence**

**Image 2.** Confocal immunofluorescent analysis of MEF2A Antibody (Center) (ABIN653206 and ABIN2842748) with HeLa cell followed by Alexa Fluor® 488-conjugated goat anti-rabbit IgG (green). DAPI was used to stain the cell nuclear (blue).



**Western Blotting**

**Image 3.** Western blot analysis of MEF2A Antibody (Center) (ABIN653206 and ABIN2842748) in mouse brain tissue lysates (35 µg/lane). MEF2A (arrow) was detected using the purified Pab.