

Datasheet for ABIN653207  
**anti-RECK antibody (AA 430-456)**[Go to Product page](#)

## 3 Images

## Overview

Quantity:	400 µL
Target:	RECK
Binding Specificity:	AA 430-456
Reactivity:	Human
Host:	Rabbit
Clonality:	Polyclonal
Conjugate:	This RECK antibody is un-conjugated
Application:	Western Blotting (WB), Flow Cytometry (FACS), Immunohistochemistry (Paraffin-embedded Sections) (IHC (p))

## Product Details

Immunogen:	This RECK antibody is generated from rabbits immunized with a KLH conjugated synthetic peptide between 430-456 amino acids from the Central region of human RECK.
Clone:	RB22330
Isotype:	Ig Fraction
Purification:	This antibody is purified through a protein A column, followed by peptide affinity purification.

## Target Details

Target:	RECK
Alternative Name:	RECK ( <a href="#">RECK Products</a> )

## Target Details

**Background:** RECK is a cysteine-rich, extracellular protein with protease inhibitor-like domains whose expression is suppressed strongly in many tumors and cells transformed by various kinds of oncogenes. In normal cells, this membrane-anchored glycoprotein may serve as a negative regulator for matrix metalloproteinase-9, a key enzyme involved in tumor invasion and metastasis.

**Molecular Weight:** 106457

**Gene ID:** 8434

**NCBI Accession:** [NP\\_066934](#)

**UniProt:** [O95980](#)

## Application Details

**Application Notes:** WB: 1:1000. IHC-P: 1:10~50. FC: 1:10~50

**Restrictions:** For Research Use only

## Handling

**Format:** Liquid

**Buffer:** Purified polyclonal antibody supplied in PBS with 0.09 % (W/V) sodium azide.

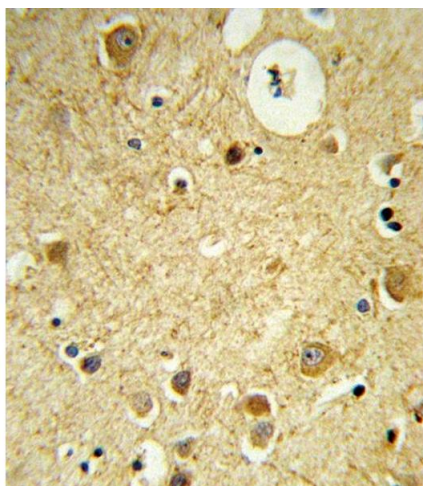
**Preservative:** Sodium azide

**Precaution of Use:** This product contains Sodium azide: a POISONOUS AND HAZARDOUS SUBSTANCE which should be handled by trained staff only.

**Storage:** 4 °C,-20 °C

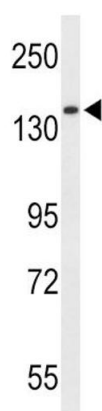
**Storage Comment:** Maintain refrigerated at 2-8 °C for up to 6 months. For long term storage store at -20 °C in small aliquots to prevent freeze-thaw cycles.

**Expiry Date:** 6 months



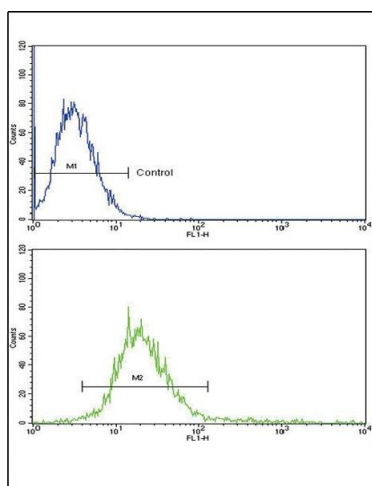
#### Immunohistochemistry (Paraffin-embedded Sections)

**Image 1.** Formalin-fixed and paraffin-embedded human brain tissue reacted with RECK Antibody (Center), which was peroxidase-conjugated to the secondary antibody, followed by DAB staining. This data demonstrates the use of this antibody for immunohistochemistry, clinical relevance has not been evaluated.



#### Western Blotting

**Image 2.** Western blot analysis of RECK Antibody (Center) (ABIN653207 and ABIN2842749) in HepG2 cell line lysates (35 µg/lane). RECK (arrow) was detected using the purified Pab.



#### Flow Cytometry

**Image 3.** RECK Antibody (Center) (ABIN653207 and ABIN2842749) flow cytometric analysis of k562 cells (bottom histogram) compared to a negative control cell (top histogram). FITC-conjugated goat-anti-rabbit secondary antibodies were used for the analysis.