

Datasheet for ABIN653210  
**anti-C7 antibody (Center)**

## 3 Images

[Go to Product page](#)

## Overview

Quantity:	400 µL
Target:	C7
Binding Specificity:	AA 375-403, Center
Reactivity:	Human
Host:	Rabbit
Clonality:	Polyclonal
Conjugate:	This C7 antibody is un-conjugated
Application:	Western Blotting (WB), Flow Cytometry (FACS), Immunohistochemistry (Paraffin-embedded Sections) (IHC (p))

## Product Details

Immunogen:	This C7 antibody is generated from rabbits immunized with a KLH conjugated synthetic peptide between 375-403 AA from the Central region of human C7.
Clone:	RB22516
Isotype:	Ig Fraction
Specificity:	This C7 antibody is generated from rabbits immunized with a KLH conjugated synthetic peptide between 381~411 amino acids from the Center region of human C7.
Purification:	This antibody is purified through a protein A column, followed by peptide affinity purification.

## Target Details

Target:	C7
---------	----

## Target Details

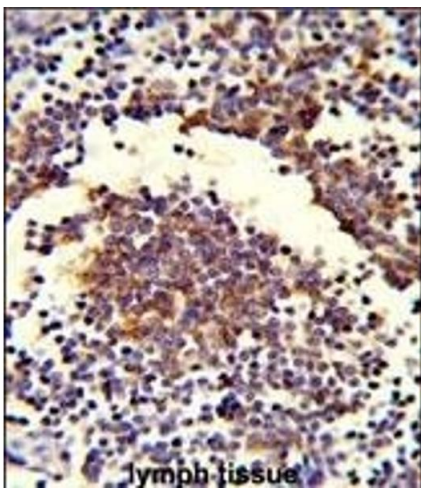
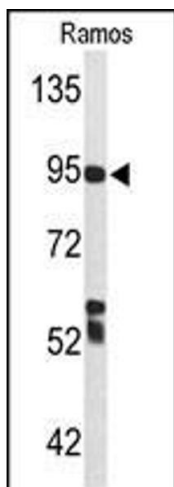
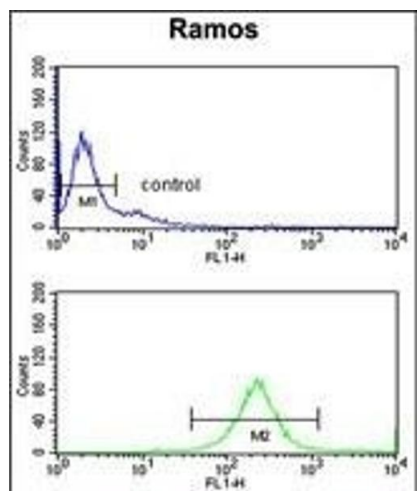
Alternative Name:	C7 ( <a href="#">C7 Products</a> )
Background:	C7 is a component of the complement system. It participates in the formation of Membrane Attack Complex (MAC). People with C7 deficiency are prone to bacterial infection. Synonyms: Complement component C7, C7
Molecular Weight:	93518 DA
Gene ID:	730
UniProt:	<a href="#">P10643</a>
Pathways:	<a href="#">Complement System</a>

## Application Details

Application Notes:	WB = 1:1000, IHC (p) = 1:50-100, FACS = 1:10-50
Restrictions:	For Research Use only

## Handling

Format:	Liquid
Concentration:	0.5 mg/mL
Buffer:	PBS with 0.09 % (W/V) sodium azide
Preservative:	Sodium azide
Precaution of Use:	This product contains sodium azide: a POISONOUS AND HAZARDOUS SUBSTANCE which should be handled by trained staff only.
Storage:	4 °C/-20 °C
Storage Comment:	Maintain refrigerated at 2-8 °C for up to 6 months. For long term storage store at -20 °C in small aliquots to prevent freeze-thaw cycles.
Expiry Date:	6 months



### Flow Cytometry

**Image 1.** C7 Antibody (Center) (ABIN653210 and ABIN2842751) flow cytometry analysis of Ramos cells (bottom histogram) compared to a negative control cell (top histogram). FITC-conjugated goat-anti-rabbit secondary antibodies were used for the analysis.

### Western Blotting

**Image 2.** Western blot analysis of C7 Antibody (Center) (ABIN653210 and ABIN2842751) in Ramos cell line lysates (35 µg/lane). C7 (arrow) was detected using the purified Pab.

### Immunohistochemistry (Paraffin-embedded Sections)

**Image 3.** Formalin-fixed and paraffin-embedded human lymph tissue reacted with C7 Antibody (Center), which was peroxidase-conjugated to the secondary antibody, followed by DAB staining. This data demonstrates the use of this antibody for immunohistochemistry, clinical relevance has not been evaluated.