

Datasheet for ABIN653217
anti-FBLN4 antibody (C-Term)[Go to Product page](#)

3 Images

Overview

Quantity:	400 µL
Target:	FBLN4
Binding Specificity:	AA 386-414, C-Term
Reactivity:	Human, Mouse
Host:	Rabbit
Clonality:	Polyclonal
Conjugate:	This FBLN4 antibody is un-conjugated
Application:	Western Blotting (WB), Flow Cytometry (FACS)

Product Details

Immunogen:	This EFEMP2 antibody is generated from rabbits immunized with a KLH conjugated synthetic peptide between 386-414 amino acids from the C-terminal region of human EFEMP2.
Clone:	RB22604
Isotype:	Ig Fraction
Predicted Reactivity:	Ha
Purification:	This antibody is purified through a protein A column, followed by peptide affinity purification.

Target Details

Target:	FBLN4
Alternative Name:	EFEMP2 (FBLN4 Products)

Target Details

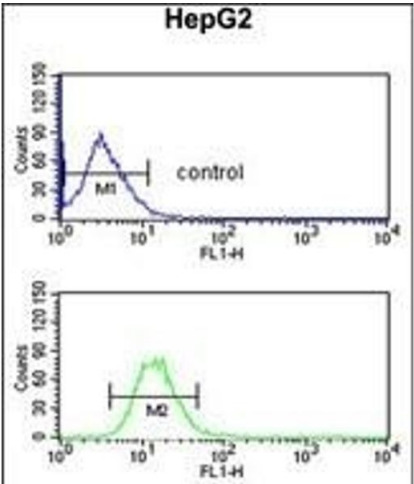
Background:	EFEMP2 have been found to contain variations of the epidermal growth factor (EGF) domain and have been implicated in functions as diverse as blood coagulation, activation of complement and determination of cell fate during development. The protein contains four EGF2 domains and six calcium-binding EGF2 domains. This protein is necessary for elastic fiber formation and connective tissue development.
Molecular Weight:	49405
Gene ID:	30008
NCBI Accession:	NP_058634
UniProt:	O95967

Application Details

Application Notes:	WB: 1:1000. WB: 1:1000. FC: 1:10~50
Restrictions:	For Research Use only

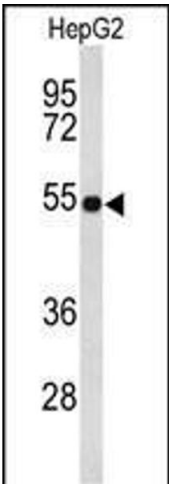
Handling

Format:	Liquid
Buffer:	Purified polyclonal antibody supplied in PBS with 0.09 % (W/V) sodium azide.
Preservative:	Sodium azide
Precaution of Use:	This product contains Sodium azide: a POISONOUS AND HAZARDOUS SUBSTANCE which should be handled by trained staff only.
Storage:	4 °C,-20 °C
Storage Comment:	Maintain refrigerated at 2-8 °C for up to 6 months. For long term storage store at -20 °C in small aliquots to prevent freeze-thaw cycles.
Expiry Date:	6 months



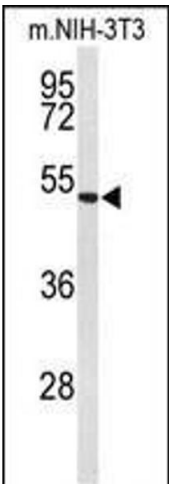
Flow Cytometry

Image 1. EFE Antibody (C-term) (ABIN653217 and ABIN2842753) flow cytometric analysis of HepG2 cells (bottom histogram) compared to a negative control cell (top histogram). FITC-conjugated goat-anti-rabbit secondary antibodies were used for the analysis.



Western Blotting

Image 2. Western blot analysis of EFE Antibody (C-term) (ABIN653217 and ABIN2842753) in HepG2 cell line lysates (35 µg/lane). EFE (arrow) was detected using the purified Pab,



Western Blotting

Image 3. Western blot analysis of EFE Antibody (C-term) (ABIN653217 and ABIN2842753) in mouse NIH-3T3 cell line lysates (35 µg/lane). EFE (arrow) was detected using the purified Pab.