

Datasheet for ABIN653221
anti-KCTD12 antibody (AA 242-269)[Go to Product page](#)

3 Images

Overview

Quantity:	400 µL
Target:	KCTD12
Binding Specificity:	AA 242-269
Reactivity:	Human
Host:	Rabbit
Clonality:	Polyclonal
Conjugate:	This KCTD12 antibody is un-conjugated
Application:	Western Blotting (WB), Flow Cytometry (FACS), Immunohistochemistry (Paraffin-embedded Sections) (IHC (p))

Product Details

Immunogen:	This KCTD12 antibody is generated from rabbits immunized with a KLH conjugated synthetic peptide between 242-269 amino acids from the Central region of human KCTD12.
Clone:	RB22804
Isotype:	IgG
Predicted Reactivity:	M
Purification:	This antibody is purified through a protein A column, followed by peptide affinity purification.

Target Details

Target:	KCTD12
---------	--------

Target Details

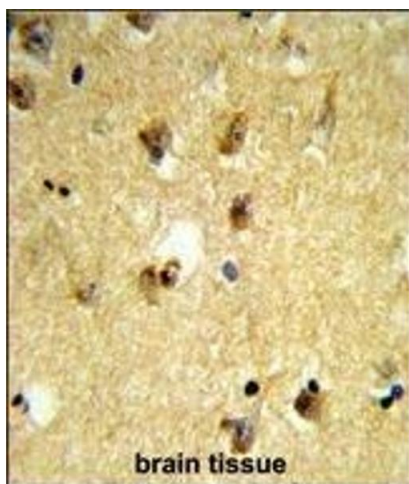
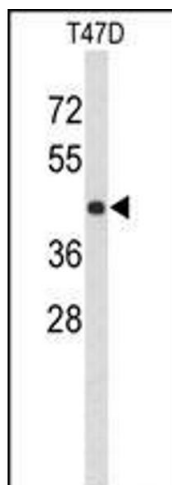
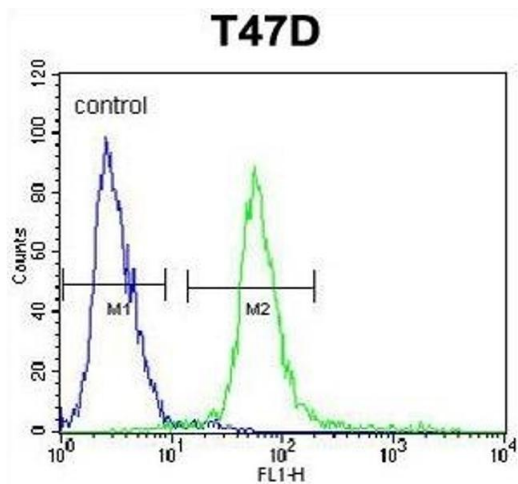
Alternative Name:	KCTD12 (KCTD12 Products)
Gene ID:	115207
NCBI Accession:	NP_612453
UniProt:	Q96CX2
Pathways:	Synaptic Membrane , Regulation of G-Protein Coupled Receptor Protein Signaling

Application Details

Application Notes:	WB: 1:1000. IHC-P: 1:50~100. FC: 1:10~50
Restrictions:	For Research Use only

Handling

Format:	Liquid
Buffer:	Purified polyclonal antibody supplied in PBS with 0.09 % (W/V) sodium azide.
Preservative:	Sodium azide
Precaution of Use:	This product contains Sodium azide: a POISONOUS AND HAZARDOUS SUBSTANCE which should be handled by trained staff only.
Storage:	4 °C, -20 °C
Storage Comment:	Maintain refrigerated at 2-8 °C for up to 6 months. For long term storage store at -20 °C in small aliquots to prevent freeze-thaw cycles.
Expiry Date:	6 months



Flow Cytometry

Image 1. KCTD12 Antibody (Center) (ABIN653221 and ABIN2842756) flow cytometric analysis of T47D cells (right histogram) compared to a negative control (left histogram). FITC-conjugated goat-anti-rabbit secondary antibodies were used for the analysis.

Western Blotting

Image 2. Western blot analysis of KCTD12 Antibody (Center) (ABIN653221 and ABIN2842756) in T47D cell line lysates (35 µg/lane). KCTD12 (arrow) was detected using the purified Pab.

Immunohistochemistry (Paraffin-embedded Sections)

Image 3. Formalin-fixed and paraffin-embedded human brain tissue reacted with KCTD12 Antibody (Center), which was peroxidase-conjugated to the secondary antibody, followed by DAB staining. This data demonstrates the use of this antibody for immunohistochemistry, clinical relevance has not been evaluated.