



[Go to Product page](#)

Datasheet for ABIN653222

anti-C19orf26 antibody (AA 423-450)

2 Images

Overview

Quantity:	400 µL
Target:	C19orf26 (C19ORF26)
Binding Specificity:	AA 423-450
Reactivity:	Human
Host:	Rabbit
Clonality:	Polyclonal
Conjugate:	This C19orf26 antibody is un-conjugated
Application:	Western Blotting (WB), Flow Cytometry (FACS)

Product Details

Immunogen:	This C19orf26 antibody is generated from rabbits immunized with a KLH conjugated synthetic peptide between 423-450 amino acids from the Central region of human C19orf26.
Clone:	RB23074
Isotype:	Ig Fraction
Purification:	This antibody is purified through a protein A column, followed by peptide affinity purification.

Target Details

Target:	C19orf26 (C19ORF26)
Alternative Name:	C19orf26 (C19ORF26 Products)
Molecular Weight:	73929

Target Details

Gene ID: 255057

NCBI Accession: [NP_689982](#)

UniProt: [Q8N350](#)

Application Details

Application Notes: WB: 1:1000. FC: 1:10~50

Restrictions: For Research Use only

Handling

Format: Liquid

Buffer: Purified polyclonal antibody supplied in PBS with 0.09 % (W/V) sodium azide.

Preservative: Sodium azide

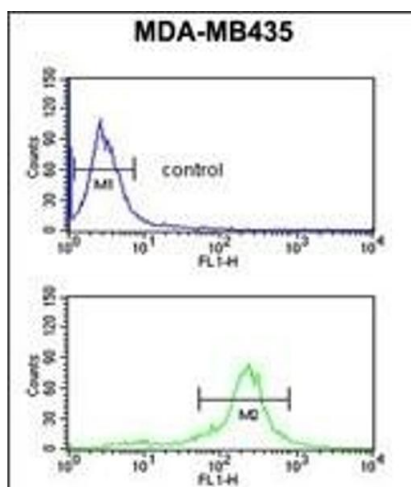
Precaution of Use: This product contains Sodium azide: a POISONOUS AND HAZARDOUS SUBSTANCE which should be handled by trained staff only.

Storage: 4 °C, -20 °C

Storage Comment: Maintain refrigerated at 2-8 °C for up to 6 months. For long term storage store at -20 °C in small aliquots to prevent freeze-thaw cycles.

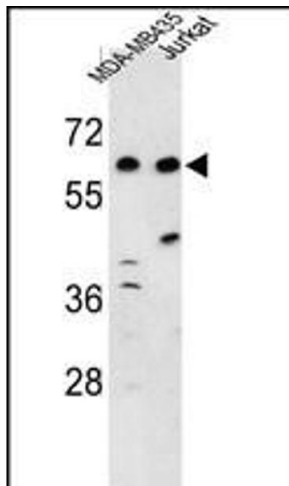
Expiry Date: 6 months

Images



Flow Cytometry

Image 1. C19orf26 Antibody (Center) (ABIN653222 and ABIN2842757) flow cytometric analysis of MDA-M cells (bottom histogram) compared to a negative control cell (top histogram). FITC-conjugated goat-anti-rabbit secondary antibodies were used for the analysis.



Western Blotting

Image 2. Western blot analysis of C19orf26 Antibody (Center) (ABIN653222 and ABIN2842757) in MDA-M, Jurkat cell line lysates (35 µg/lane). C19orf26 (arrow) was detected using the purified Pab.