

Datasheet for ABIN653230
anti-GFPT2 antibody (AA 175-201)[Go to Product page](#)

3 Images

Overview

Quantity:	400 µL
Target:	GFPT2
Binding Specificity:	AA 175-201
Reactivity:	Human
Host:	Rabbit
Clonality:	Polyclonal
Conjugate:	This GFPT2 antibody is un-conjugated
Application:	Western Blotting (WB), Flow Cytometry (FACS), Immunohistochemistry (Paraffin-embedded Sections) (IHC (p))

Product Details

Immunogen:	This GFPT2 antibody is generated from rabbits immunized with a KLH conjugated synthetic peptide between 175-201 amino acids from the Central region of human GFPT2.
Clone:	RB23652
Isotype:	Ig Fraction
Predicted Reactivity:	B, M, Rat
Purification:	This antibody is purified through a protein A column, followed by peptide affinity purification.

Target Details

Target:	GFPT2
---------	-------

Target Details

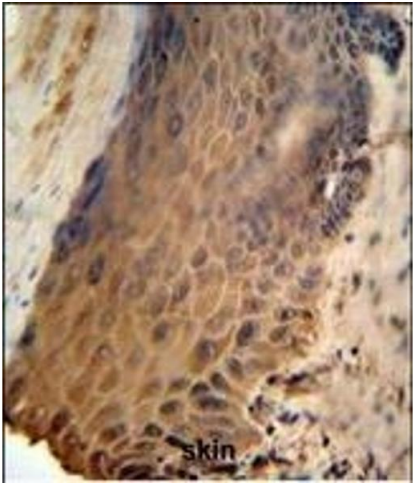
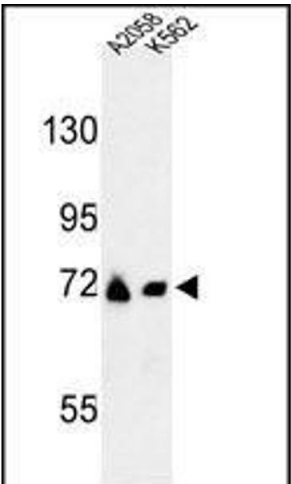
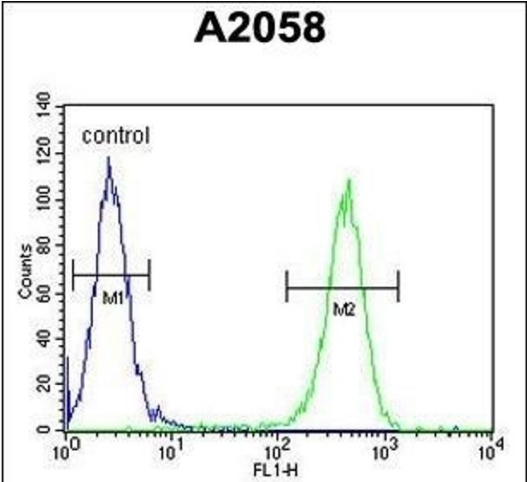
Alternative Name:	GFPT2 (GFPT2 Products)
Background:	GFPT2 controls the flux of glucose into the hexosamine pathway. This protein most likely involved in regulating the availability of precursors for N-and O-linked glycosylation of proteins.
Gene ID:	9945
NCBI Accession:	NP_005101
UniProt:	O94808

Application Details

Application Notes:	WB: 1:1000. IHC-P: 1:50~100. FC: 1:10~50
Restrictions:	For Research Use only

Handling

Format:	Liquid
Buffer:	Purified polyclonal antibody supplied in PBS with 0.09 % (W/V) sodium azide.
Preservative:	Sodium azide
Precaution of Use:	This product contains Sodium azide: a POISONOUS AND HAZARDOUS SUBSTANCE which should be handled by trained staff only.
Storage:	4 °C,-20 °C
Storage Comment:	Maintain refrigerated at 2-8 °C for up to 6 months. For long term storage store at -20 °C in small aliquots to prevent freeze-thaw cycles.
Expiry Date:	6 months



Flow Cytometry

Image 1. GFPT2 Antibody (Center) (ABIN653230 and ABIN2842763) flow cytometric analysis of cells (right histogram) compared to a negative control cell (left histogram). FITC-conjugated goat-anti-rabbit secondary antibodies were used for the analysis.

Western Blotting

Image 2. Western blot analysis of GFPT2 Antibody (Center) (ABIN653230 and ABIN2842763) in K562 cell line lysates (35 µg/lane). GFPT2 (arrow) was detected using the purified Pab.

Immunohistochemistry (Paraffin-embedded Sections)

Image 3. GFPT2 Antibody (Center) (ABIN653230 and ABIN2842763) IHC analysis in formalin fixed and paraffin embedded human skin followed by peroxidase conjugation of the secondary antibody and DAB staining. This data demonstrates the use of the GFPT2 Antibody (Center) for immunohistochemistry. Clinical relevance has not been evaluated.