

Datasheet for ABIN653231

**anti-Melatonin Receptor 1A antibody (AA 209-239)**[Go to Product page](#)**3** Images

## Overview

Quantity:	400 µL
Target:	Melatonin Receptor 1A (MTNR1A)
Binding Specificity:	AA 209-239
Reactivity:	Human
Host:	Rabbit
Clonality:	Polyclonal
Conjugate:	This Melatonin Receptor 1A antibody is un-conjugated
Application:	Western Blotting (WB), Flow Cytometry (FACS)

## Product Details

Immunogen:	This MTNR1A antibody is generated from rabbits immunized with a KLH conjugated synthetic peptide between 209-239 amino acids from the Central region of human MTNR1A.
Clone:	RB23653
Isotype:	Ig Fraction
Purification:	This antibody is purified through a protein A column, followed by peptide affinity purification.

## Target Details

Target:	Melatonin Receptor 1A (MTNR1A)
Alternative Name:	MTNR1A ( <a href="#">MTNR1A Products</a> )
Background:	MTNR1A encodes one of two high affinity forms of a receptor for melatonin, the primary

## Target Details

hormone secreted by the pineal gland. This receptor is a G-protein coupled, 7-transmembrane receptor that is responsible for melatonin effects on mammalian circadian rhythm and reproductive alterations affected by day length. The receptor is an integral membrane protein that is readily detectable and localized to two specific regions of the brain. The hypothalamic suprachiasmatic nucleus appears to be involved in circadian rhythm while the hypophyseal pars tuberalis may be responsible for the reproductive effects of melatonin.

Molecular Weight: 39375

Gene ID: 4543

NCBI Accession: [NP\\_005949](#)

UniProt: [P48039](#)

## Application Details

Application Notes: WB: 1:500. WB: 1:1000. FC: 1:10~50

Restrictions: For Research Use only

## Handling

Format: Liquid

Buffer: Purified polyclonal antibody supplied in PBS with 0.09 % (W/V) sodium azide.

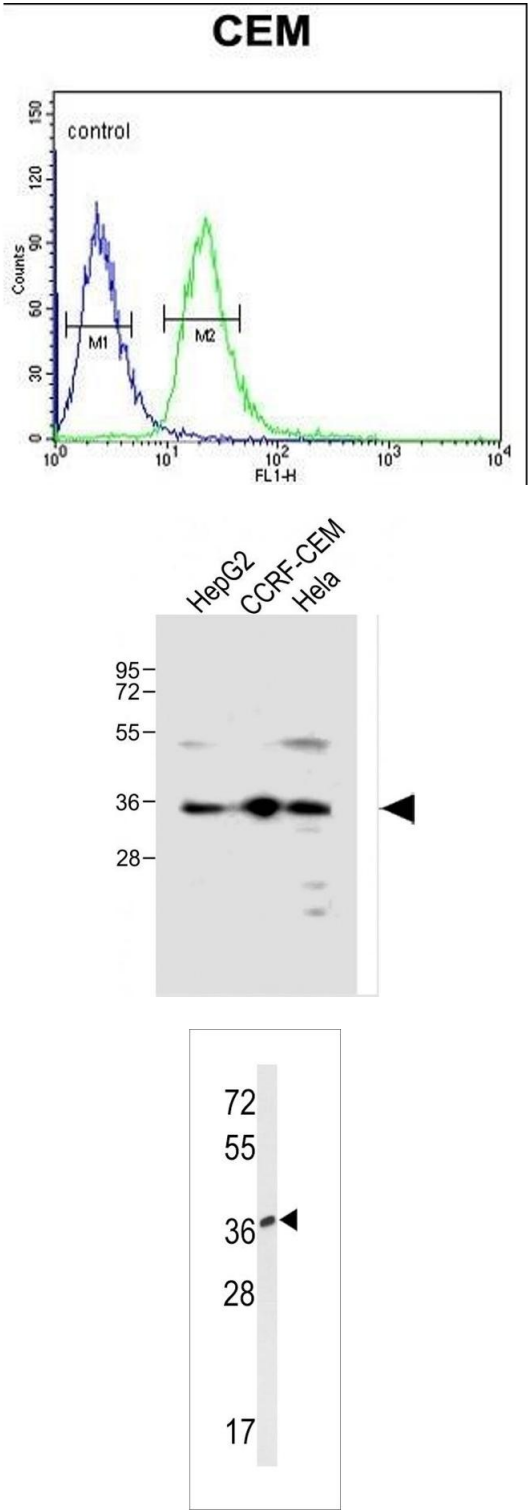
Preservative: Sodium azide

Precaution of Use: This product contains Sodium azide: a POISONOUS AND HAZARDOUS SUBSTANCE which should be handled by trained staff only.

Storage: 4 °C, -20 °C

Storage Comment: Maintain refrigerated at 2-8 °C for up to 6 months. For long term storage store at -20 °C in small aliquots to prevent freeze-thaw cycles.

Expiry Date: 6 months



Flow Cytometry

**Image 1.** MTNR1A Antibody (Center) (ABIN653231 and ABIN2842764) flow cytometric analysis of CEM cells (right histogram) compared to a negative control cell (left histogram).FITC-conjugated goat-anti-rabbit secondary antibodies were used for the analysis.

Western Blotting

**Image 2.** All lanes : Anti-MTNR1A Antibody (Center) at 1:500 dilution Lane 1: HepG2 whole cell lysate Lane 2: CCRF-CEM whole cell lysate Lane 3: Hela whole cell lysate Lysates/proteins at 20 µg per lane. Secondary Goat Anti-Rabbit IgG, (H+L), Peroxidase conjugated at 1/10000 dilution. Predicted band size : 36 kDa Blocking/Dilution buffer: 5 % NFDM/TBST.

Western Blotting

**Image 3.** Western blot analysis of MTNR1A Antibody (Center) (ABIN653231 and ABIN2842764) in CEM cell line lysates (35 µg/lane). MTNR1A (arrow) was detected using the purified Pab.