

Datasheet for ABIN653238  
**anti-ARGLU1 antibody (N-Term)**

## 3 Images

[Go to Product page](#)

## Overview

Quantity:	400 µL
Target:	ARGLU1
Binding Specificity:	AA 48-74, N-Term
Reactivity:	Human
Host:	Rabbit
Clonality:	Polyclonal
Conjugate:	This ARGLU1 antibody is un-conjugated
Application:	Western Blotting (WB), Flow Cytometry (FACS), Immunohistochemistry (Paraffin-embedded Sections) (IHC (p))

## Product Details

Immunogen:	This ARGLU1 antibody is generated from rabbits immunized with a KLH conjugated synthetic peptide between 48-74 amino acids from the N-terminal region of human ARGLU1.
Clone:	RB23842
Isotype:	Ig Fraction
Predicted Reactivity:	B
Purification:	This antibody is purified through a protein A column, followed by peptide affinity purification.

## Target Details

Target:	ARGLU1
---------	--------

## Target Details

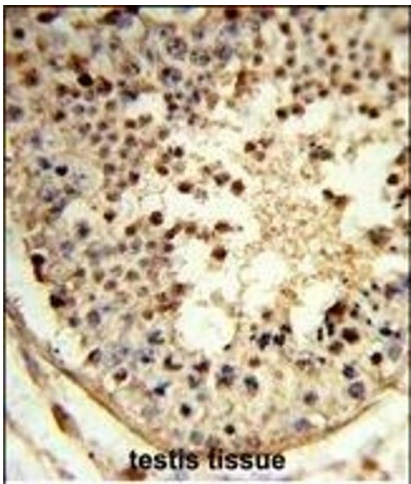
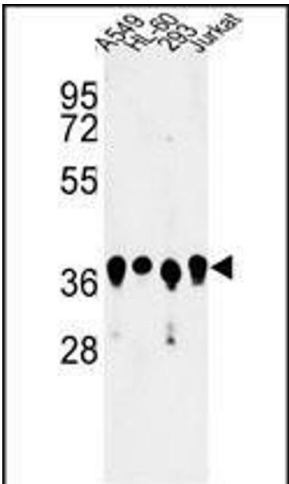
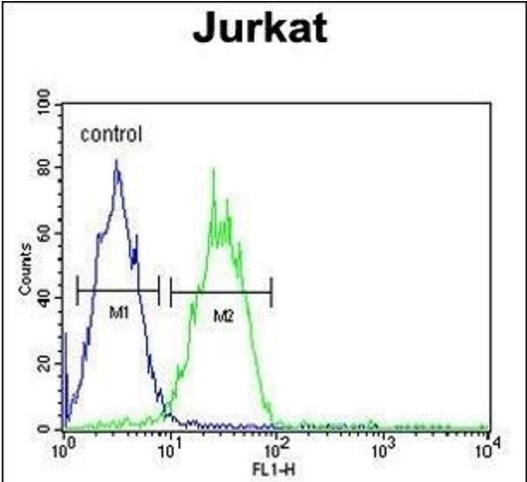
Alternative Name:	ARGLU1 ( <a href="#">ARGLU1 Products</a> )
Background:	ARGLU1 belongs to the UPF0430 family. There are two named isoforms.
Molecular Weight:	33216
Gene ID:	55082
NCBI Accession:	<a href="#">NP_060481</a>
UniProt:	<a href="#">Q9NWB6</a>

## Application Details

Application Notes:	WB: 1:1000. IHC-P: 1:50~100. FC: 1:10~50
Restrictions:	For Research Use only

## Handling

Format:	Liquid
Buffer:	Purified polyclonal antibody supplied in PBS with 0.09 % (W/V) sodium azide.
Preservative:	Sodium azide
Precaution of Use:	This product contains Sodium azide: a POISONOUS AND HAZARDOUS SUBSTANCE which should be handled by trained staff only.
Storage:	4 °C,-20 °C
Storage Comment:	Maintain refrigerated at 2-8 °C for up to 6 months. For long term storage store at -20 °C in small aliquots to prevent freeze-thaw cycles.
Expiry Date:	6 months



### Flow Cytometry

**Image 1.** ARGLU1 Antibody (N-term) (ABIN653238 and ABIN2842768) flow cytometric analysis of Jurkat cells (right histogram) compared to a negative control cell (left histogram). FITC-conjugated goat-anti-rabbit secondary antibodies were used for the analysis.

### Western Blotting

**Image 2.** Western blot analysis of ARGLU1 Antibody (N-term) (ABIN653238 and ABIN2842768) in A549, HL-60, 293, Jurkat cell line lysates (35 µg/lane). ARGLU1 (arrow) was detected using the purified Pab.

### Immunohistochemistry (Paraffin-embedded Sections)

**Image 3.** Formalin-fixed and paraffin-embedded human testis tissue reacted with ARGLU1 Antibody (N-term), which was peroxidase-conjugated to the secondary antibody, followed by DAB staining. This data demonstrates the use of this antibody for immunohistochemistry, clinical relevance has not been evaluated.