

Datasheet for ABIN653245
anti-GABRA2 antibody (C-Term)[Go to Product page](#)

3 Images

Overview

Quantity:	400 µL
Target:	GABRA2
Binding Specificity:	AA 378-406, C-Term
Reactivity:	Human
Host:	Rabbit
Clonality:	Polyclonal
Conjugate:	This GABRA2 antibody is un-conjugated
Application:	Western Blotting (WB), Flow Cytometry (FACS), Immunohistochemistry (Paraffin-embedded Sections) (IHC (p))

Product Details

Immunogen:	This GABRA2 antibody is generated from rabbits immunized with a KLH conjugated synthetic peptide between 378-406 amino acids from the C-terminal region of human GABRA2.
Clone:	RB23934
Isotype:	Ig Fraction
Predicted Reactivity:	B, M, Rat
Purification:	This antibody is purified through a protein A column, followed by peptide affinity purification.

Target Details

Target:	GABRA2
---------	--------

Target Details

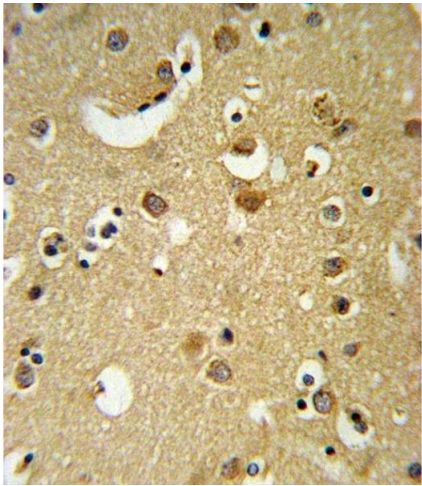
Alternative Name:	GABRA2 (GABRA2 Products)
Background:	GABRA2 is the major inhibitory neurotransmitter in the mammalian brain where it acts at GABA-A receptors, which are ligand-gated chloride channels. Chloride conductance of these channels can be modulated by agents such as benzodiazepines that bind to the GABA-A receptor. At least 16 distinct subunits of GABA-A receptors have been identified.
Molecular Weight:	51326
Gene ID:	2555
NCBI Accession:	NP_000798 , NP_001107647
UniProt:	P47869

Application Details

Application Notes:	WB: 1:1000. IHC-P: 1:10~50. FC: 1:10~50
Restrictions:	For Research Use only

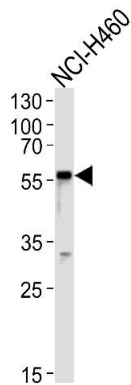
Handling

Format:	Liquid
Buffer:	Purified polyclonal antibody supplied in PBS with 0.09 % (W/V) sodium azide.
Preservative:	Sodium azide
Precaution of Use:	This product contains Sodium azide: a POISONOUS AND HAZARDOUS SUBSTANCE which should be handled by trained staff only.
Storage:	4 °C,-20 °C
Storage Comment:	Maintain refrigerated at 2-8 °C for up to 6 months. For long term storage store at -20 °C in small aliquots to prevent freeze-thaw cycles.
Expiry Date:	6 months



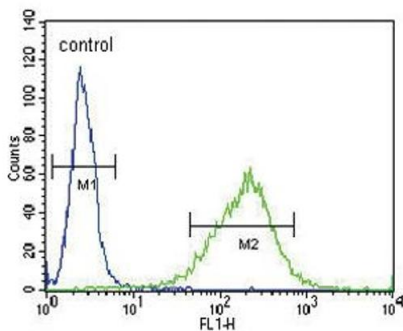
Immunohistochemistry (Paraffin-embedded Sections)

Image 1. GABRA2 Antibody (C-term) (ABIN653245 and ABIN2842770) IHC analysis in formalin fixed and paraffin embedded brain tissue followed by peroxidase conjugation of the secondary antibody and DAB staining. This data demonstrates the use of the GABRA2 Antibody (C-term) for immunohistochemistry. Clinical relevance has not been evaluated.



Western Blotting

Image 2. GABRA2 Antibody (C-term) (ABIN653245 and ABIN2842770) western blot analysis in NCI- cell line lysates (35 µg/lane). This demonstrates the GABRA2 antibody detected the GABRA2 protein (arrow).



Flow Cytometry

Image 3. GABRA2 Antibody (C-term) (ABIN653245 and ABIN2842770) flow cytometric analysis of NCI- cells (right histogram) compared to a negative control cell (left histogram). FITC-conjugated goat-anti-rabbit secondary antibodies were used for the analysis.