

Datasheet for ABIN653251

anti-RNASEH2C antibody (AA 80-108)**2** Images[Go to Product page](#)

Overview

Quantity:	400 µL
Target:	RNASEH2C
Binding Specificity:	AA 80-108
Reactivity:	Human
Host:	Rabbit
Clonality:	Polyclonal
Conjugate:	This RNASEH2C antibody is un-conjugated
Application:	Western Blotting (WB), Flow Cytometry (FACS)

Product Details

Immunogen:	This RNH2C antibody is generated from rabbits immunized with a KLH conjugated synthetic peptide between 80-108 amino acids from the Central region of human RNH2C.
Clone:	RB24752
Isotype:	Ig Fraction
Purification:	This antibody is purified through a protein A column, followed by peptide affinity purification.

Target Details

Target:	RNASEH2C
Alternative Name:	RNH2C (RNASEH2C Products)
Background:	RNH2C encodes a ribonuclease H subunit that can cleave ribonucleotides from RNA:DNA

Target Details

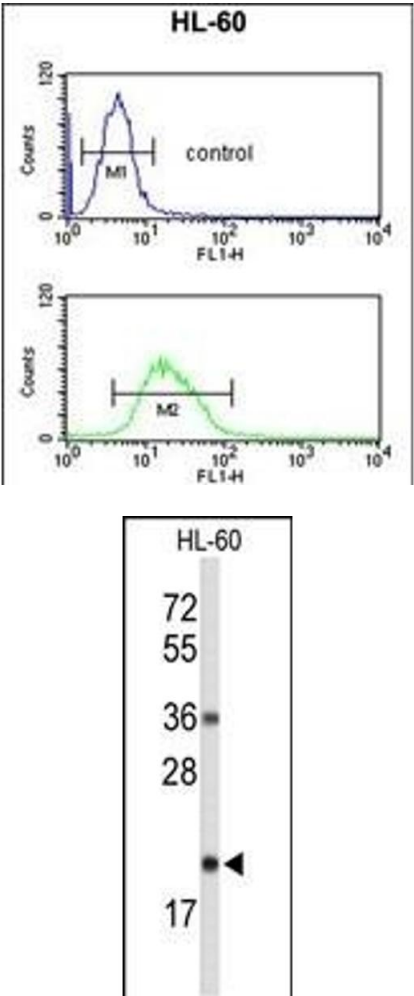
	duplexes.
Molecular Weight:	17840
Gene ID:	84153
NCBI Accession:	NP_115569
UniProt:	Q8TDP1

Application Details

Application Notes:	WB: 1:1000. FC: 1:10~50
Restrictions:	For Research Use only

Handling

Format:	Liquid
Buffer:	Purified polyclonal antibody supplied in PBS with 0.09 % (W/V) sodium azide.
Preservative:	Sodium azide
Precaution of Use:	This product contains Sodium azide: a POISONOUS AND HAZARDOUS SUBSTANCE which should be handled by trained staff only.
Storage:	4 °C,-20 °C
Storage Comment:	Maintain refrigerated at 2-8 °C for up to 6 months. For long term storage store at -20 °C in small aliquots to prevent freeze-thaw cycles.
Expiry Date:	6 months



Flow Cytometry

Image 1. RNH2C Antibody (Center) (ABIN653251 and ABIN2842775) flow cytometric analysis of HL-60 cells (bottom histogram) compared to a negative control cell (top histogram).FITC-conjugated goat-anti-rabbit secondary antibodies were used for the analysis.

Western Blotting

Image 2. Western blot analysis of RNH2C Antibody (Center) (ABIN653251 and ABIN2842775) in HL-60 cell line lysates (35 µg/lane). RNH2C(arrow) was detected using the purified Pab.