

Datasheet for ABIN653254
anti-SELT antibody (N-Term)[Go to Product page](#)

2 Images

Overview

Quantity:	400 µL
Target:	SELT
Binding Specificity:	AA 48-75, N-Term
Reactivity:	Human
Host:	Rabbit
Clonality:	Polyclonal
Conjugate:	This SELT antibody is un-conjugated
Application:	Western Blotting (WB), Flow Cytometry (FACS)

Product Details

Immunogen:	This SELT antibody is generated from rabbits immunized with a KLH conjugated synthetic peptide between 48-75 amino acids from the N-terminal region of human SELT.
Clone:	RB24793
Isotype:	IgG
Predicted Reactivity:	B, C, M, Rat
Purification:	This antibody is purified through a protein A column, followed by peptide affinity purification.

Target Details

Target:	SELT
Alternative Name:	SELT (SELT Products)

Target Details

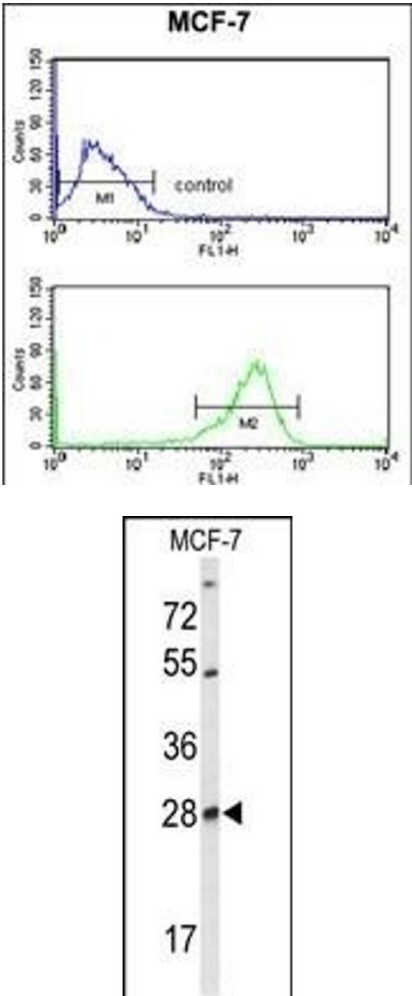
Background:	SELT encodes a selenoprotein, which contains a selenocysteine (Sec) residue at its active site. The selenocysteine is encoded by the UGA codon that normally signals translation termination. The 3' UTR of selenoprotein genes have a common stem-loop structure, the sec insertion sequence (SECIS), that is necessary for the recognition of UGA as a Sec codon rather than as a stop signal.
Molecular Weight:	22324
Gene ID:	51714
NCBI Accession:	NP_057359
UniProt:	P62341
Pathways:	Cell RedoxHomeostasis

Application Details

Application Notes:	WB: 1:1000. FC: 1:10~50
Restrictions:	For Research Use only

Handling

Format:	Liquid
Buffer:	Purified polyclonal antibody supplied in PBS with 0.09 % (W/V) sodium azide.
Preservative:	Sodium azide
Precaution of Use:	This product contains Sodium azide: a POISONOUS AND HAZARDOUS SUBSTANCE which should be handled by trained staff only.
Storage:	4 °C, -20 °C
Storage Comment:	Maintain refrigerated at 2-8 °C for up to 6 months. For long term storage store at -20 °C in small aliquots to prevent freeze-thaw cycles.
Expiry Date:	6 months



Flow Cytometry

Image 1. SELT Antibody (N-term) (ABIN653254 and ABIN2842777) flow cytometry analysis of MCF-7 cells (bottom histogram) compared to a negative control cell (top histogram). FITC-conjugated goat-anti-rabbit secondary antibodies were used for the analysis.

Western Blotting

Image 2. Western blot analysis of SELT Antibody (N-term) (ABIN653254 and ABIN2842777) in MCF-7 cell line lysates (35 µg/lane). SELT (arrow) was detected using the purified Pab.