

Datasheet for ABIN653273
anti-ENTPD2 antibody (N-Term)

5 Images

[Go to Product page](#)

Overview

Quantity:	400 µL
Target:	ENTPD2
Binding Specificity:	AA 86-113, N-Term
Reactivity:	Human
Host:	Rabbit
Clonality:	Polyclonal
Conjugate:	This ENTPD2 antibody is un-conjugated
Application:	Western Blotting (WB), Flow Cytometry (FACS), Immunohistochemistry (Paraffin-embedded Sections) (IHC (p))

Product Details

Immunogen:	This ENTPD2 antibody is generated from rabbits immunized with a KLH conjugated synthetic peptide between 86-113 amino acids from the N-terminal region of human ENTPD2.
Clone:	RB23779
Isotype:	Ig Fraction
Purification:	This antibody is purified through a protein A column, followed by peptide affinity purification.

Target Details

Target:	ENTPD2
Alternative Name:	ENTPD2 (ENTPD2 Products)

Target Details

Background: ENTPD2 is the type 2 enzyme of the ecto-nucleoside triphosphate diphosphohydrolase family (E-NTPDase). E-NTPDases are a family of ecto-nucleosidases that hydrolyze 5'-triphosphates. This ecto-ATPase is an integral membrane protein.

Molecular Weight: 53665

Gene ID: 954

NCBI Accession: [NP_001237](#), [NP_982293](#)

UniProt: [Q9Y5L3](#)

Application Details

Application Notes: WB: 1:2000. WB: 1:2000. WB: 1:1000. IHC-P: 1:50~100. FC: 1:25

Restrictions: For Research Use only

Handling

Format: Liquid

Buffer: Purified polyclonal antibody supplied in PBS with 0.09 % (W/V) sodium azide.

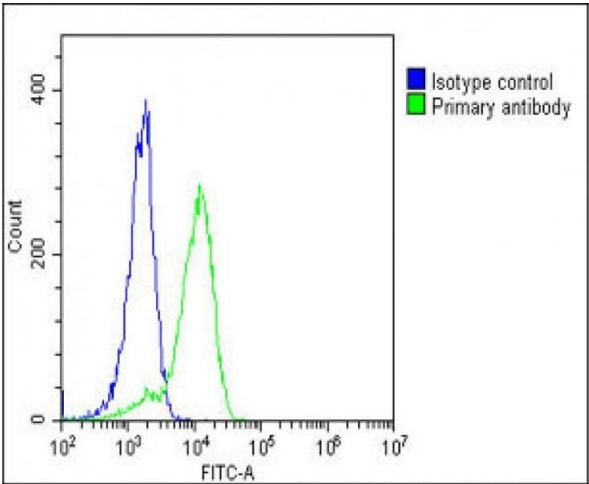
Preservative: Sodium azide

Precaution of Use: This product contains Sodium azide: a POISONOUS AND HAZARDOUS SUBSTANCE which should be handled by trained staff only.

Storage: 4 °C, -20 °C

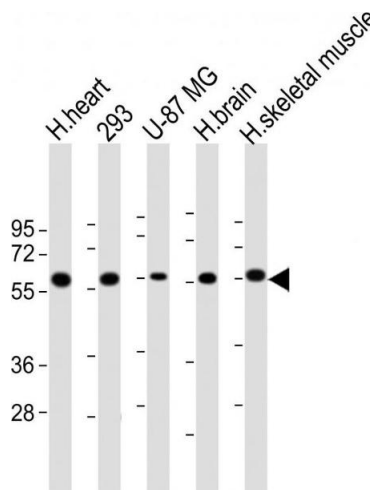
Storage Comment: Maintain refrigerated at 2-8 °C for up to 6 months. For long term storage store at -20 °C in small aliquots to prevent freeze-thaw cycles.

Expiry Date: 6 months



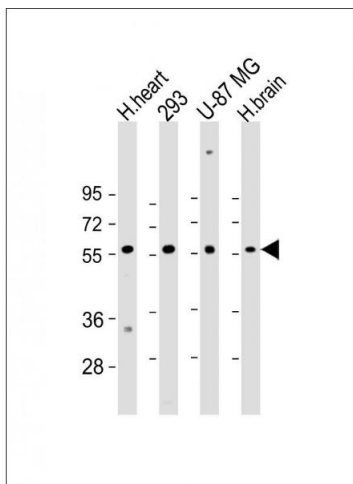
Flow Cytometry

Image 1. Overlay histogram showing K562 cells stained with (ABIN653273 and ABIN2842789) (green line). The cells were fixed with 2 % paraformaldehyde (10 min). The cells were then incubated in 2 % bovine serum albumin to block non-specific protein-protein interactions followed by the antibody ((ABIN653273 and ABIN2842789), 1:25 dilution) for 60 min at 37 °C. The secondary antibody used was Goat-Anti-Rabbit IgG, DyLight® 488 Conjugated Highly Cross-Adsorbed(OH191631) at 1/200 dilution for 40 min at 37 °C. Isotype control antibody (blue line) was rabbit IgG1 (1 µg/1x10⁶ cells) used under the same conditions. Acquisition of >10,000 events was performed.



Western Blotting

Image 2. All lanes : Anti-ENTPD2 Antibody at 1:1000 dilution
Lane 1: human heart lysate Lane 2: 293 whole cell lysate
Lane 3: U-87 MG whole cell lysate Lane 4: human brain lysate Lane 5: human skeletal muscle lysate
Lysates/proteins at 20 µg per lane. Secondary Goat Anti-Rabbit IgG, (H+L), Peroxidase conjugated at 1/10000 dilution. Predicted band size : 54 kDa Blocking/Dilution buffer: 5 % NFDM/TBST.



Western Blotting

Image 3. All lanes : Anti-ENTPD2 Antibody (N-term) at 1:2000 dilution
Lane 1: H.heart lysate Lane 2: 293 whole cell lysate Lane 3: U-87 MG whole cell lysate Lane 4: H.brain whole cell lysate
Lysates/proteins at 20 µg per lane. Secondary Goat Anti-Rabbit IgG, (H+L), Peroxidase conjugated at 1/10000 dilution. Predicted band size : 54 kDa Blocking/Dilution buffer: 5 % NFDM/TBST.

Please check the [product details page](#) for more images. Overall 5 images are available for ABIN653273.