



[Go to Product page](#)

Datasheet for ABIN653275
anti-RPLP2 antibody (N-Term)

1 Image

Overview

Quantity:	400 µL
Target:	RPLP2
Binding Specificity:	AA 13-41, N-Term
Reactivity:	Human
Host:	Rabbit
Clonality:	Polyclonal
Conjugate:	This RPLP2 antibody is un-conjugated
Application:	Western Blotting (WB)

Product Details

Immunogen:	This RPLP2 antibody is generated from rabbits immunized with a KLH conjugated synthetic peptide between 13-41 amino acids from the N-terminal region of human RPLP2.
Clone:	RB40737
Isotype:	Ig Fraction
Predicted Reactivity:	B, M, Rb
Purification:	This antibody is purified through a protein A column, followed by peptide affinity purification.

Target Details

Target:	RPLP2
Alternative Name:	RPLP2 (RPLP2 Products)

Target Details

Background: RPLP2 consist of a small 40S subunit and a large 60S subunit. Together these subunits are composed of 4 RNA species and approximately 80 structurally distinct proteins. This protein encodes a ribosomal phosphoprotein that is a component of the 60S subunit. The protein, which is a functional equivalent of the E. coli L7/L12 ribosomal protein, belongs to the L12P family of ribosomal proteins. It plays an important role in the elongation step of protein synthesis. Unlike most ribosomal proteins, which are basic, the encoded protein is acidic. Its C-terminal end is nearly identical to the C-terminal ends of the ribosomal phosphoproteins P0 and P1. The P2 protein can interact with P0 and P1 to form a pentameric complex consisting of P1 and P2 dimers, and a P0 monomer. The protein is located in the cytoplasm. As is typical for genes encoding ribosomal proteins, there are multiple processed pseudogenes of this gene dispersed through the genome.

Molecular Weight: 11665

Gene ID: 6181

NCBI Accession: [NP_000995](#)

UniProt: [P05387](#)

Application Details

Application Notes: WB: 1:1000

Restrictions: For Research Use only

Handling

Format: Liquid

Buffer: Purified polyclonal antibody supplied in PBS with 0.09 % (W/V) sodium azide.

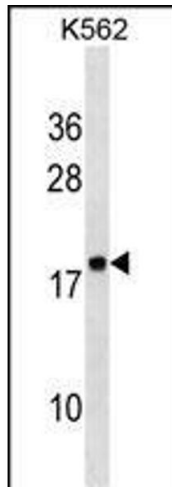
Preservative: Sodium azide

Precaution of Use: This product contains Sodium azide: a POISONOUS AND HAZARDOUS SUBSTANCE which should be handled by trained staff only.

Storage: 4 °C,-20 °C

Storage Comment: Maintain refrigerated at 2-8 °C for up to 6 months. For long term storage store at -20 °C in small aliquots to prevent freeze-thaw cycles.

Expiry Date: 6 months



Western Blotting

Image 1. RPLP2 Antibody (N-Term) (ABIN653275 and ABIN2842791) western blot analysis in K562 cell line lysates (35 µg/lane). This demonstrates the RPLP2 antibody detected the RPLP2 protein (arrow).