

Datasheet for ABIN653286
anti-BCL3 antibody (Center)[Go to Product page](#)

2 Images

1 Publication

Overview

Quantity:	400 µL
Target:	BCL3
Binding Specificity:	AA 249-277, Center
Reactivity:	Human, Mouse
Host:	Rabbit
Clonality:	Polyclonal
Conjugate:	This BCL3 antibody is un-conjugated
Application:	Western Blotting (WB), Flow Cytometry (FACS), Immunofluorescence (IF), Immunohistochemistry (Paraffin-embedded Sections) (IHC (p))

Product Details

Immunogen:	This BCL3 antibody is generated from rabbits immunized with a KLH conjugated synthetic peptide between 249-277 AA from the Central region of human BCL3.
Clone:	RB23954
Isotype:	Ig Fraction
Specificity:	This BCL3 antibody is generated from rabbits immunized with a KLH conjugated synthetic peptide between 248~277 amino acids from the Center region of human BCL3.
Purification:	This antibody is purified through a protein A column, followed by peptide affinity purification.

Target Details

Target:	BCL3
---------	------

Target Details

Alternative Name:	BCL3 (BCL3 Products)
Background:	BCL3 is a proto-oncogene candidate. It is identified by its translocation into the immunoglobulin alpha-locus in some cases of B-cell leukemia. The protein contains seven ankyrin repeats, which are most closely related to those found in I kappa B proteins. This protein functions as a transcriptional co-activator that activates through its association with NF-kappa B homodimers. Synonyms: Proto-oncogene BCL3, B-cell lymphoma 3 protein, BCL-3, D19S37, BCL4, BCL3
Molecular Weight:	46800 Da
Gene ID:	602
UniProt:	P20749
Pathways:	NF-kappaB Signaling , Maintenance of Protein Location , Protein targeting to Nucleus

Application Details

Application Notes:	WB = 1:1000, IHC (p) = 1:10-50, IF = 1:10-50, FACS = 1:10-50
Restrictions:	For Research Use only

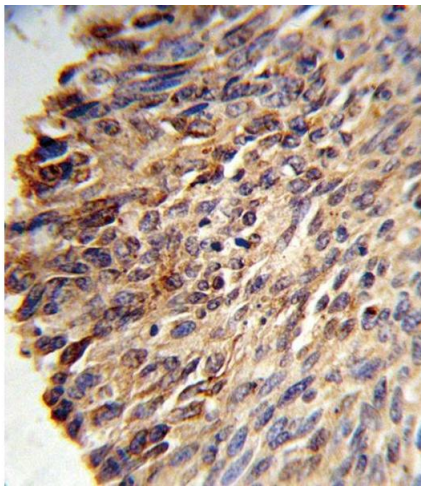
Handling

Format:	Liquid
Concentration:	0.48 mg/mL
Buffer:	PBS with 0.09 % (W/V) sodium azide
Preservative:	Sodium azide
Precaution of Use:	This product contains sodium azide: a POISONOUS AND HAZARDOUS SUBSTANCE which should be handled by trained staff only.
Storage:	4 °C/-20 °C
Storage Comment:	Maintain refrigerated at 2-8 °C for up to 6 months. For long term storage store at -20 °C in small aliquots to prevent freeze-thaw cycles.
Expiry Date:	6 months

Publications

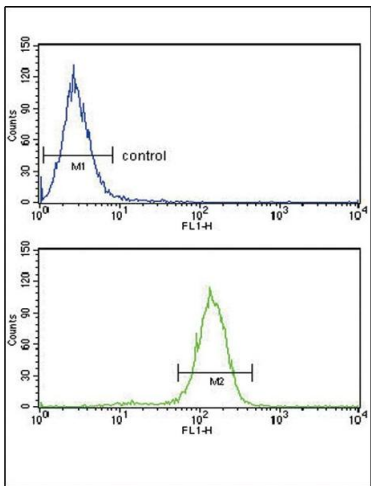
Product cited in:	Gehrke, Wörns, Huber, Hess, Straub, Hövelmeyer, Waisman, Kim, Schuppan, Galle, Schattenberg : "Hepatic B cell leukemia-3 promotes hepatic steatosis and inflammation through insulin-
-------------------	--

sensitive metabolic transcription factors." in: **Journal of hepatology**, Vol. 65, Issue 6, pp. 1188-1197, (2018) ([PubMed](#)).



Immunohistochemistry (Paraffin-embedded Sections)

Image 1. Formalin-fixed and paraffin-embedded human lung carcinoma reacted with BCL3 Antibody (Center), which was peroxidase-conjugated to the secondary antibody, followed by DAB staining. This data demonstrates the use of this antibody for immunohistochemistry, clinical relevance has not been evaluated.



Flow Cytometry

Image 2. BCL3 Antibody (Center) flow cytometry analysis of HeLa cells (bottom histogram) compared to a negative control cell (top histogram). FITC-conjugated goat-anti-rabbit secondary antibodies were used for the analysis.