

Datasheet for ABIN653290
anti-GPM6A antibody (C-Term)[Go to Product page](#)

2 Images

Overview

Quantity:	400 µL
Target:	GPM6A
Binding Specificity:	AA 232-259, C-Term
Reactivity:	Human
Host:	Rabbit
Clonality:	Polyclonal
Conjugate:	This GPM6A antibody is un-conjugated
Application:	Western Blotting (WB), Flow Cytometry (FACS)

Product Details

Immunogen:	This GPM6A antibody is generated from rabbits immunized with a KLH conjugated synthetic peptide between 232-259 amino acids from the C-terminal region of human GPM6A.
Clone:	RB23992
Isotype:	Ig Fraction
Predicted Reactivity:	B, M, Rat
Purification:	This antibody is purified through a protein A column, followed by peptide affinity purification.

Target Details

Target:	GPM6A
Alternative Name:	GPM6A (GPM6A Products)

Target Details

Molecular Weight:	31210
Gene ID:	2823
NCBI Accession:	NP_001248377 , NP_005268 , NP_963885 , NP_963886
UniProt:	P51674

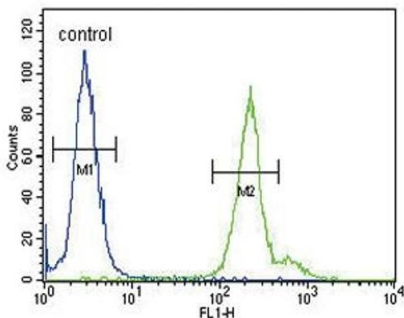
Application Details

Application Notes:	WB: 1:1000. FC: 1:10~50
Restrictions:	For Research Use only

Handling

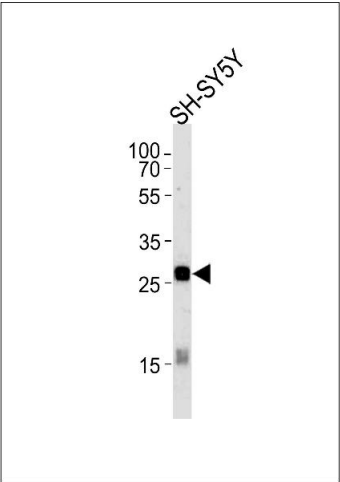
Format:	Liquid
Buffer:	Purified polyclonal antibody supplied in PBS with 0.09 % (W/V) sodium azide.
Preservative:	Sodium azide
Precaution of Use:	This product contains Sodium azide: a POISONOUS AND HAZARDOUS SUBSTANCE which should be handled by trained staff only.
Storage:	4 °C, -20 °C
Storage Comment:	Maintain refrigerated at 2-8 °C for up to 6 months. For long term storage store at -20 °C in small aliquots to prevent freeze-thaw cycles.
Expiry Date:	6 months

Images



Flow Cytometry

Image 1. GA Antibody (C-term) (ABIN653290 and ABIN2842797) flow cytometric analysis of 293 cells (right histogram) compared to a negative control cell (left histogram). FITC-conjugated goat-anti-rabbit secondary antibodies were used for the analysis.



Western Blotting

Image 2. GA Antibody (C-term) (ABIN653290 and ABIN2842797) western blot analysis in SH-SY5Y cell line lysates (35 µg/lane). This demonstrates the GA antibody detected the GA protein (arrow).