

Datasheet for ABIN653292
anti-GPR50 antibody (AA 316-344)[Go to Product page](#)

2 Images

Overview

Quantity:	400 µL
Target:	GPR50
Binding Specificity:	AA 316-344
Reactivity:	Human
Host:	Rabbit
Clonality:	Polyclonal
Conjugate:	This GPR50 antibody is un-conjugated
Application:	Western Blotting (WB), Flow Cytometry (FACS)

Product Details

Immunogen:	This GPR50 antibody is generated from rabbits immunized with a KLH conjugated synthetic peptide between 316-344 amino acids from the Central region of human GPR50.
Clone:	RB24002
Isotype:	Ig Fraction
Purification:	This antibody is purified through a protein A column, followed by peptide affinity purification.

Target Details

Target:	GPR50
Alternative Name:	GPR50 (GPR50 Products)
Background:	Melatonin-related receptor expression has been documented from human CNS tissues,

Target Details

specifically in hypothalamus and pituitary, but not in human peripheral tissues. In animals, expression has also been seen in the CNS, and peripheral tissues.

Molecular Weight: 67369

Gene ID: 9248

NCBI Accession: [NP_004215](#)

UniProt: [Q13585](#)

Application Details

Application Notes: WB: 1:1000. FC: 1:10~50

Restrictions: For Research Use only

Handling

Format: Liquid

Buffer: Purified polyclonal antibody supplied in PBS with 0.09 % (W/V) sodium azide.

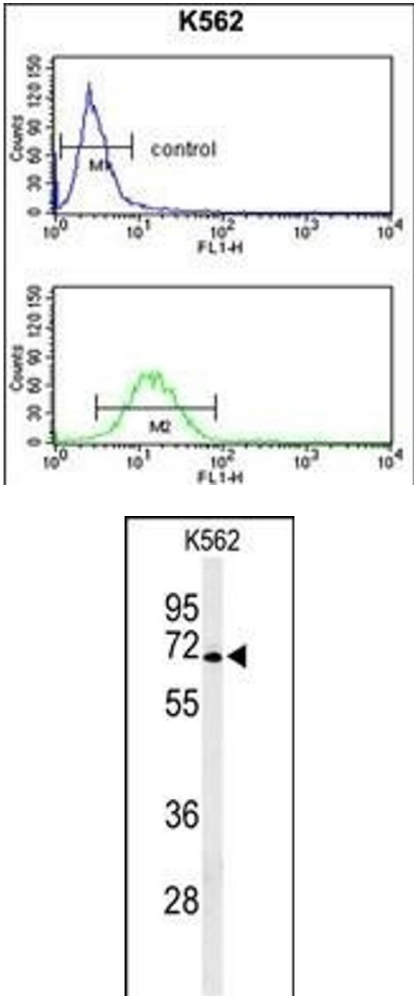
Preservative: Sodium azide

Precaution of Use: This product contains Sodium azide: a POISONOUS AND HAZARDOUS SUBSTANCE which should be handled by trained staff only.

Storage: 4 °C, -20 °C

Storage Comment: Maintain refrigerated at 2-8 °C for up to 6 months. For long term storage store at -20 °C in small aliquots to prevent freeze-thaw cycles.

Expiry Date: 6 months



Flow Cytometry

Image 1. GPR50 Antibody (Center) (ABIN653292 and ABIN2842798) flow cytometry analysis of K562 cells (bottom histogram) compared to a negative control cell (top histogram). FITC-conjugated goat-anti-rabbit secondary antibodies were used for the analysis.

Western Blotting

Image 2. Western blot analysis of GPR50 Antibody (Center) (ABIN653292 and ABIN2842798) in K562 cell line lysates (35 µg/lane). GPR50 (arrow) was detected using the purified Pab.