



[Go to Product page](#)

Datasheet for ABIN653297

anti-Glucuronidase beta antibody (AA 335-362)

4 Images

Overview

Quantity:	400 µL
Target:	Glucuronidase beta (GUSB)
Binding Specificity:	AA 335-362
Reactivity:	Human, Mouse
Host:	Rabbit
Clonality:	Polyclonal
Conjugate:	This Glucuronidase beta antibody is un-conjugated
Application:	Western Blotting (WB), Flow Cytometry (FACS), Immunohistochemistry (Paraffin-embedded Sections) (IHC (p))

Product Details

Immunogen:	This GUSB antibody is generated from rabbits immunized with a KLH conjugated synthetic peptide between 335-362 amino acids from the Central region of human GUSB.
Clone:	RB24036
Isotype:	Ig Fraction
Predicted Reactivity:	Pig
Purification:	This antibody is purified through a protein A column, followed by peptide affinity purification.

Target Details

Target:	Glucuronidase beta (GUSB)
---------	---------------------------

Target Details

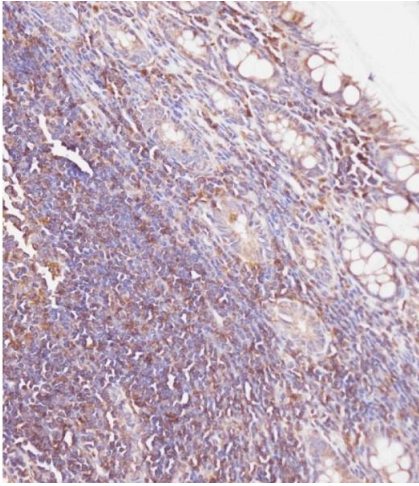
Alternative Name:	GUSB (GUSB Products)
Background:	The GUSB gene encodes beta-glucuronidase (EC 3.2.1.31), a lysosomal hydrolase involved in the stepwise degradation of glucuronic acid-containing glycosaminoglycans (Shibley et al., 1993 [PubMed 7680524]). It is a tetrameric glycoprotein composed of identical subunits (Oshima et al., 1987 [PubMed 3468507]). The GUSB gene is mutated in mucopolysaccharidosis type VII (MPS7, MIM 253220).
Molecular Weight:	74732
Gene ID:	2990
NCBI Accession:	NP_000172
UniProt:	P08236
Pathways:	Glycosaminoglycan Metabolic Process

Application Details

Application Notes:	WB: 1:4000. IHC-P: 1:100. IHC-P: 1:100. FC: 1:10~50
Restrictions:	For Research Use only

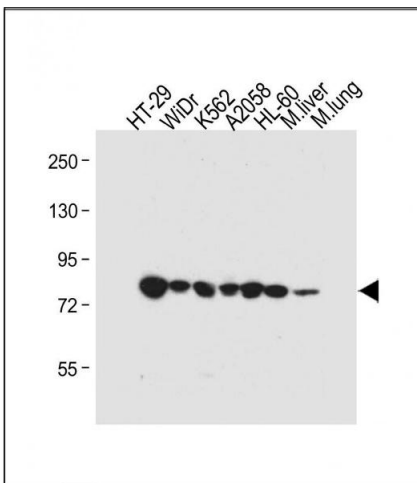
Handling

Format:	Liquid
Buffer:	Purified polyclonal antibody supplied in PBS with 0.09 % (W/V) sodium azide.
Preservative:	Sodium azide
Precaution of Use:	This product contains Sodium azide: a POISONOUS AND HAZARDOUS SUBSTANCE which should be handled by trained staff only.
Storage:	4 °C,-20 °C
Storage Comment:	Maintain refrigerated at 2-8 °C for up to 6 months. For long term storage store at -20 °C in small aliquots to prevent freeze-thaw cycles.
Expiry Date:	6 months



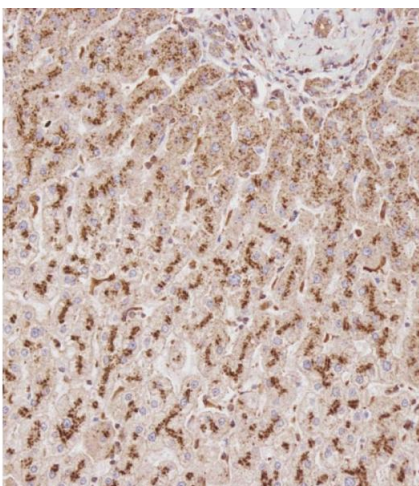
Immunohistochemistry (Paraffin-embedded Sections)

Image 1. Immunohistochemical analysis of C on paraffin-embedded Human colon carcinoma tissue. Tissue was fixed with formaldehyde at room temperature. Heat induced epitope retrieval was performed by EDTA buffer (pH 9.0). Samples were incubated with primary Antibody (1:100) for 1 hour at room temperature. Undiluted CRF Anti-Polyvalent HRP Polymer antibody was used as the secondary antibody.



Western Blotting

Image 2. All lanes : Anti-GUSB Antibody (Center) at 1:4000 dilution Lane 1: HT-29 whole cell lysate Lane 2: WiDr whole cell lysate Lane 3: K562 whole cell lysate Lane 4: whole cell lysate Lane 5: HL-60 whole cell lysate Lane 6: Mouse liver tissue lysate Lane 7: Mouse lung tissue lysate Lysates/proteins at 20 µg per lane. Secondary Goat Anti-Rabbit IgG, (H+L), Peroxidase conjugated at 1/10000 dilution. Predicted band size : 75 kDa Blocking/Dilution buffer: 5 % NFDm/TBST.



Immunohistochemistry (Paraffin-embedded Sections)

Image 3. Immunohistochemical analysis of C on paraffin-embedded Human liver tissue. Tissue was fixed with formaldehyde at room temperature. Heat induced epitope retrieval was performed by EDTA buffer (pH 9.0). Samples were incubated with primary Antibody (1:100) for 1 hour at room temperature. Undiluted CRF Anti-Polyvalent HRP Polymer antibody was used as the secondary antibody.

Please check the [product details page](#) for more images. Overall 4 images are available for ABIN653297.