



[Go to Product page](#)

Datasheet for ABIN653303  
**anti-TCHP antibody (AA 291-320)**

3 Images

### Overview

Quantity:	400 µL
Target:	TCHP
Binding Specificity:	AA 291-320
Reactivity:	Human
Host:	Rabbit
Clonality:	Polyclonal
Conjugate:	This TCHP antibody is un-conjugated
Application:	Western Blotting (WB), Flow Cytometry (FACS), Immunohistochemistry (Paraffin-embedded Sections) (IHC (p))

### Product Details

Immunogen:	This TCHP antibody is generated from rabbits immunized with a KLH conjugated synthetic peptide between 291-320 amino acids from the Central region of human TCHP.
Clone:	RB24714
Isotype:	Ig Fraction
Purification:	This antibody is purified through a protein A column, followed by peptide affinity purification.

### Target Details

Target:	TCHP
Alternative Name:	TCHP ( <a href="#">TCHP Products</a> )

## Target Details

---

Background:	TCHP may act as a 'capping' or 'branching' protein for keratin filaments in the cell periphery. This protein may regulate K8/K18 filament and desmosome organization mainly at the apical or peripheral regions of simple epithelial cells.
Molecular Weight:	61072
Gene ID:	84260
NCBI Accession:	<a href="#">NP_001137324</a> , <a href="#">NP_115676</a>
UniProt:	<a href="#">Q9BT92</a>

## Application Details

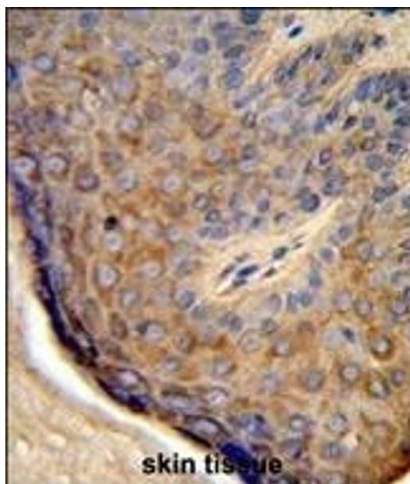
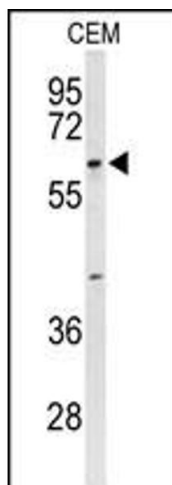
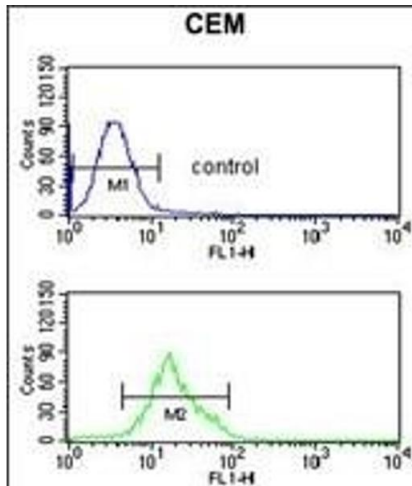
---

Application Notes:	WB: 1:1000. IHC-P: 1:50~100. FC: 1:10~50
Restrictions:	For Research Use only

## Handling

---

Format:	Liquid
Buffer:	Purified polyclonal antibody supplied in PBS with 0.09 % (W/V) sodium azide.
Preservative:	Sodium azide
Precaution of Use:	This product contains Sodium azide: a POISONOUS AND HAZARDOUS SUBSTANCE which should be handled by trained staff only.
Storage:	4 °C, -20 °C
Storage Comment:	Maintain refrigerated at 2-8 °C for up to 6 months. For long term storage store at -20 °C in small aliquots to prevent freeze-thaw cycles.
Expiry Date:	6 months



### Flow Cytometry

**Image 1.** TCHP Antibody (Center) (ABIN653303 and ABIN2842803) flow cytometric analysis of CEM cells (bottom histogram) compared to a negative control cell (top histogram). FITC-conjugated goat-anti-rabbit secondary antibodies were used for the analysis.

### Western Blotting

**Image 2.** Western blot analysis of TCHP Antibody (Center) (ABIN653303 and ABIN2842803) in CEM cell line lysates (35 µg/lane). TCHP (arrow) was detected using the purified Pab.

### Immunohistochemistry (Paraffin-embedded Sections)

**Image 3.** Formalin-fixed and paraffin-embedded human skin tissue reacted with TCHP Antibody (Center), which was peroxidase-conjugated to the secondary antibody, followed by DAB staining. This data demonstrates the use of this antibody for immunohistochemistry, clinical relevance has not been evaluated.