

Datasheet for ABIN653304  
**anti-PPIC antibody (AA 61-89)**[Go to Product page](#)

## 3 Images

## Overview

Quantity:	400 µL
Target:	PPIC
Binding Specificity:	AA 61-89
Reactivity:	Human
Host:	Rabbit
Clonality:	Polyclonal
Conjugate:	This PPIC antibody is un-conjugated
Application:	Western Blotting (WB), Flow Cytometry (FACS), Immunohistochemistry (Paraffin-embedded Sections) (IHC (p))

## Product Details

Immunogen:	This PPIC antibody is generated from rabbits immunized with a KLH conjugated synthetic peptide between 61-89 amino acids from the Central region of human PPIC.
Clone:	RB24739
Isotype:	Ig Fraction
Predicted Reactivity:	B
Purification:	This antibody is purified through a protein A column, followed by peptide affinity purification.

## Target Details

Target:	PPIC
---------	------

## Target Details

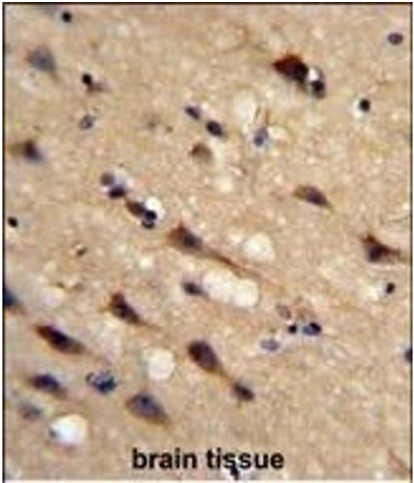
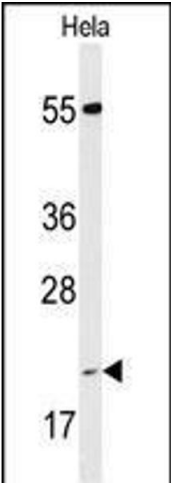
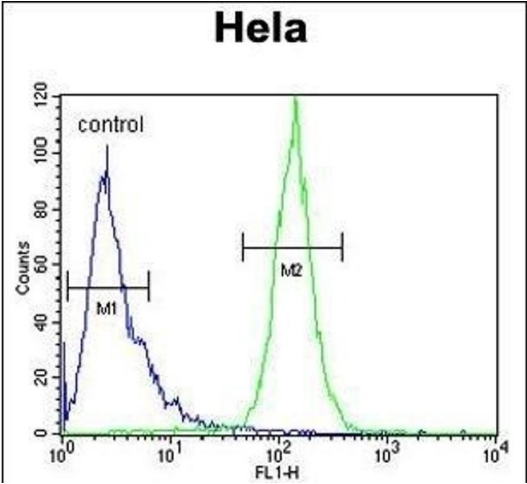
Alternative Name:	PPIC ( <a href="#">PPIC Products</a> )
Background:	PPIC is a member of the peptidyl-prolyl cis-trans isomerase (PPIase)) family. PPIases catalyze the cis-trans isomerization of proline imidic peptide bonds in oligopeptides and accelerate the folding of proteins. Similar to other PPIases, this protein can bind immunosuppressant cyclosporin A.
Molecular Weight:	22763
Gene ID:	5480
NCBI Accession:	<a href="#">NP_000934</a>
UniProt:	<a href="#">P45877</a>

## Application Details

Application Notes:	WB: 1:1000. IHC-P: 1:50~100. FC: 1:10~50
Restrictions:	For Research Use only

## Handling

Format:	Liquid
Buffer:	Purified polyclonal antibody supplied in PBS with 0.09 % (W/V) sodium azide.
Preservative:	Sodium azide
Precaution of Use:	This product contains Sodium azide: a POISONOUS AND HAZARDOUS SUBSTANCE which should be handled by trained staff only.
Storage:	4 °C,-20 °C
Storage Comment:	Maintain refrigerated at 2-8 °C for up to 6 months. For long term storage store at -20 °C in small aliquots to prevent freeze-thaw cycles.
Expiry Date:	6 months



### Flow Cytometry

**Image 1.** IC Antibody (Center) (ABIN653304 and ABIN2842804) flow cytometric analysis of Hela cells (right histogram) compared to a negative control cell (left histogram). FITC-conjugated goat-anti-rabbit secondary antibodies were used for the analysis.

### Western Blotting

**Image 2.** Western blot analysis of IC Antibody (Center) (ABIN653304 and ABIN2842804) in Hela cell line lysates (35 µg/lane). IC (arrow) was detected using the purified Pab.

### Immunohistochemistry (Paraffin-embedded Sections)

**Image 3.** Formalin-fixed and paraffin-embedded human brain tissue reacted with IC Antibody (Center), which was peroxidase-conjugated to the secondary antibody, followed by DAB staining. This data demonstrates the use of this antibody for immunohistochemistry, clinical relevance has not been evaluated.