



[Go to Product page](#)

Datasheet for ABIN653305
anti-TRERF1 antibody (C-Term)

3 Images

Overview

Quantity:	400 µL
Target:	TRERF1
Binding Specificity:	AA 1136-1164, C-Term
Reactivity:	Human
Host:	Rabbit
Clonality:	Polyclonal
Conjugate:	This TRERF1 antibody is un-conjugated
Application:	Western Blotting (WB), Flow Cytometry (FACS), Immunofluorescence (IF)

Product Details

Immunogen:	This TREF1 antibody is generated from rabbits immunized with a KLH conjugated synthetic peptide between 1136-1164 amino acids from the C-terminal region of human TREF1.
Clone:	RB24740
Isotype:	Ig Fraction
Purification:	This antibody is purified through a protein A column, followed by peptide affinity purification.

Target Details

Target:	TRERF1
Alternative Name:	TREF1 (TRERF1 Products)
Background:	TREF1 encodes a zinc-finger transcriptional regulating protein which interacts with CBP/p300

Target Details

to regulate the human gene CYP11A1.

Molecular Weight: 132256

Gene ID: 55809

NCBI Accession: [NP_277037](#)

UniProt: [Q96PN7](#)

Pathways: [Regulation of Hormone Metabolic Process](#), [Regulation of Hormone Biosynthetic Process](#),
[Chromatin Binding](#)

Application Details

Application Notes: IF: 1:10~50. WB: 1:1000. FC: 1:10~50

Restrictions: For Research Use only

Handling

Format: Liquid

Buffer: Purified polyclonal antibody supplied in PBS with 0.09 % (W/V) sodium azide.

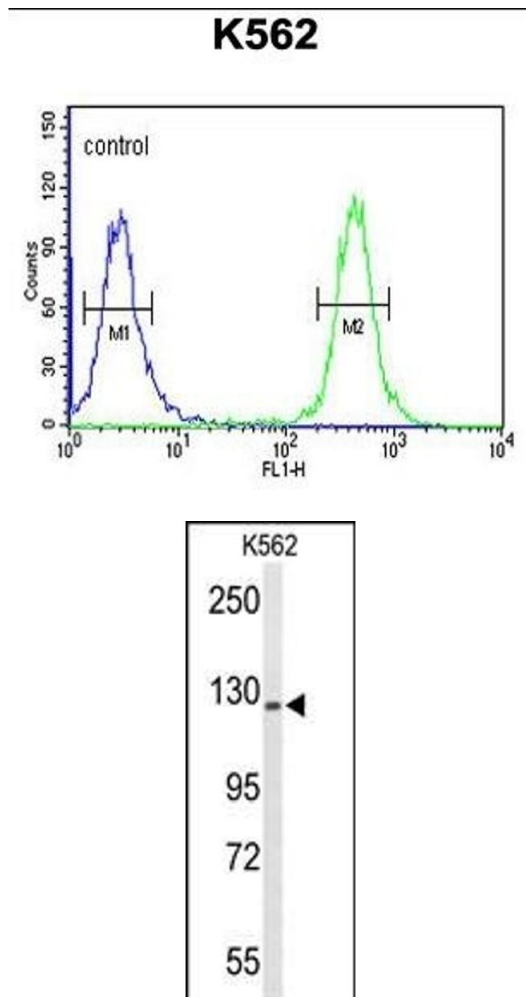
Preservative: Sodium azide

Precaution of Use: This product contains Sodium azide: a POISONOUS AND HAZARDOUS SUBSTANCE which should be handled by trained staff only.

Storage: 4 °C, -20 °C

Storage Comment: Maintain refrigerated at 2-8 °C for up to 6 months. For long term storage store at -20 °C in small aliquots to prevent freeze-thaw cycles.

Expiry Date: 6 months

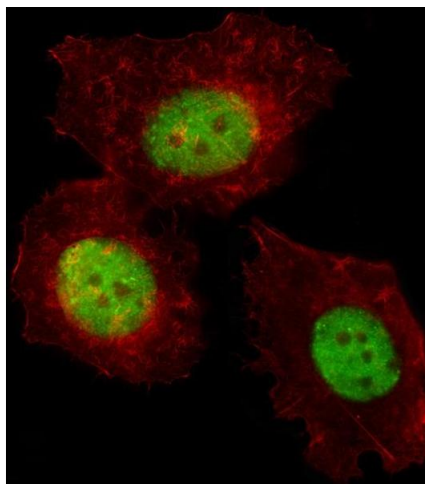


Flow Cytometry

Image 1. TREF1 Antibody (C-term) (ABIN653305 and ABIN2842805) flow cytometric analysis of K562 cells (right histogram) compared to a negative control cell (left histogram). FITC-conjugated goat-anti-rabbit secondary antibodies were used for the analysis.

Western Blotting

Image 2. Western blot analysis of TREF1 Antibody (C-term) (ABIN653305 and ABIN2842805) in K562 cell line lysates (35 μ g/lane). TREF1 (arrow) was detected using the purified Pab.



Immunofluorescence

Image 3. Fluorescent image of MCF-7 cell stained with TREF1 Antibody (C-term) (ABIN653305 and ABIN2842805). MCF-7 cells were fixed with 4 % PFA (20 min), permeabilized with Triton X-100 (0.1 %, 10 min), then incubated with TREF1 primary antibody (1:25, 1 h at 37 °C). For secondary antibody, Alexa Fluor® 488 conjugated donkey anti-rabbit antibody (green) was used (1:400, 50 min at 37 °C). Cytoplasmic actin was counterstained with Alexa Fluor® 555 (red) conjugated Phalloidin (7 units/mL, 1 h at 37 °C). TREF1 immunoreactivity is localized to Nucleus significantly.