

Datasheet for ABIN653308
anti-SLC39A8 antibody (AA 218-246)[Go to Product page](#)

2 Images

Overview

Quantity:	400 µL
Target:	SLC39A8
Binding Specificity:	AA 218-246
Reactivity:	Human
Host:	Rabbit
Clonality:	Polyclonal
Conjugate:	This SLC39A8 antibody is un-conjugated
Application:	Western Blotting (WB), Flow Cytometry (FACS)

Product Details

Immunogen:	This S39A8 antibody is generated from rabbits immunized with a KLH conjugated synthetic peptide between 218-246 amino acids from the Central region of human S39A8.
Clone:	RB24763
Isotype:	Ig Fraction
Purification:	This antibody is purified through a protein A column, followed by peptide affinity purification.

Target Details

Target:	SLC39A8
Alternative Name:	S39A8 (SLC39A8 Products)
Background:	S39A8 encodes a member of the SLC39 family of solute-carrier genes, which show structural

Target Details

characteristics of zinc transporters. The encoded protein is glycosylated and found in the plasma membrane and mitochondria, and functions in the cellular import of zinc at the onset of inflammation. It is also thought to be the primary transporter of the toxic cation cadmium, which is found in cigarette smoke.

Molecular Weight: 49631

Gene ID: 64116

NCBI Accession: [NP_001128618](#), [NP_001128619](#), [NP_001128620](#), [NP_071437](#)

UniProt: [Q9C0K1](#)

Application Details

Application Notes: WB: 1:1000. FC: 1:10~50

Restrictions: For Research Use only

Handling

Format: Liquid

Buffer: Purified polyclonal antibody supplied in PBS with 0.09 % (W/V) sodium azide.

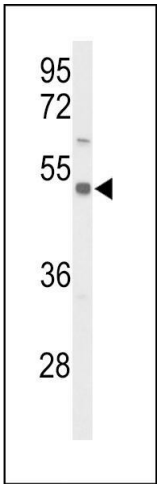
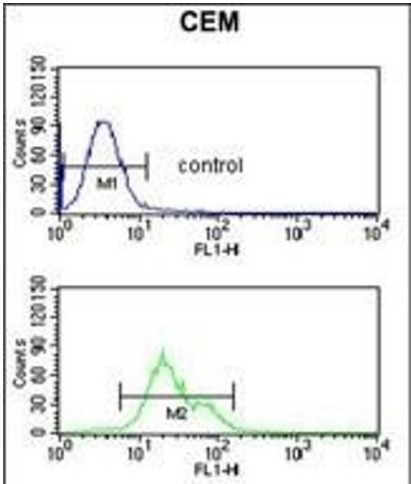
Preservative: Sodium azide

Precaution of Use: This product contains Sodium azide: a POISONOUS AND HAZARDOUS SUBSTANCE which should be handled by trained staff only.

Storage: 4 °C, -20 °C

Storage Comment: Maintain refrigerated at 2-8 °C for up to 6 months. For long term storage store at -20 °C in small aliquots to prevent freeze-thaw cycles.

Expiry Date: 6 months



Flow Cytometry

Image 1. S39A8 Antibody (Center) (ABIN653308 and ABIN2842807) flow cytometric analysis of CEM cells (bottom histogram) compared to a negative control cell (top histogram).FITC-conjugated goat-anti-rabbit secondary antibodies were used for the analysis.

Western Blotting

Image 2. Western blot analysis of S39A8 Antibody (Center) (ABIN653308 and ABIN2842807) in CEM cell line lysates (35 µg/lane). S39A8 (arrow) was detected using the purified Pab.