

Datasheet for ABIN653319
anti-SMNDC1 antibody (N-Term)

2 Images

[Go to Product page](#)

Overview

Quantity:	400 µL
Target:	SMNDC1
Binding Specificity:	AA 11-41, N-Term
Reactivity:	Human, Mouse
Host:	Rabbit
Clonality:	Polyclonal
Conjugate:	This SMNDC1 antibody is un-conjugated
Application:	Western Blotting (WB), Flow Cytometry (FACS)

Product Details

Immunogen:	This SMNDC1 antibody is generated from rabbits immunized with a KLH conjugated synthetic peptide between 11-41 amino acids from the N-terminal region of human SMNDC1.
Clone:	RB17335
Isotype:	Ig Fraction
Predicted Reactivity:	B, Rat
Purification:	This antibody is purified through a protein A column, followed by peptide affinity purification.

Target Details

Target:	SMNDC1
Alternative Name:	SMNDC1 (SMNDC1 Products)

Target Details

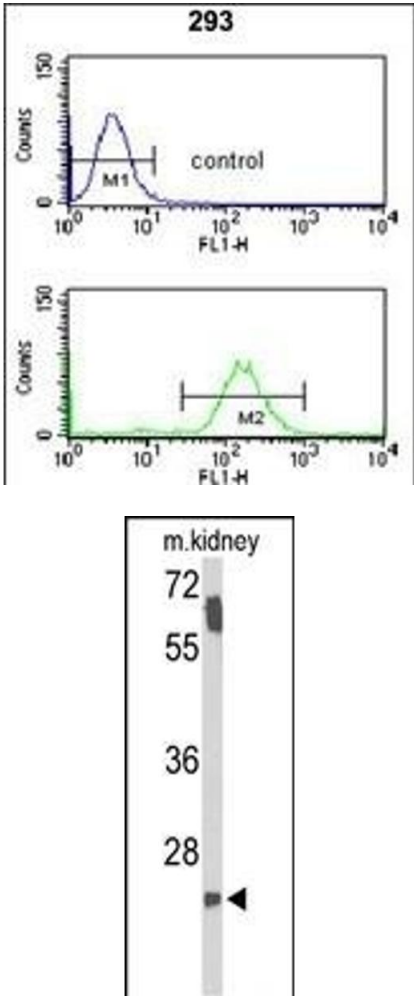
Background:	This protein is a paralog of SMN1 gene, which encodes the survival motor neuron protein, mutations in which are cause of autosomal recessive proximal spinal muscular atrophy. The protein encoded by this gene is a nuclear protein that has been identified as a constituent of the spliceosome complex. This protein is differentially expressed, with abundant levels in skeletal muscle, and may share similar cellular function as the SMN1 gene.
Molecular Weight:	26711
Gene ID:	10285
NCBI Accession:	NP_005862
UniProt:	O75940

Application Details

Application Notes:	WB: 1:1000. FC: 1:10~50
Restrictions:	For Research Use only

Handling

Format:	Liquid
Buffer:	Purified polyclonal antibody supplied in PBS with 0.09 % (W/V) sodium azide.
Preservative:	Sodium azide
Precaution of Use:	This product contains Sodium azide: a POISONOUS AND HAZARDOUS SUBSTANCE which should be handled by trained staff only.
Storage:	4 °C,-20 °C
Storage Comment:	Maintain refrigerated at 2-8 °C for up to 6 months. For long term storage store at -20 °C in small aliquots to prevent freeze-thaw cycles.
Expiry Date:	6 months



Flow Cytometry

Image 1. SMNDC1 Antibody (N-term) (ABIN653319 and ABIN2842811) flow cytometry analysis of 293 cells (bottom histogram) compared to a negative control cell (top histogram). FITC-conjugated goat-anti-rabbit secondary antibodies were used for the analysis.

Western Blotting

Image 2. Western blot analysis of SMNDC1 Antibody (N-term) (ABIN653319 and ABIN2842811) in mouse kidney tissue lysates (35 µg/lane). SMNDC1 (arrow) was detected using the purified Pab.