

Datasheet for ABIN653324  
**anti-MCM2 antibody (C-Term)**[Go to Product page](#)

## 3 Images

## Overview

Quantity:	400 µL
Target:	MCM2
Binding Specificity:	AA 649-677, C-Term
Reactivity:	Human, Mouse
Host:	Rabbit
Clonality:	Polyclonal
Conjugate:	This MCM2 antibody is un-conjugated
Application:	Western Blotting (WB), Immunohistochemistry (Paraffin-embedded Sections) (IHC (p))

## Product Details

Immunogen:	This MCM2 antibody is generated from rabbits immunized with a KLH conjugated synthetic peptide between 649-677 amino acids from the C-terminal region of human MCM2.
Clone:	RB25168
Isotype:	Ig Fraction
Predicted Reactivity:	X
Purification:	This antibody is purified through a protein A column, followed by peptide affinity purification.

## Target Details

Target:	MCM2
Alternative Name:	MCM2 ( <a href="#">MCM2 Products</a> )

## Target Details

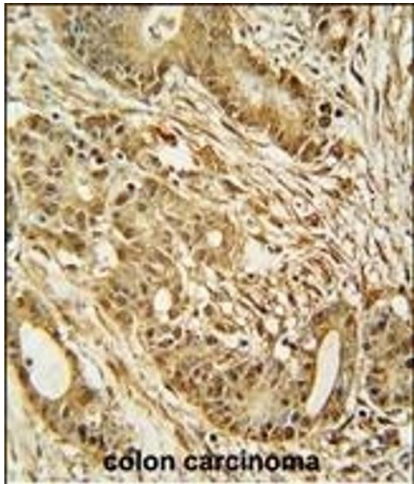
Background:	MCM2 is one of the highly conserved mini-chromosome maintenance proteins (MCM) that are involved in the initiation of eukaryotic genome replication. The hexameric protein complex formed by MCM proteins is a key component of the pre-replication complex (pre_RC) and may be involved in the formation of replication forks and in the recruitment of other DNA replication related proteins. This protein forms a complex with MCM4, 6, and 7, and has been shown to regulate the helicase activity of the complex. This protein is phosphorylated, and thus regulated by, protein kinases CDC2 and CDC7.
Molecular Weight:	101896
Gene ID:	4171
NCBI Accession:	<a href="#">NP_004517</a>
UniProt:	<a href="#">P49736</a>
Pathways:	<a href="#">DNA Damage Repair</a> , <a href="#">Mitotic G1-G1/S Phases</a> , <a href="#">DNA Replication</a> , <a href="#">Chromatin Binding</a> , <a href="#">Synthesis of DNA</a>

## Application Details

Application Notes:	WB: 1:1000. WB: 1:2000. IHC-P: 1:50~100
Restrictions:	For Research Use only

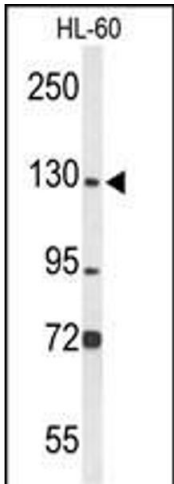
## Handling

Format:	Liquid
Buffer:	Purified polyclonal antibody supplied in PBS with 0.09 % (W/V) sodium azide.
Preservative:	Sodium azide
Precaution of Use:	This product contains Sodium azide: a POISONOUS AND HAZARDOUS SUBSTANCE which should be handled by trained staff only.
Storage:	4 °C, -20 °C
Storage Comment:	Maintain refrigerated at 2-8 °C for up to 6 months. For long term storage store at -20 °C in small aliquots to prevent freeze-thaw cycles.
Expiry Date:	6 months



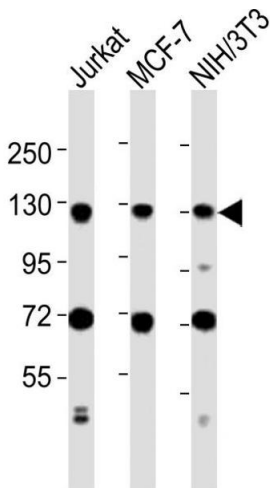
**Immunohistochemistry (Paraffin-embedded Sections)**

**Image 1.** MCM2 Antibody (C-term) (ABIN653324 and ABIN2842815) immunohistochemistry analysis in formalin fixed and paraffin embedded human colon carcinoma followed by peroxidase conjugation of the secondary antibody and DAB staining. This data demonstrates the use of the MCM2 Antibody (C-term) for immunohistochemistry. Clinical relevance has not been evaluated.



**Western Blotting**

**Image 2.** Western blot analysis of MCM2 Antibody (C-term) (ABIN653324 and ABIN2842815) in HL-60 cell line lysates (35 µg/lane). MCM2 (arrow) was detected using the purified Pab.



**Western Blotting**

**Image 3.** All lanes : Anti-MCM2 Antibody (C-term) at 1:2000 dilution Lane 1: Jurkat whole cell lysates Lane 2: MCF-7 whole cell lysates Lane 3: NIH/3T3 whole cell lysates Lysates/proteins at 20 µg per lane. Secondary Goat Anti-Rabbit IgG, (H+L), Peroxidase conjugated at 1/10000 dilution Predicted band size : 102 kDa Blocking/Dilution buffer: 5 % NFDM/TBST.