

Datasheet for ABIN653326
anti-PLVAP antibody (AA 214-242)[Go to Product page](#)

2 Images

Overview

Quantity:	400 µL
Target:	PLVAP
Binding Specificity:	AA 214-242
Reactivity:	Human
Host:	Rabbit
Clonality:	Polyclonal
Conjugate:	This PLVAP antibody is un-conjugated
Application:	Western Blotting (WB), Flow Cytometry (FACS)

Product Details

Immunogen:	This PLVAP antibody is generated from rabbits immunized with a KLH conjugated synthetic peptide between 214-242 amino acids from the Central region of human PLVAP.
Clone:	RB17891
Isotype:	Ig Fraction
Purification:	This antibody is purified through a protein A column, followed by peptide affinity purification.

Target Details

Target:	PLVAP
Alternative Name:	PLVAP (PLVAP Products)
Background:	PLVAP involved in the formation of stomatal and fenestral diaphragms of caveolae. This

Target Details

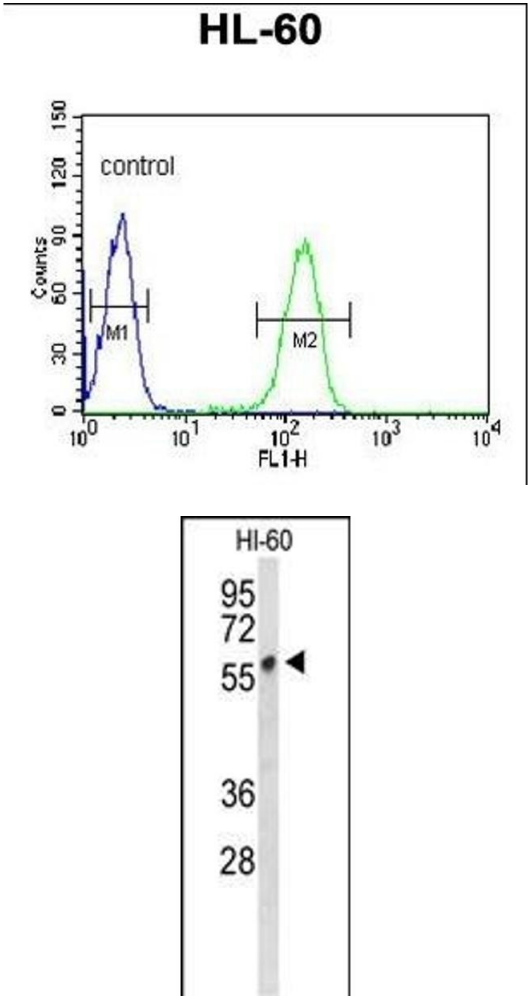
	protein may function in microvascular permeability.
Molecular Weight:	50594
Gene ID:	83483
NCBI Accession:	NP_112600
UniProt:	Q9BX97

Application Details

Application Notes:	WB: 1:1000. FC: 1:10~50
Restrictions:	For Research Use only

Handling

Format:	Liquid
Buffer:	Purified polyclonal antibody supplied in PBS with 0.09 % (W/V) sodium azide.
Preservative:	Sodium azide
Precaution of Use:	This product contains Sodium azide: a POISONOUS AND HAZARDOUS SUBSTANCE which should be handled by trained staff only.
Storage:	4 °C,-20 °C
Storage Comment:	Maintain refrigerated at 2-8 °C for up to 6 months. For long term storage store at -20 °C in small aliquots to prevent freeze-thaw cycles.
Expiry Date:	6 months



Flow Cytometry

Image 1. PLV Antibody (Center) 9378c flow cytometric analysis of HL-60 cells (right histogram) compared to a negative control cell (left histogram). FITC-conjugated goat-anti-rabbit secondary antibodies were used for the analysis.

Western Blotting

Image 2. Western blot analysis of PLV Antibody (Center) 9378c in HL-60 cell line lysates (35 µg/lane). PLV (arrow) was detected using the purified Pab.