

Datasheet for ABIN653334
anti-CSPP1 antibody (N-Term)

3 Images

[Go to Product page](#)

Overview

Quantity:	400 µL
Target:	CSPP1 (Cspp1)
Binding Specificity:	AA 304-333, N-Term
Reactivity:	Human
Host:	Rabbit
Clonality:	Polyclonal
Conjugate:	This CSPP1 antibody is un-conjugated
Application:	Western Blotting (WB), Flow Cytometry (FACS), Immunohistochemistry (Paraffin-embedded Sections) (IHC (p))

Product Details

Immunogen:	This CSPP1 antibody is generated from rabbits immunized with a KLH conjugated synthetic peptide between 304-333 amino acids from the N-terminal region of human CSPP1.
Clone:	RB22179
Isotype:	Ig Fraction
Purification:	This antibody is purified through a protein A column, followed by peptide affinity purification.

Target Details

Target:	CSPP1 (Cspp1)
Alternative Name:	CSPP1 (Cspp1 Products)

Target Details

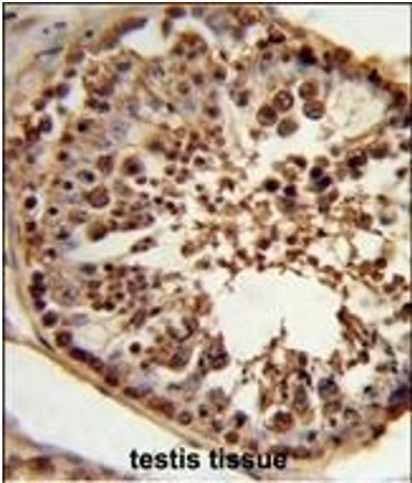
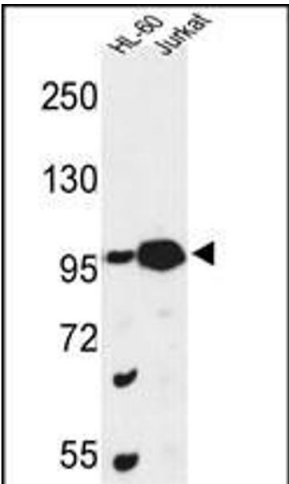
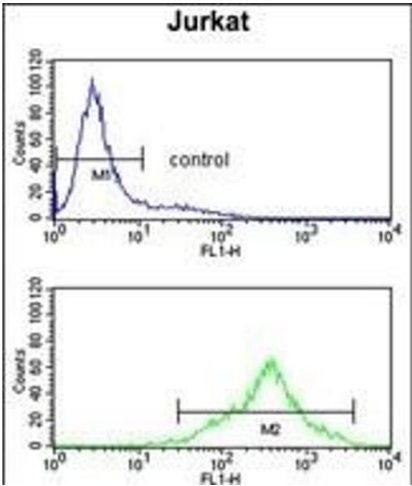
Background:	CSPP1 interacts with centrosomes and microtubules and plays a role in cell-cycle progression and spindle organization.
Molecular Weight:	145522
Gene ID:	79848
NCBI Accession:	NP_079066
UniProt:	Q1MSJ5

Application Details

Application Notes:	WB: 1:1000. IHC-P: 1:50~100. FC: 1:10~50
Restrictions:	For Research Use only

Handling

Format:	Liquid
Buffer:	Purified polyclonal antibody supplied in PBS with 0.09 % (W/V) sodium azide.
Preservative:	Sodium azide
Precaution of Use:	This product contains Sodium azide: a POISONOUS AND HAZARDOUS SUBSTANCE which should be handled by trained staff only.
Storage:	4 °C,-20 °C
Storage Comment:	Maintain refrigerated at 2-8 °C for up to 6 months. For long term storage store at -20 °C in small aliquots to prevent freeze-thaw cycles.
Expiry Date:	6 months



Flow Cytometry

Image 1. CS Antibody (N-term) (ABIN653334 and ABIN2842822) flow cytometry analysis of Jurkat cells (bottom histogram) compared to a negative control cell (top histogram). FITC-conjugated goat-anti-rabbit secondary antibodies were used for the analysis.

Western Blotting

Image 2. Western blot analysis of CS Antibody (N-term) (ABIN653334 and ABIN2842822) in HL-60, Jurkat cell line lysates (35 µg/lane). CS (arrow) was detected using the purified Pab.

Immunohistochemistry (Paraffin-embedded Sections)

Image 3. Formalin-fixed and paraffin-embedded human testis tissue reacted with CS Antibody (N-term), which was peroxidase-conjugated to the secondary antibody, followed by DAB staining. This data demonstrates the use of this antibody for immunohistochemistry, clinical relevance has not been evaluated.