

Datasheet for ABIN653341
anti-KDM4B antibody (N-Term)

3 Images

[Go to Product page](#)

Overview

| | |
|----------------------|---|
| Quantity: | 400 µL |
| Target: | KDM4B |
| Binding Specificity: | AA 4-31, N-Term |
| Reactivity: | Human |
| Host: | Rabbit |
| Clonality: | Polyclonal |
| Conjugate: | This KDM4B antibody is un-conjugated |
| Application: | Western Blotting (WB), Flow Cytometry (FACS), Immunohistochemistry (Paraffin-embedded Sections) (IHC (p)) |

Product Details

| | |
|---------------|---|
| Immunogen: | This JMJD2B antibody is generated from rabbits immunized with a KLH conjugated synthetic peptide between 4-31 amino acids from the N-terminal region of human JMJD2B. |
| Clone: | RB23110 |
| Isotype: | Ig Fraction |
| Purification: | This antibody is purified through a protein A column, followed by peptide affinity purification. |

Target Details

| | |
|-------------------|---|
| Target: | KDM4B |
| Alternative Name: | JMJD2B (KDM4B Products) |

Target Details

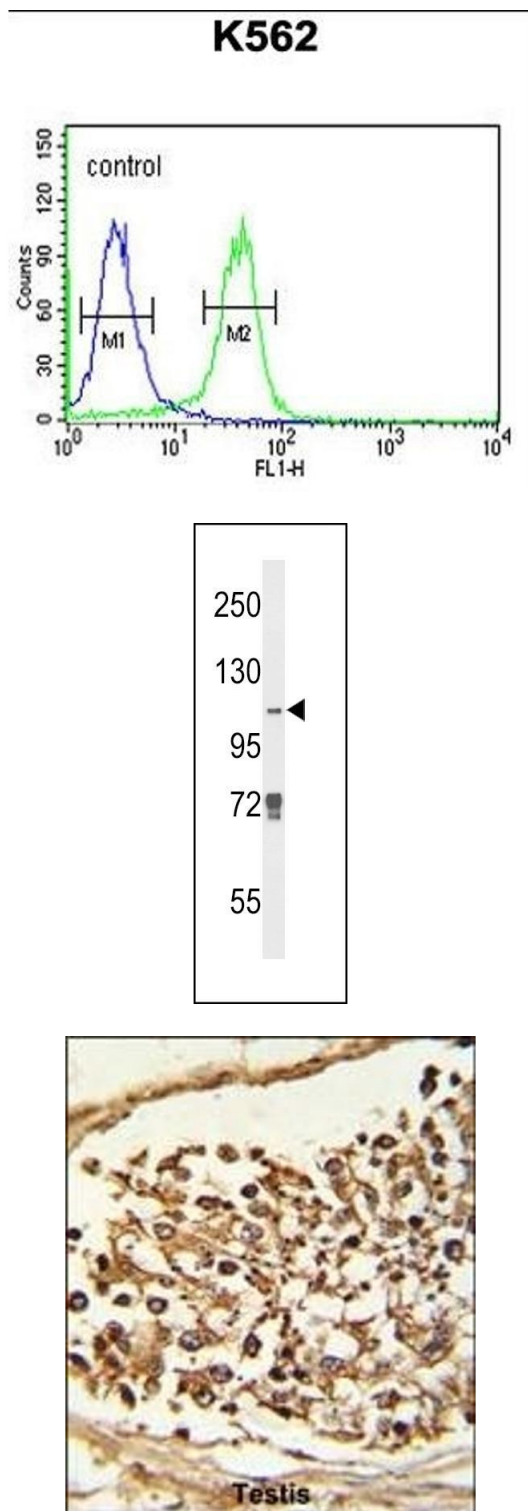
| | |
|-------------------|--|
| Background: | KDM4B / JMJD2B is a jumonji domain containing histone demethylase that specifically demethylates histone H3 at K9 and K36. |
| Molecular Weight: | 121897 |
| Gene ID: | 23030 |
| NCBI Accession: | NP_055830 |
| UniProt: | O94953 |
| Pathways: | Warburg Effect |

Application Details

| | |
|--------------------|--|
| Application Notes: | WB: 1:1000. IHC-P: 1:50~100. FC: 1:10~50 |
| Restrictions: | For Research Use only |

Handling

| | |
|--------------------|--|
| Format: | Liquid |
| Buffer: | Purified polyclonal antibody supplied in PBS with 0.09 % (W/V) sodium azide. |
| Preservative: | Sodium azide |
| Precaution of Use: | This product contains Sodium azide: a POISONOUS AND HAZARDOUS SUBSTANCE which should be handled by trained staff only. |
| Storage: | 4 °C,-20 °C |
| Storage Comment: | Maintain refrigerated at 2-8 °C for up to 6 months. For long term storage store at -20 °C in small aliquots to prevent freeze-thaw cycles. |
| Expiry Date: | 6 months |



Flow Cytometry

Image 1. JMJD2B Antibody (N-term) (ABIN653341 and ABIN2842825) flow cytometric analysis of K562 cells (right histogram) compared to a negative control cell (left histogram). FITC-conjugated goat-anti-rabbit secondary antibodies were used for the analysis.

Western Blotting

Image 2. Western blot analysis of JMJD2B Antibody (N-term) (ABIN653341 and ABIN2842825) in K562 cell line lysates (35 µg/lane). JMJD2B (arrow) was detected using the purified Pab.

Immunohistochemistry (Paraffin-embedded Sections)

Image 3. Formalin-fixed and paraffin-embedded human Testis tissue reacted with JMJD2B Antibody (N-term), which was peroxidase-conjugated to the secondary antibody, followed by DAB staining. This data demonstrates the use of this antibody for immunohistochemistry, clinical relevance has not been evaluated.