



[Go to Product page](#)

Datasheet for ABIN653350
anti-EXT2 antibody (AA 182-209)

4 Images

Overview

Quantity:	400 µL
Target:	EXT2
Binding Specificity:	AA 182-209
Reactivity:	Human
Host:	Rabbit
Clonality:	Polyclonal
Conjugate:	This EXT2 antibody is un-conjugated
Application:	Western Blotting (WB), Immunofluorescence (IF), Flow Cytometry (FACS), Immunohistochemistry (Paraffin-embedded Sections) (IHC (p))

Product Details

Immunogen:	This EXT2 antibody is generated from rabbits immunized with a KLH conjugated synthetic peptide between 182-209 amino acids from the Central region of human EXT2.
Clone:	RB23548
Isotype:	Ig Fraction
Predicted Reactivity:	B, M
Purification:	This antibody is purified through a protein A column, followed by peptide affinity purification.

Target Details

Target:	EXT2
---------	------

Target Details

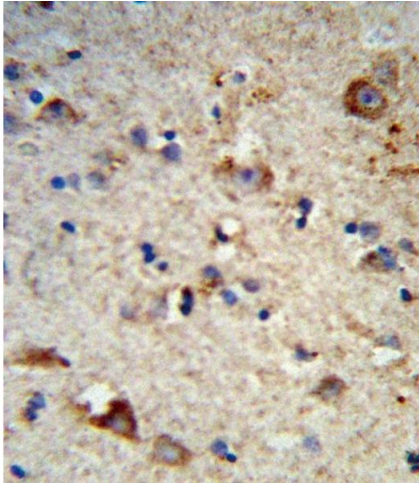
Alternative Name:	EXT2 (EXT2 Products)
Background:	EXT2 encodes one of two glycosyltransferases involved in the chain elongation step of heparan sulfate biosynthesis.
Molecular Weight:	82255
Gene ID:	2132
NCBI Accession:	NP_000392 , NP_001171554 , NP_997005
UniProt:	Q93063
Pathways:	Glycosaminoglycan Metabolic Process

Application Details

Application Notes:	IF: 1:10~50. WB: 1:1000. IHC-P: 1:10~50. FC: 1:10~50
Restrictions:	For Research Use only

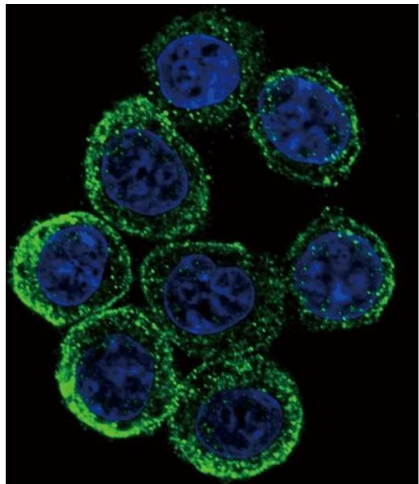
Handling

Format:	Liquid
Buffer:	Purified polyclonal antibody supplied in PBS with 0.09 % (W/V) sodium azide.
Preservative:	Sodium azide
Precaution of Use:	This product contains Sodium azide: a POISONOUS AND HAZARDOUS SUBSTANCE which should be handled by trained staff only.
Storage:	4 °C,-20 °C
Storage Comment:	Maintain refrigerated at 2-8 °C for up to 6 months. For long term storage store at -20 °C in small aliquots to prevent freeze-thaw cycles.
Expiry Date:	6 months



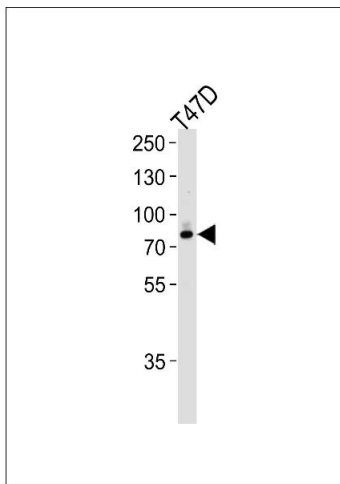
Immunohistochemistry (Paraffin-embedded Sections)

Image 1. Formalin-fixed and paraffin-embedded human brain tissue reacted with EXT2 Antibody (Center), which was peroxidase-conjugated to the secondary antibody, followed by DAB staining. This data demonstrates the use of this antibody for immunohistochemistry, clinical relevance has not been evaluated.



Immunofluorescence

Image 2. Confocal immunofluorescent analysis of EXT2 Antibody (Center) (ABIN653350 and ABIN2842830) with HeLa cell followed by Alexa Fluor 488-conjugated goat anti-rabbit IgG (green). DAPI was used to stain the cell nuclear (blue).



Western Blotting

Image 3. Western blot analysis of lysate from T47D cell line, using EXT2 Antibody (Center) (ABIN653350 and ABIN2842830). (ABIN653350 and ABIN2842830) was diluted at 1:1000 at each lane. A goat anti-rabbit IgG H&L(HRP) at 1:5000 dilution was used as the secondary antibody. Lysate at 35 µg per lane.

Please check the [product details page](#) for more images. Overall 4 images are available for ABIN653350.